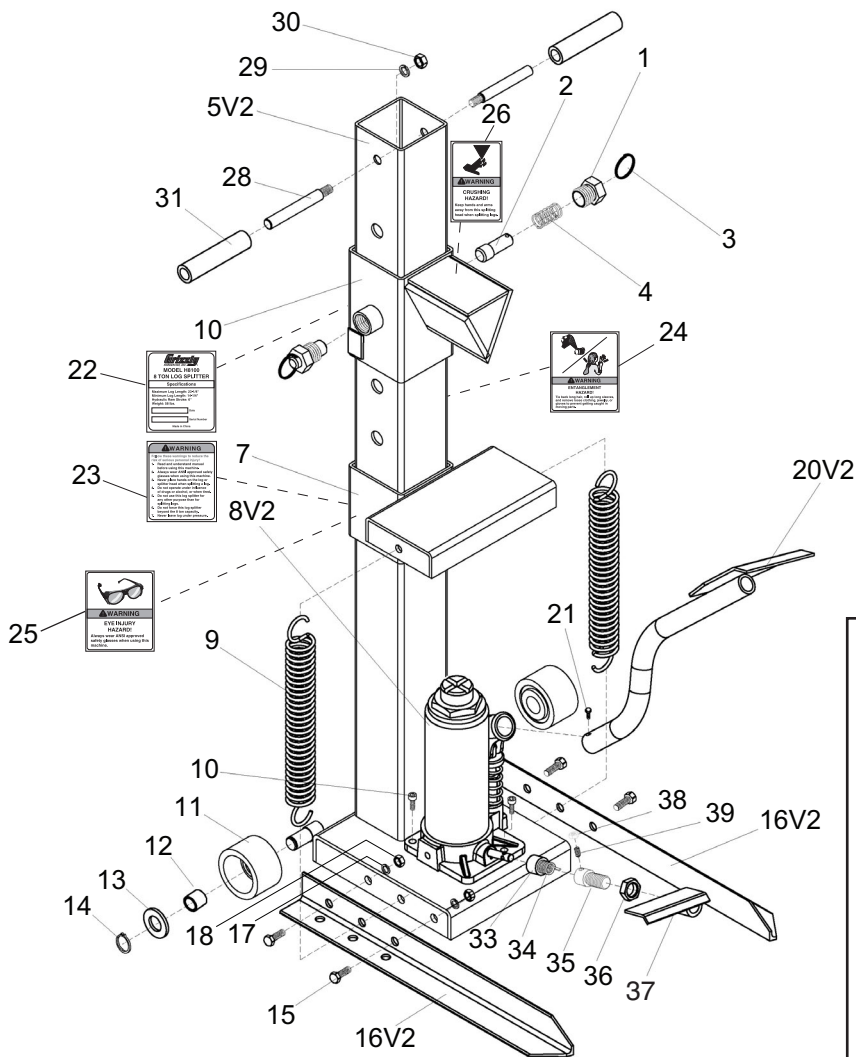


# Parts Breakdown ~ Version 2.05.09



**NOTICE**

Safety labels warn about machine hazards and ways to prevent injury. The owner of this machine **MUST** maintain the original location and readability of the labels on the machine. If any label is removed or becomes unreadable, **REPLACE** that label before using the machine again. Contact Grizzly at (800) 523-4777 or [www.grizzly.com](http://www.grizzly.com) to order new labels.

| REF  | PART #      | DESCRIPTION             |
|------|-------------|-------------------------|
| 1    | PH8100001   | THREADED PIN HOUSING    |
| 2    | PH8100002   | WEDGE RELEASE PIN       |
| 3    | PH8100003   | RING                    |
| 4    | PH8100004   | COMPRESSION SPRING      |
| 5V2  | PH8100005V2 | SPLITTER BODY V2.05.09  |
| 6    | PH8100006   | WEDGE ASSEMBLY          |
| 7    | PH8100007   | SPLITTER WORKBENCH      |
| 8V2  | PH8100008V2 | HYDRAULIC PUMP V2.05.09 |
| 9    | PH8100009   | RETURN SPRING           |
| 10   | PCAP14M     | CAP SCREW M8-1.25 X 20  |
| 11   | PH8100011   | WHEEL                   |
| 12   | PH8100012   | BUSHING                 |
| 13   | PW10M       | FLAT WASHER 14MM        |
| 14   | PR02M       | EXT RETAINING RING 14MM |
| 15   | PB32M       | HEX BOLT M10-1.5 X 25   |
| 16V2 | PH8100016V2 | STABILIZER BAR V2.05.09 |
| 17   | PLW06M      | LOCK WASHER 10MM        |
| 18   | PN02M       | HEX NUT M10-1.5         |

| REF  | PART #      | DESCRIPTION              |
|------|-------------|--------------------------|
| 20V2 | PH8100020V2 | HYD. FOOT PEDAL V2.05.09 |
| 21   | PB83M       | HEX BOLT M6-1 X 16       |
| 22   | PH8100022   | SPECIFICATION LABEL      |
| 23   | PH8100023   | GENERAL WARNINGS LABEL   |
| 24   | PH8100024   | ENTANGLEMENT LABEL       |
| 25   | PH8100025   | EYE INJURY LABEL         |
| 26   | PH8100026   | CRUSHING HAZARD LABEL    |
| 28   | PH8100028   | HANDLE                   |
| 29   | PLW06M      | LOCK WASHER 10MM         |
| 30   | PN02M       | HEX NUT M10-1.5          |
| 31   | PH8100031   | HANDLE SLEEVE            |
| 33   | PH8100033   | TORSION SPRING SLEEVE    |
| 34   | PH8100034   | TORSION SPRING           |
| 35   | PH8100035   | EXTENSION ROD            |
| 36   | PH8100036   | THIN HEX NUT M16         |
| 37   | PH8100037   | RELEASE PEDAL            |
| 38   | PN01M       | HEX NUT M6-1             |
| 39   | PSS04M      | SET SCREW M6-1 X 12      |