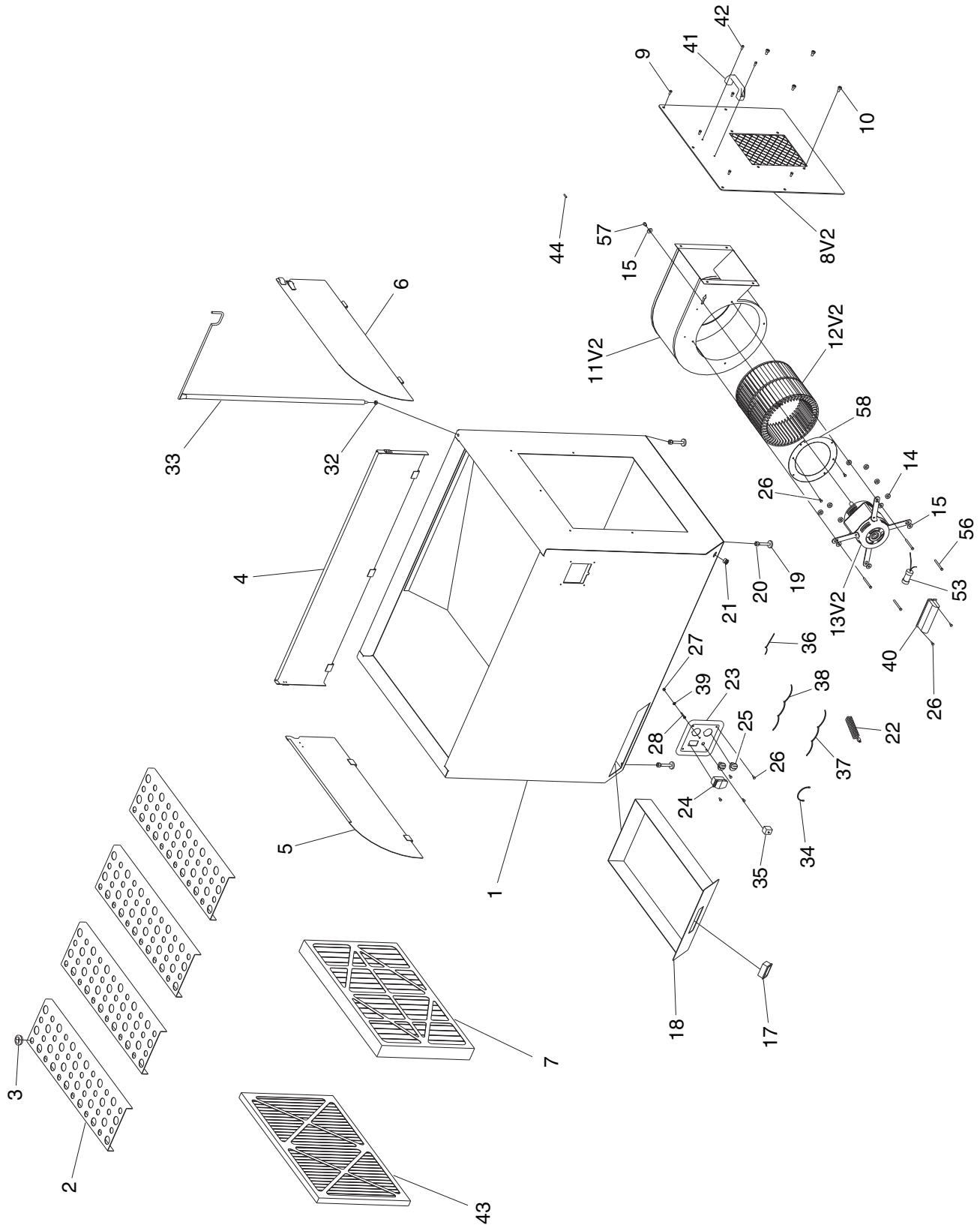


# H2935 Parts Breakdown



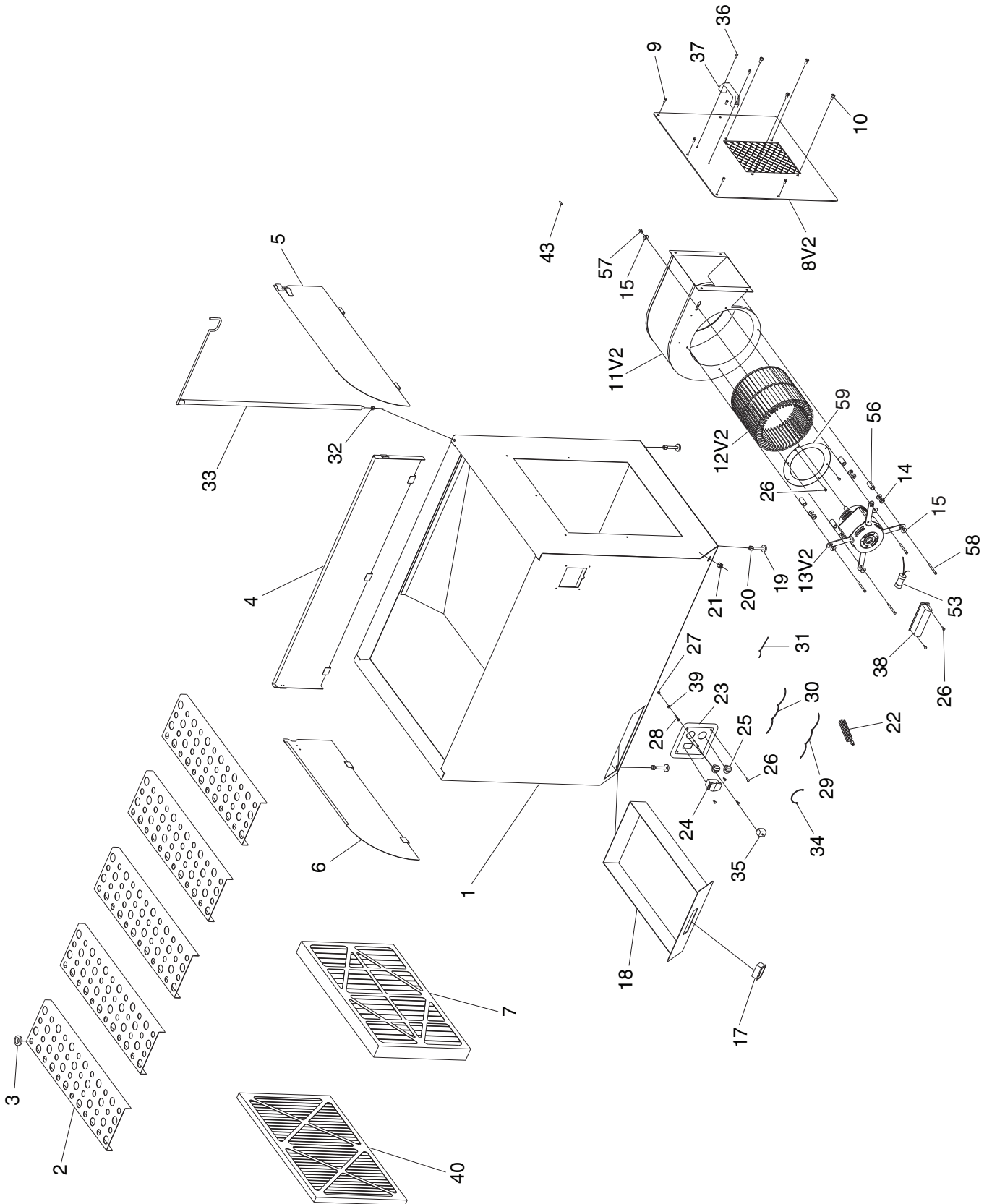
# H2935 Parts List

REF	PART #	DESCRIPTION
1	PH2935001	MAIN BASE
2	PH2935002	DUST COLLECTING PLATE
3	PH2935003	RUBBER GROMMET
4	PH2935004	CENTER PANEL
5	PH2935005	LEFT PANEL
6	PH2935006	RIGHT PANEL
7	PH2935007	FILTER 16" X 20" X 2
8V2	PH2936008V2	OUTLET PLATE V2.04.09
9	PB19	HEX BOLT 1/4-20 X 1/2
10	PCAP04	CAP SCREW 1/4-20 X 1/2
11V2	PH2936011V2	FAN HOUSING V2.04.09
12V2	PH2936012V2	IMPELLER V2.04.09
13V2	PH2935013V2	MOTOR 1/3HP 110V 1PH V2.04.09
14	PH2935014	ANTI-SHAKING RUBBER
15	PW06	FLAT WASHER 1/4
17	PH2935017	HANDLE
18	PH2935018	DRAWER
19	PH2935019	FOOT PAD SCREW 3/8-16 X 2
20	PN08	HEX NUT 3/8-16
21	PH2935021	STRAIN RELIEF
22	PH2935022	POWER CORD
23	PH2935023	SWITCH PLATE

REF	PART #	DESCRIPTION
24	PSW06	PADDLE SWITCH 110/220V W/ KEY
25	PH2935025	SOCKET
26	PS08	PHLP HD SCR 10-24 X 3/4
27	PN07	HEX NUT 10-24
28	PS03	PHLP HD SCR 10-24 X 1
32	PN02	HEX NUT 5/16-18
33	PH2935033	HANGER
34	PH2935034	SHORT CONNECTOR
35	PH2936035	THERMAL RELAY 12A 125V JOEMEX
36	PH2935036	GROUNDING CONNECTOR
37	PH2935037	POWER CORD CONNECTOR
38	PH2935038	POWER CORD CONNECTOR
39	PTLW01	EXT TOOTH WASHER #10
40	PH2935040	CAPACITOR COVER
41	PH2935041	HANDLE
42	PS12	PHLP HD SCR 1/4-20 x 5/8
43	PH2935043	FILTER 16" X 20" X 1"
44	PH2935044	PANEL PIN
53	PH2935053	R CAPACITOR 45MFD 250VAC
56	PB31	HEX BOLT 1/4-20 X 1
57	PCAP68M	CAP SCREW M6-1 X 8
58	PH2936059	INLET COVER



# H2936 Parts Breakdown



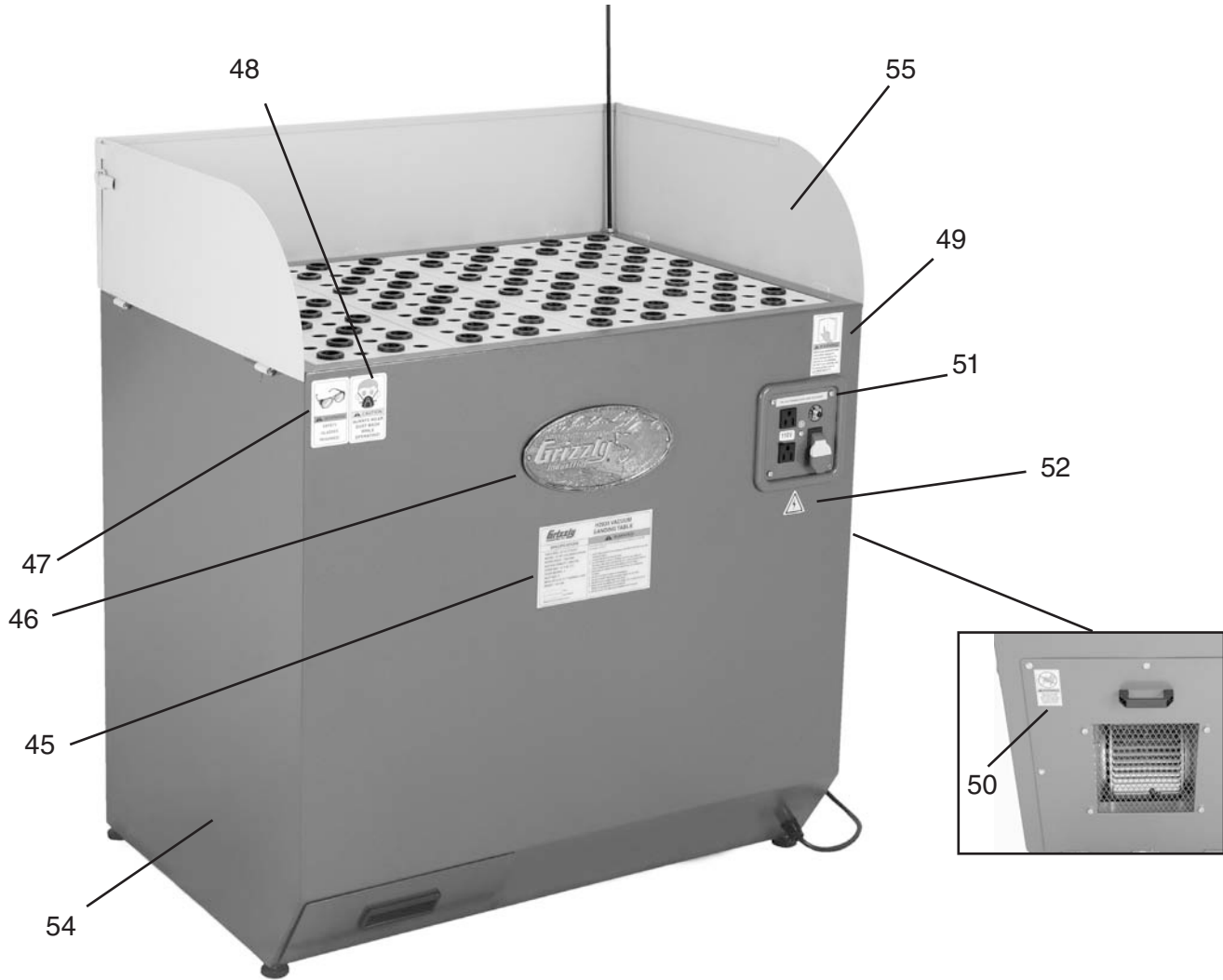
# H2936 Parts List

REF	PART #	DESCRIPTION
1	PH2936001	MAIN BASE
2	PH2936002	DUST COLLECTING PLATE
3	PH2936003	RUBBER GROMMET
4	PH2936004	CENTER PANEL
5	PH2936005	RIGHT PANEL
6	PH2936006	LEFT PANEL
7	PH2936007	FILTER 16"X 25" X 2"
8V2	PH2936008V2	OUTLET PLATE V2.04.09
9	PB19	HEX BOLT 1/4-20 X 1/2
10	PCAP04	CAP SCREW 1/4-20 X 1/2
11V2	PH2936011V2	FAN HOUSING V2.04.09
12A	PH2936012A	PLASTIC IMPELLER 7"X9.5" V2.12.07
12V2	PH2936012V2	IMPELLER V2.04.09
13V2	PH2936013V2	MOTOR 1/2HP 110V 1PH V2.04.09
14	PH2936014	ANTI SHAKING RUBBER
15	PW06	FLAT WASHER 1/4
17	PH2936017	HANDLE
18	PH2936018	DRAWER
19	PH2936019	FOOT PAD SCREW 3/8-16 X 2
20	PN08	HEX NUT 3/8-16
21	PH2936021	STRAIN RELIEF
22	PH2936022	POWER CORD
23	PH2936023	SWITCH PLATE

REF	PART #	DESCRIPTION
24	PSW06	PADDLE SWITCH 110/220V WITH KEY
25	PH2936025	SOCKET
26	PS03	PHLP HD SCR 10-24 X 1
27	PN03	HEX NUT 3/4-16
28	PS03	PHLP HD SCR 10-24 X 1
29	PH2936029	POWER CORD CONNECTOR (W)
30	PH2936030	POWER CORD CONNECTOR (B)
31	PH2936031	GROUNDING CONNECTOR
32	PN02	HEX NUT 5/16-18
33	PH2936033	HANGER
34	PH2936034	CONNECTOR-SHORT
35	PH2936035	THERMAL RELAY 12A 125V JOEMEX
36	PS12	PHLP HD SCR 1/4-20 x 5/8
37	PH2936037	HANDLE
38	PH2936038	CAPACITOR COVER
39	PTLW01	EXT TOOTH WASHER #10
40	PH2936040	FILTER 16" x 25" x 1"
43	PH2936043	PANEL PIN
53	PH2936053	CAPACITOR 50MFD 250VAC
56	PH2936056	PLASTIC SPACER
57	PH2936057	CAP SCREW M6-1 X 8
58	PH2936058	HEX BOLT 1/4-20 X 1-3/4
59	PH2936059	INLET COVER



# Safety Label Placement and Parts List



REF	PART #	DESCRIPTION
45	PH2935045	MACHINE ID LABEL (H2935)
45	PH2936045	MACHINE ID LABEL (H2936)
46	G8588	GRIZZLY NAMEPLATE-SMALL
47	PLABEL-11	SAFETY GLASSES LABEL
48	PLABEL-32A	DUST MASK LABEL-NS
49	PLABEL-12A	READ MANUAL LABEL

REF	PART #	DESCRIPTION
50	PH2936050	NO HANDS IN OUTLET
51	PH2935051	MAX AMPS LABEL 3.5A (H2935)
51	PH2936051	MAX AMPS LABEL 5A (H2936)
52	PLABEL-14	ELECTRICITY LABEL
54	PPAINT-1	PAINT-GRIZZLY GREEN
55	PPAINT-11	PUTTY TOUCH UP PAINT

## **!WARNING**

Safety labels warn about machine hazards and ways to prevent injury. The owner of this machine **MUST** maintain the original location and readability of the labels on the machine. If any label is removed or becomes unreadable, **REPLACE** that label before using the machine again. Contact Grizzly at (800) 523-4777 or [www.grizzly.com](http://www.grizzly.com) to order new labels.

