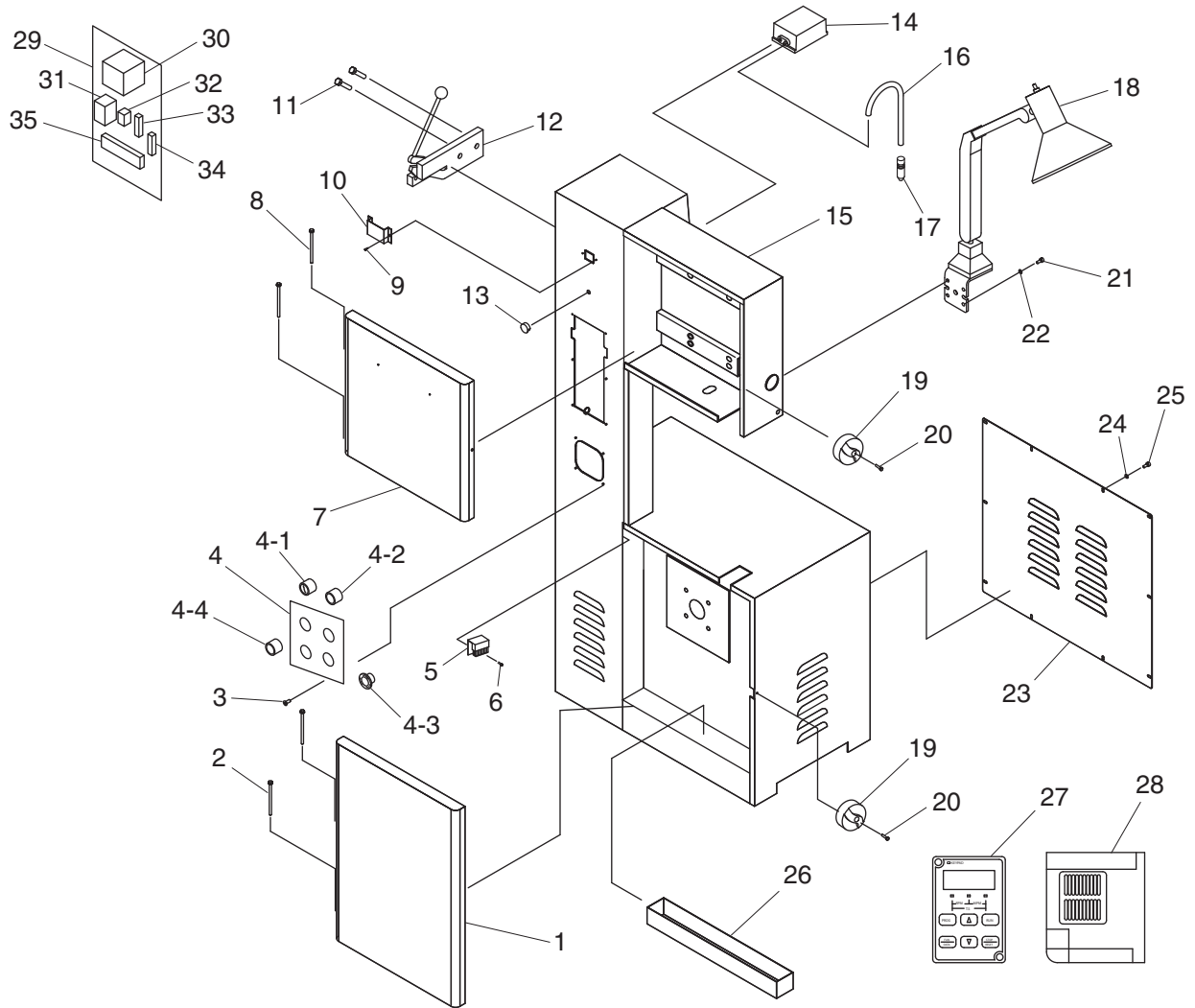


G8146Z Cabinet Breakdown & Parts List

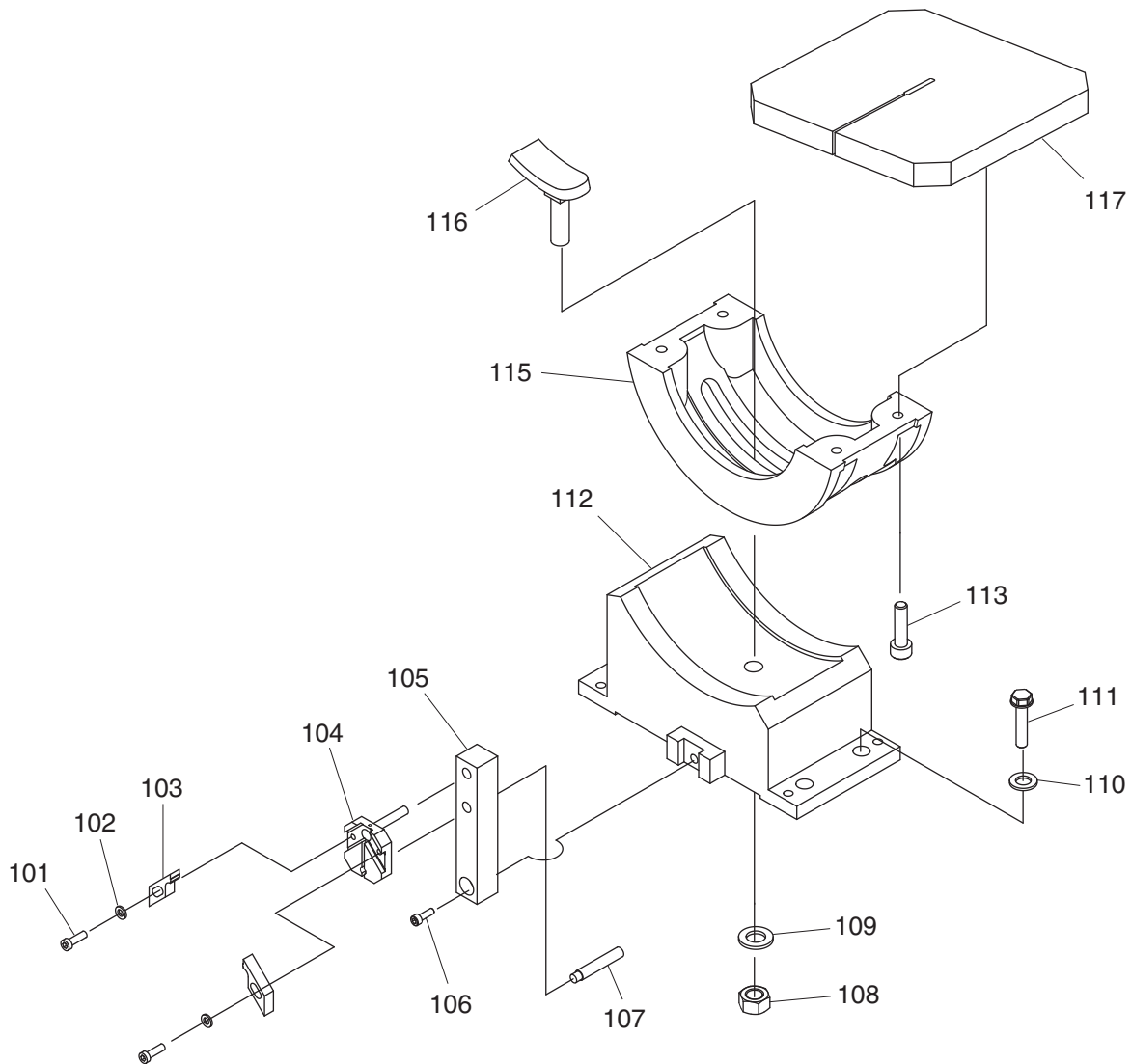


REF	PART #	DESCRIPTION
1	P8146Z001	WHEEL DOOR LOWER
2	P8144Z002	HINGE PIN LOWER
3	PS05M	PHLP HD SCR M5-.8 X 8
4	P8146Z004	CONTROL PANEL
4-1	P8146Z004-1	POWER SWITCH W/KEY
4-2	P8146Z004-2	POWER LAMP
4-3	P8146Z004-3	EMERGENCY STOP BUTTON
4-4	P8146Z004-4	MOTOR ON BUTTON
5	P8144Z005	BLADE CLEANING BRUSH
6	PS22M	PHLP HD SCR M5-.8 X 25
7	P8146Z007	WHEEL DOOR UPPER
8	P8144Z002	HINGE PIN UPPER
9	PS05M	PHLP HD SCR M5-.8 X 8
10	P8144Z010	DIGITAL DISPLAY BRACKET
11	PSB11M	CAP SCREW M8-1.25 X 16
12	P8144Z012	BLADE SHEAR
13	P8144Z013	VARIABLE SPEED DIAL
14	P8144Z014	AIR PUMP
15	P8146Z015	BANDSAW CABINET
16	P8144Z016	AIR HOSE 4X6MM

REF	PART #	DESCRIPTION
17	P8144Z017	AIR NOZZLE
18	P8146Z018	WORK LAMP 220V
19	P8144Z019	DOOR KNOB
20	PS47M	PHLP HD SCR M6-1 X 25
21	PSB28M	CAP SCREW M6-1 X 15
22	PW03M	FLAT WASHER 6MM
23	P8146Z023	MOTOR ACCESS PANEL
24	PW03M	FLAT WASHER 6MM
25	PS68M	PHLP HD SCR M6-1 X 10
26	P8146Z026	CHIP PAN
27	P8144Z027	DIGITAL DISPLAY
28	P8146Z028	INVERTER RM5G 2HP 220V 3PH
29	P8146Z029	CONTROL PANEL
30	P8146Z030	TRANSFORMER 1PH 0-3VA
31	P8146Z031	CONTACTOR NHD C-12D 24V
32	P8146Z032	OL RELAY ARITA MR4P 24V 3-5A
33	P8146Z033	FUSE HOLDER
34	P8146Z034	FUSE 3A
35	P8146Z035	WIRING BLOCK 10-POST



G8146Z Table & Lower Guide Breakdown & Parts List

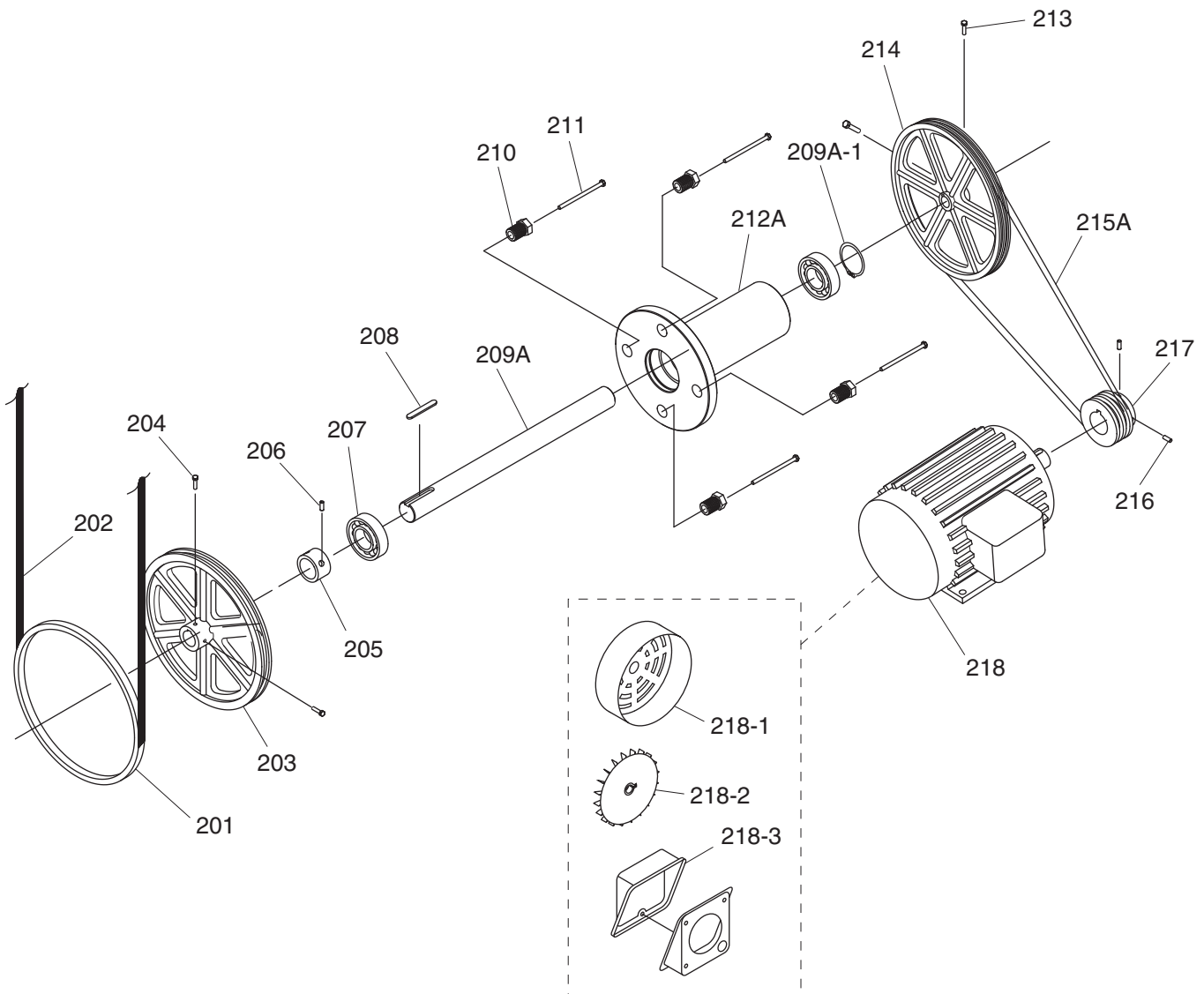


REF	PART #	DESCRIPTION
101	PSB15M	CAP SCREW M5-.8 X 20
102	PLW02M	LOCK WASHER 5MM
103	P8144Z103	BLADE GUIDE
104	P8144Z104	BLADE GUIDE BRACKET LOWER
105	P8146Z105	GUIDE POST LOWER
106	PSB06M	CAP SCREW M6-1 X 25
107	P8144Z107	BLADE SUPPORT
108	PN04	HEX NUT 5/8-11

REF	PART #	DESCRIPTION
109	PLW06	LOCK WASHER 5/8
110	PW01M	FLAT WASHER 8MM
111	PSB14M	CAP SCREW M8-1.25 X 20
112	P8146Z112	TRUNNION BASE
113	PSB14M	CAP SCREW M8-1.25 X 20
115	P8146Z115	TRUNNION
116	P8144Z116	TABLE TILT LOCK 5/8-11 X 2
117	P8146Z117	TABLE



G8146Z Motor & Lower Wheel Breakdown & Parts List

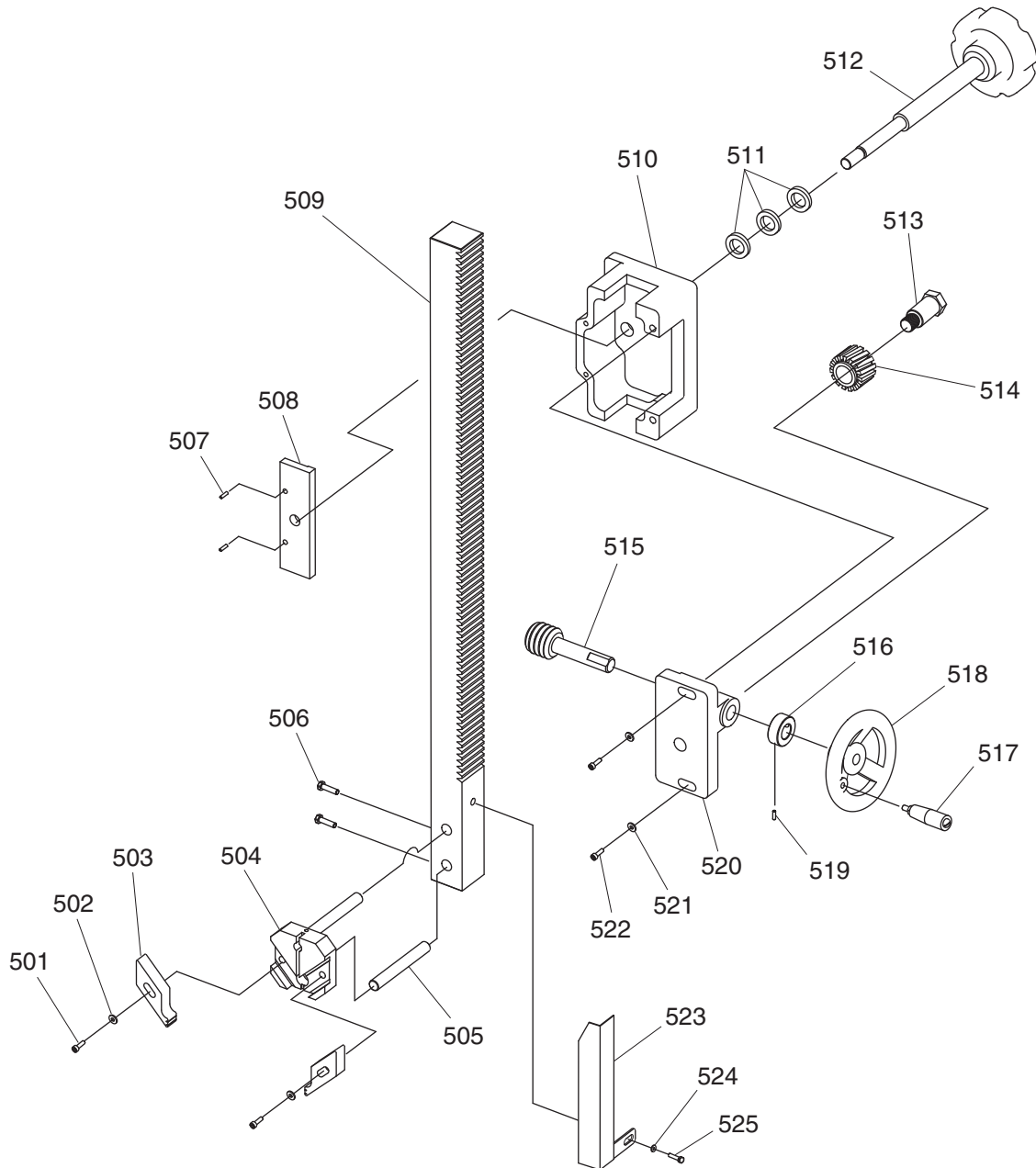


REF	PART #	DESCRIPTION
201	P8146Z201	WHEEL TIRE
202	P8146Z202	BANDSAW BLADE 3/8"W STANDARD
203	P8146Z203	WHEEL LOWER
204	PB170M	HEX BOLT M10-1.5 X 10
205	P8146Z205	COLLAR
206	PSS20M	SET SCREW M8-1.25 X 8
207	P6206	BALL BEARING 6206ZZ
208	PK107M	KEY 8 X 8 X 20
209A	P8146Z209A	LOWER WHEEL SHAFT V2.04.08
209A-1	PR15M	EXT RETAINING RING 30MM
210	P8146Z210	SPECIAL SCREW 3/4-16

REF	PART #	DESCRIPTION
211	PB73M	HEX BOLT M10-1.5 X 50
212A	P8146Z212A	BEARING HOUSING V2.04.08
213	PB25M	HEX BOLT M12-1.75 X 25
214	P8146Z214	WHEEL PULLEY
215A	PVA62	V-BELT A-62 4L620
216	PSS16M	SET SCREW M8-1.25 X 10
217	P8146Z217	MOTOR PULLEY
218	P8146Z218	MOTOR 2HP 220V 3PH
218-1	P8146Z218-1	MOTOR FAN COVER
218-2	P8146Z218-2	MOTOR FAN
218-3	P8146Z218-3	MOTOR WIRING JUNCTION BOX



G8146Z Guide Post Breakdown & Parts List

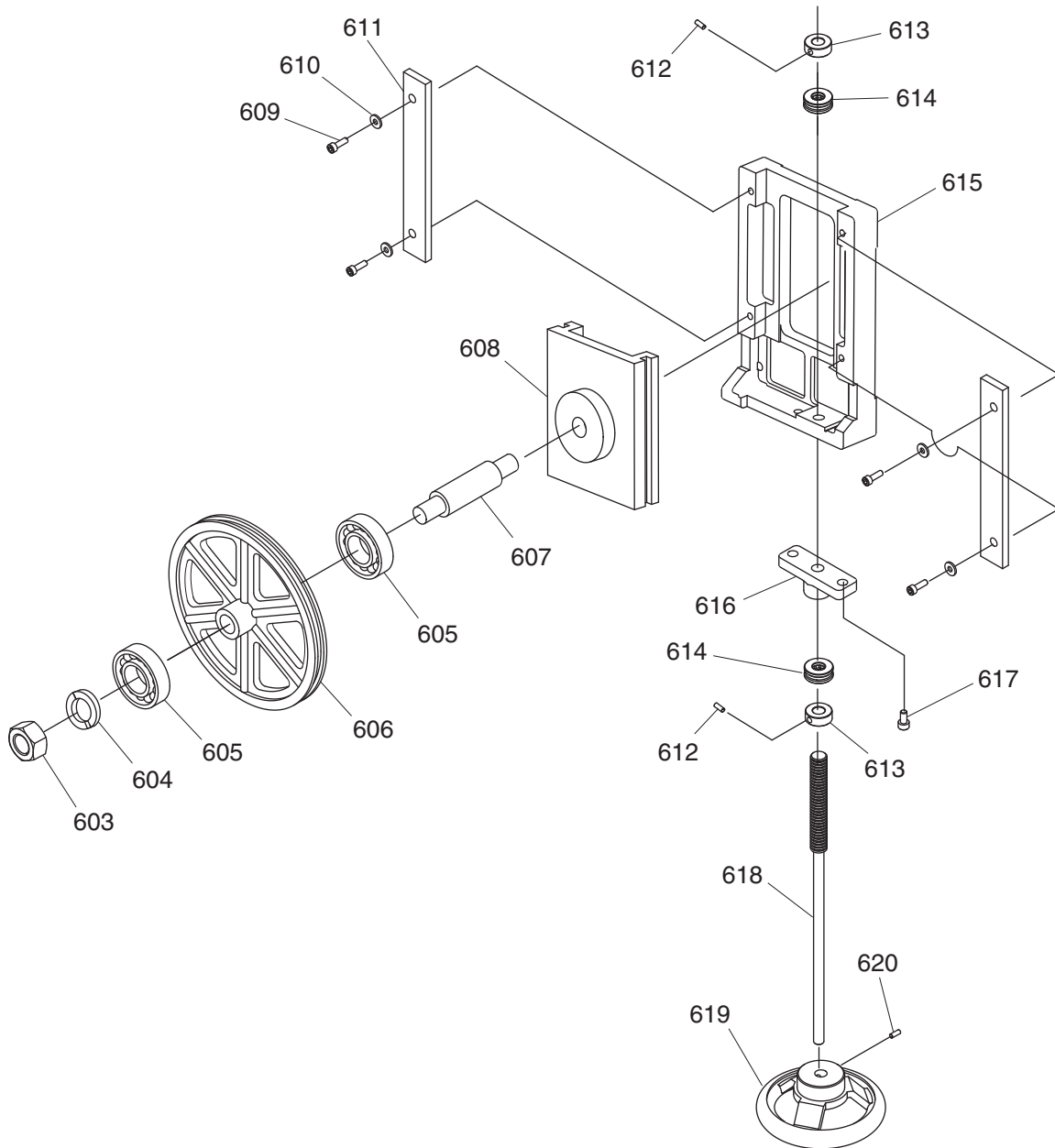


REF	PART #	DESCRIPTION
501	PSB15M	CAP SCREW M5-.8 X 20
502	PW02M	FLAT WASHER 5MM
503	P8144Z503	BLADE GUIDE
504	P8144Z504	BLADE GUIDE BRACKET UPPER
505	P8144Z505	BLADE SUPPORT
506	PSB02M	CAP SCREW M6-1 X 20
507	PRP102M	ROLL PIN 4 X 36
508	P8146Z508	GUIDE POST CLAMP PLATE
509	P8146Z509	GUIDE POST RACK
510	P8146Z510	GUIDE POST BRACKET
511	P8146Z511	SPECIAL FLAT WASHER 13 X 35 X T2
512	P8146Z512	LOCK KNOB 7/16-14 X 7/8
513	P8146Z513	SPECIAL SCREW 1/2-12 X 9/16

REF	PART #	DESCRIPTION
514	P8146Z514	GUIDE POST PINION GEAR 15T OD 32MM
515	P8146Z515	WORM GEAR P6.2832 OD 27MM
516	P8146Z516	COLLAR
517	P8146Z517	HANDWHEEL HANDLE
518	P8146Z518	HANDWHEEL
519	PSS02M	SET SCREW M6-1 X 6
520	P8146Z520	BRACKET
521	PLW03M	LOCK WASHER 6MM
522	PSB02M	CAP SCREW M6-1 X 20
523	P8146Z523	BLADE GUARD
524	PW04M	FLAT WASHER 10MM
525	PSB146M	CAP SCREW M10-1.5 X 15



G8146Z Upper Wheel Breakdown & Parts List

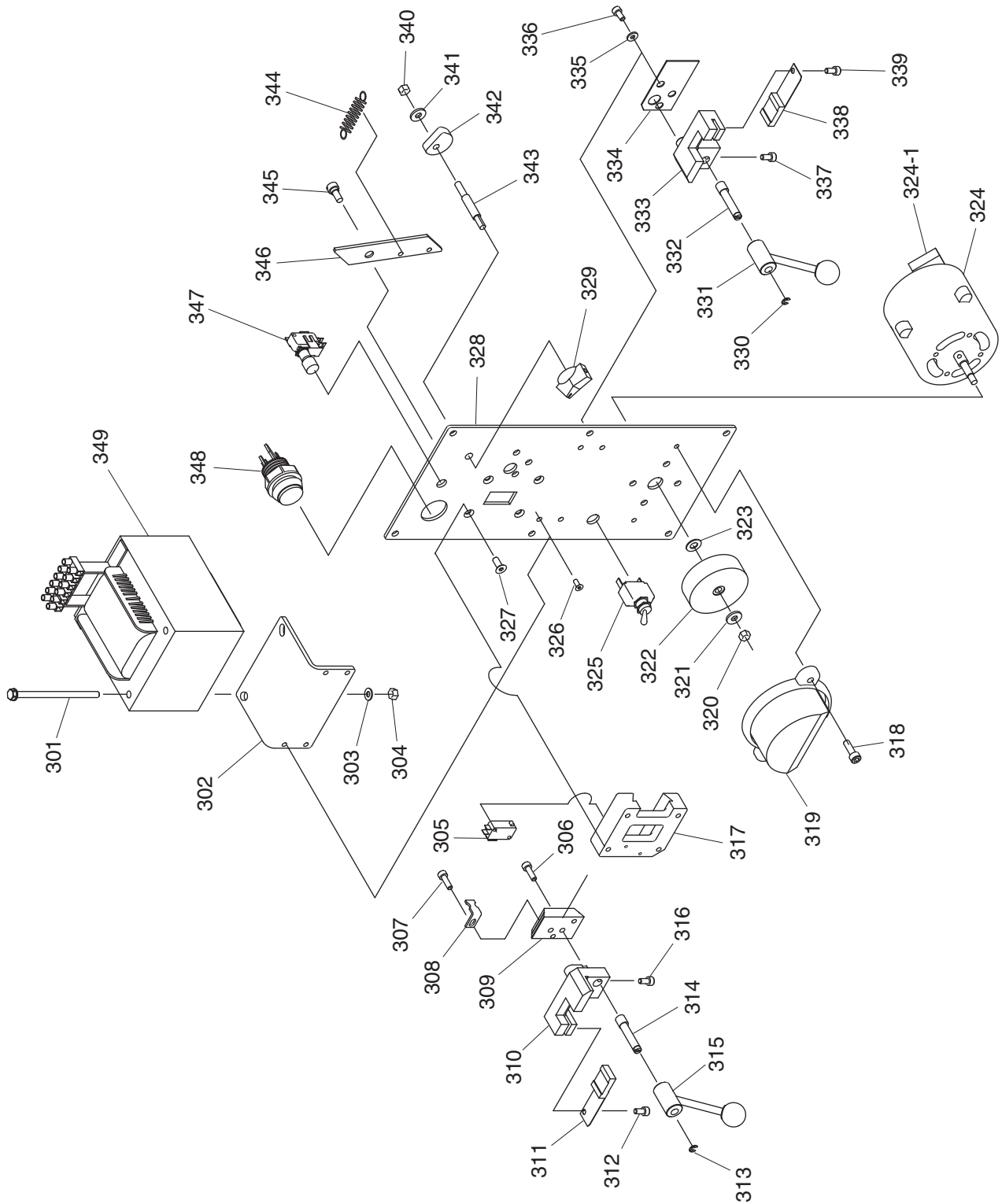


REF	PART #	DESCRIPTION
603	PN09	HEX NUT 5/8-18
604	PLW06	LOCK WASHER 5/8
605	P6304	BALL BEARING 6304ZZ
606	P8146Z606	WHEEL UPPER
607	P8146Z607	UPPER WHEEL SHAFT
608	P8146Z608	SLIDING BLOCK
609	PB07M	HEX BOLT M8-1.25 X 25
610	PLW04M	LOCK WASHER 8MM
611	P8146Z611	LOCK PLATE

REF	PART #	DESCRIPTION
612	PSS02M	SET SCREW M6-1 X 6
613	P8146Z613	COLLAR
614	P2901	THRUST BEARING 2901
615	P8146Z615	TENSIONING WAY
616	P8146Z616	LEADSCREW BRACKET
617	PSB31M	CAP SCREW M8-1.25 X 25
618	P8146Z618	LEADSCREW 5/8-18 X 11-13/16
619	P8146Z619	HANDWHEEL
620	PSS16M	SET SCREW M8-1.25 X 10



Welder Station Breakdown



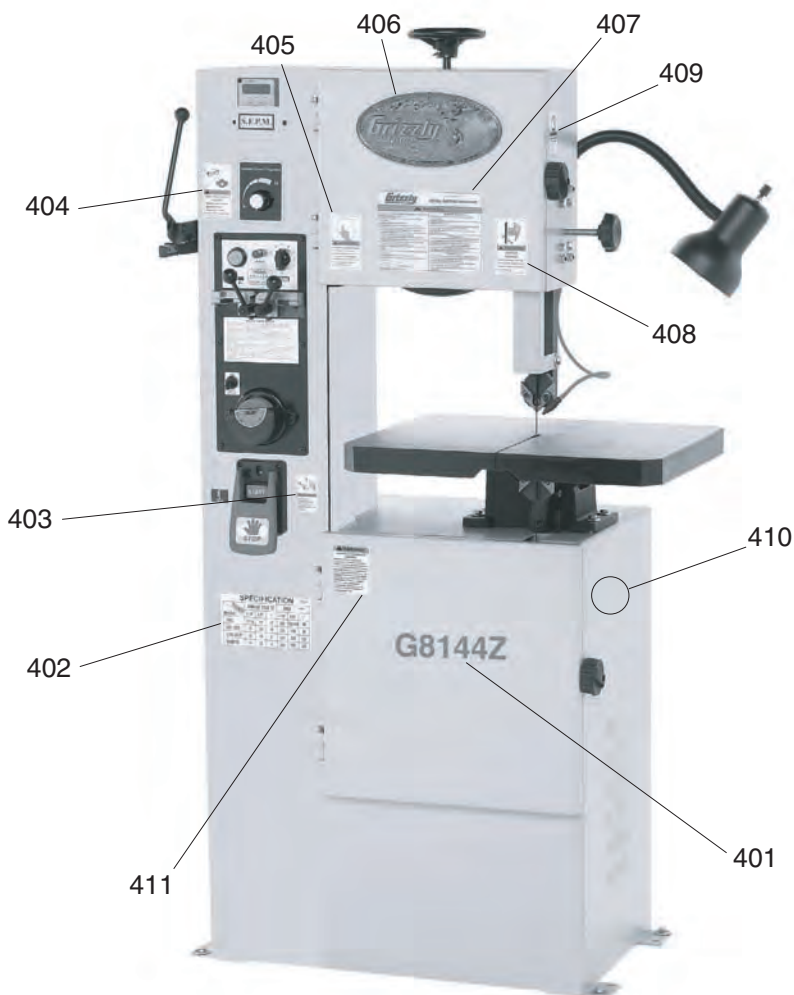
Welder Station Parts List

REF	PART #	DESCRIPTION
301	PB96	HEX BOLT 1/4-20 X 4
302	P8144Z302	TRANSFORMER BRACKET
303	PW06	FLAT WASHER 1/4
304	PN05	HEX NUT 1/4-20
305	P8144Z305	LIMIT SWITCH
306	PSB06M	CAP SCREW M6-1 X 25
307	PSB04M	CAP SCREW M6-1 X 10
308	P8144Z308	LIMIT SWITCH BRACKET
309	P8144Z309	SLIDING BLOCK
310	P8144Z310	WELDING CLAMP LEFT
311	P8144Z311	WELDING JAW LEFT
312	PSB26M	CAP SCREW M6-1 X 12
313	PEC02M	E-CLIP 4MM
314	P8144Z314	SHAFT
315	P8144Z315	CLAMP LEVER
316	PSB26M	CAP SCREW M6-1 X 12
317	P8144Z317	SLIDING BLOCK BASE
318	PS11M	PHLP HD SCR M6-1 X 16
319	P8144Z319	GRINDER COVER
320	PN01M	HEX NUT M6-1
321	PW03M	FLAT WASHER 6MM
322	P8144Z322	GRINDING WHEEL 2-1/2"D
323	PW03M	FLAT WASHER 6MM
324	P8144Z324	GRINDER MOTOR 1/8HP 220V 1PH
324-1	P8144Z324-1	S CAPACITOR 3M 250V 3/4 X 1-1/4
325	P8144Z325	ON/OFF SWITCH

REF	PART #	DESCRIPTION
326	PS11M	PHLP HD SCR M6-1 X 16
327	PS26M	PHLP HD SCR M6-1 X 20
328	P8144Z328	WELDING PANEL
329	P8144Z329	CLAMP PRESSURE KNOB
330	PEC02M	E-CLIP 4MM
331	P8144Z331	CLAMP LEVER
332	P8144Z332	SHAFT
333	P8144Z333	WELDING CLAMP RIGHT
334	P8144Z334	INSULATING PLATE
335	PW03M	FLAT WASHER 6MM
336	PSB02M	CAP SCREW M6-1 X 20
337	PSB02M	CAP SCREW M6-1 X 20
338	P8144Z338	WELDING JAW RIGHT
339	PSB02M	CAP SCREW M6-1 X 20
340	PN01M	HEX NUT M6-1
341	PW03M	FLAT WASHER 6MM
342	P8144Z342	PRESSURE CAM
343	P8144Z343	CAM SHAFT
344	P8144Z344	TENSION SPRING 0.8 X 25MM
345	PS04	PHLP HD SCR 1/4-20 X 1/2
346	P8144Z346	BRACKET
347	P8144Z347	ANNEALING PUSH BUTTON
348	P8144Z348	WELDING PUSH BUTTON
349	P8144Z349	TRANSFORMER 1.2KVA 220V (G8144Z)
349	P8145Z349	TRANSFORMER 2KVA 220V (G8145Z)
349	P8146Z349	TRANSFORMER 4.2KVA 220V (G8146Z)



Label Placement & List



REF	PART #	DESCRIPTION
401	P8144Z401	MODEL # LABEL (G8144Z)
401	P8145Z401	MODEL # LABEL (G8145Z)
401	P8146Z401	MODEL # LABEL (G8146Z)
402	P8144Z402	BLADE SPECIFICATION LABEL
403	P8144Z403	POWER DISCONNECT LABEL VERT S
404	P8144Z404	EYE/LUNG HAZARD LABEL VERT L
405	P8144Z405	READ MANUAL LABEL VERT L
406	G8588	GRIZZLY NAMEPLATE 9-1/2" X 4-1/2"

REF	PART #	DESCRIPTION
407	P8144Z407	MACHINE ID LABEL (G8144Z)
407	P8145Z407	MACHINE ID LABEL (G8145Z)
407	P8146Z407	MACHINE ID LABEL (G8146Z)
408	P8144Z408	BLADE HAZARD LABEL VERT L
409	P8144Z409	DOOR INJURY HAZARD LABEL VERT S
410	PPAINT-11	GRIZZLY PUTTY TOUCH UP PAINT
411	P8144Z411	UNSTABLE WORKPIECE LABEL

WARNING

Safety labels warn about machine hazards and ways to prevent injury. The owner of this machine **MUST** maintain the original location and readability of the labels on the machine. If any label is removed or becomes unreadable, **REPLACE** that label before using the machine again. Contact Grizzly at (800) 523-4777 or www.grizzly.com to order new labels.

