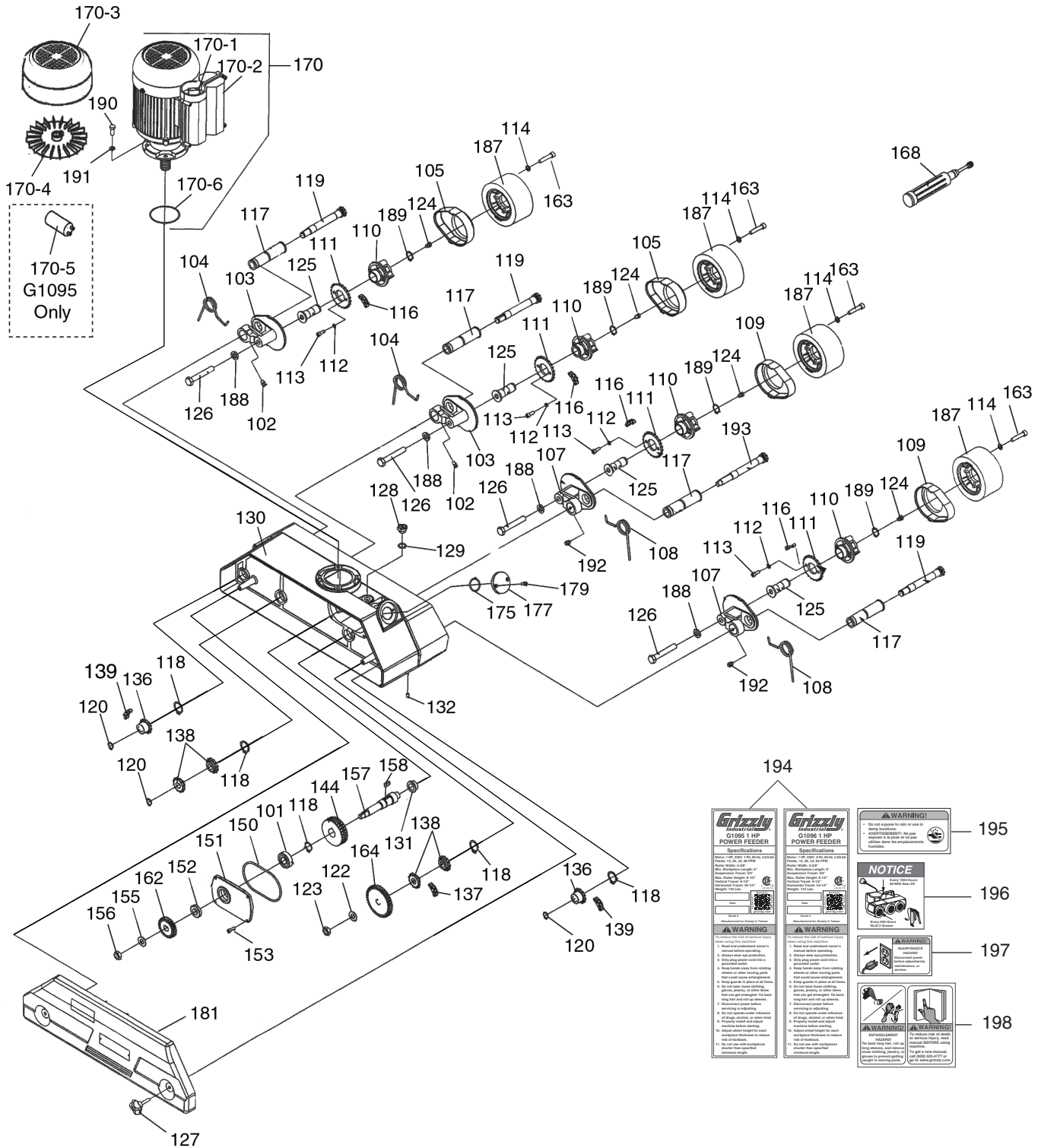


SECTION 9: PARTS

We do our best to stock replacement parts when possible, but we cannot guarantee that all parts shown are available for purchase. Call (800) 523-4777 or visit www.grizzly.com/parts to check for availability.

Main Breakdown



194

<p>Grizzly C189 1 HP POWER FEEDER</p> <p>Specifications</p> <p>Model: C189 Part No. 30-30-1794 Max. Amps: 15.0 A Max. Voltage: 120 V Max. Power: 1.2 HP Max. Speed: 1725 RPM Max. Torque: 1.2 LBS-FT Max. Weight: 15.0 LBS</p>	<p>Grizzly C189 1 HP POWER FEEDER</p> <p>Specifications</p> <p>Model: C189 Part No. 30-30-1794 Max. Amps: 15.0 A Max. Voltage: 120 V Max. Power: 1.2 HP Max. Speed: 1725 RPM Max. Torque: 1.2 LBS-FT Max. Weight: 15.0 LBS</p>	<p>WARNING!</p> <p>Do not operate the unit or use it in any way that is not intended. Always use proper safety practices and read the manual for the proper use of the power feeder and its components.</p>	<p>195</p>
<p>WARNING!</p> <p>Do not use the power feeder to cut or grind any material that is not intended for the power feeder. Always use proper safety practices and read the manual for the proper use of the power feeder and its components.</p>	<p>NOTICE</p> <p>Always use proper safety practices and read the manual for the proper use of the power feeder and its components.</p>	<p>196</p>	
<p>WARNING!</p> <p>Do not use the power feeder to cut or grind any material that is not intended for the power feeder. Always use proper safety practices and read the manual for the proper use of the power feeder and its components.</p>	<p>WARNING!</p> <p>Do not use the power feeder to cut or grind any material that is not intended for the power feeder. Always use proper safety practices and read the manual for the proper use of the power feeder and its components.</p>	<p>197</p>	
<p>WARNING!</p> <p>Do not use the power feeder to cut or grind any material that is not intended for the power feeder. Always use proper safety practices and read the manual for the proper use of the power feeder and its components.</p>	<p>WARNING!</p> <p>Do not use the power feeder to cut or grind any material that is not intended for the power feeder. Always use proper safety practices and read the manual for the proper use of the power feeder and its components.</p>	<p>198</p>	



Main Parts List

REF	PART #	DESCRIPTION
101	P1096101	BALL BEARING 6203-2RS
102	P1096102	GREASE FITTING M6 X 1.0
103	P1096103	SPROCKET CASE
104	P1096104	TORSION SPRING 3.8 X 102
105	P1096105	CASE COVER
107	P1096107	SPROCKET CASE
108	P1096108	TORSION SPRING 3.8 X 102
109	P1096109	CASE COVER
110	P1096110	ROLLER SUPPORT
111	P1096111	SPROCKET
112	P1096112	LOCK WASHER 6MM
113	P1096113	CAP SCREW M6-1 X 16
114	P1096114	LOCK WASHER 8MM
116	P1096116	CHAIN 26S
117	P1096117	TUBE 27 X 19 X 103L
118	P1096118	EXT RETAINING RING 24MM
119	P1096119	SPROCKET SHAFT
120	P1096120	EXT RETAINING RING 13MM
122	P1096122	FLAT WASHER 1/2
123	P1096123	HEX NUT M12-1.75
124	P1096124	GREASE FITTING M6-1.0P X 1
125	P1096125	ROLLER SPINDLE
126	P1096126	SPRCKT CASE HEX BOLT M12-1.75 X 75
127	P1096127	KNOB M6-1 X 301
128	P1096128	OIL CAP 16MM
129	P1096129	O-RING 14.8 X 2.4 P15
130	P1096130	CASTING
131	P1096131	BUSHING 29D X 23D
132	P1096132	SET SCREW M6-1 X 10
136	P1096136	SPROCKET 12T X 3/8"
137	P1096137	CHAIN 62S
138	P1096138	DOUBLE SPROCKET 12T
139	P1096139	CHAIN 40S
144	P1096144	WORM GEAR BRASS 36T

REF	PART #	DESCRIPTION
150	P1096150	WORM GR BX CVR O-RING 101.19 X 3.53
151	P1096151	WORM GEAR BOX COVER
152	P1096152	OIL SEAL 17 X 32 X 7T
153	P1096153	CAP SCREW M5-.8 X 16
155	P1096155	FLAT WASHER 1/2
156	P1096156	HEX NUT M12-1.75
157	P1096157	WORM GEAR SHAFT
158	P1096158	WORM GEAR SHAFT KEY 6 X 6 X 18L
162	P1096162	GEAR 25T
163	P1096163	CAP SCREW M8-1.25 X 40
164	P1096164	GEAR 40T
168	P1096168	LUBRICATOR
170	P1095170	MOTOR 1HP 220V 1-PH (G1095)
170	P1096170	MOTOR 1HP 220V 3-PH 25PD (G1096)
170-1	P1096170-1	SWITCH W/ELECTRICAL BOX
170-2	P1096170-2	BOX COVER
170-3	P1096170-3	FAN COVER
170-4	P1095170-4	MOTOR FAN (G1095)
170-4	P1096170-4	MOTOR FAN (G1096)
170-5	P1095107-5	R CAPACITOR 35M 250V 1-1/2 X 2-3/4 (G1095)
170-6	P1096170-6	SEALING RING 30 X 52 X 11T
175	P1096175	O-RING 27.5 X 2.0 S28
177	P1096177	CAP
179	P1096179	CAP SCREW M5-.8 X 10
181	P1096181	BACK COVER
187	P1096187	FLANGE WHEEL W/ RUBBER ROLLER TIRE
188	P1096188	LOCK WASHER 12MM
189	P1096189	EXT RETAINING RING 20MM
190	P1096190	HEX BOLT M8-1.25 X 20
191	P1096191	LOCK WASHER 8MM
192	P1095192	GREASE FITTING M6 - 1 STRAIGHT (G1095)
192	P1096192	GREASE FITTING M6 X 1.0 (G1096)
193	P1096193	SPROCKET SHAFT

NOTICE

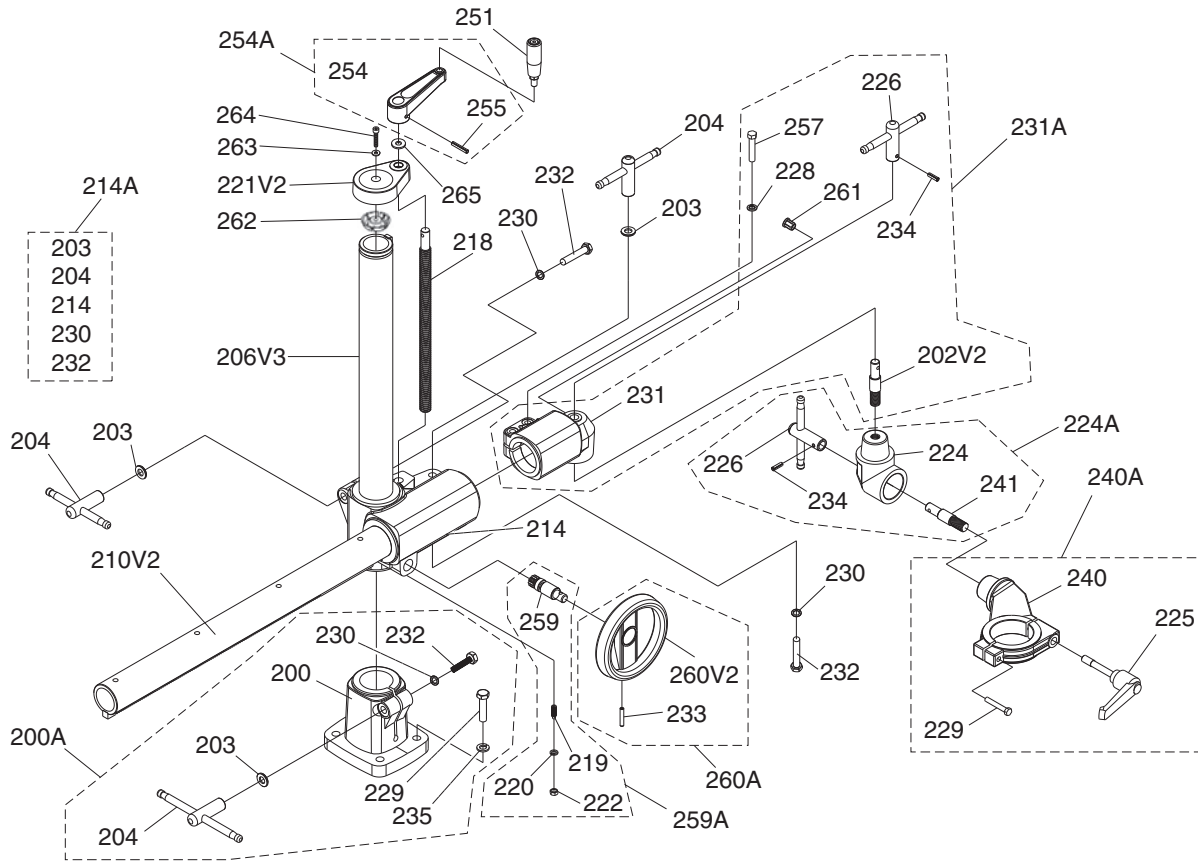
We do our best to stock replacement parts when possible, but we cannot guarantee that all parts shown are available for purchase. Call (800) 523-4777 or visit www.grizzly.com/parts to check for availability.

WARNING

Safety labels help reduce the risk of serious injury caused by machine hazards. If any label comes off or becomes unreadable, the owner of this machine **MUST** replace it in the original location before resuming operations. For replacements, contact (800) 523-4777 or www.grizzly.com.



Base Breakdown



Base Parts List

REF	PART #	DESCRIPTION
200A	P1096200A	COLUMN BASE ASSEMBLY
200	P1096200	COLUMN BASE
202V2	P1096202V2	STANDOFF-HEX V2.12.13
203	P1096203	FLAT WASHER 12MM
204	P1096204	T-HANDLE W/THREADS
206V2	P1096206V2	VERTICAL COLUMN 560MM V2.12.13
210V2	P1096210V2	OVER ARM 720MM V2.12.13
214A	P1096214A	ELEVATION BRACKET ASSEMBLY
214	P1096214	ELEVATION BRACKET
218	P1096218	ELEVATION SCREW M19-4 X 380
219	P1096219	SET SCREW M8-1.25 X 20
220	P1096220	LOCK WASHER 8MM
221A	P1096221A	COLUMN CAP ASSEMBLY
221	P1096221	COLUMN CAP
222	P1096222	HEX NUT M8-1.25
224A	P1096224A	SWIVEL CONE ASSEMBLY
224	P1096224	SWIVEL CONE
225	P1096225	ADJUSTABLE HANDLE M6-1 X 36
226	P1096226	T-HANDLE W/HOLE FOR PIN
228	P1096228	FLAT WASHER 10MM
229	P1096229	HEX BOLT M8-1.25 X 50
230	P1096230	INT TOOTH WASHER 12MM

REF	PART #	DESCRIPTION
231A	P1096231A	OVER ARM CONE ASSEMBLY
231	P1096231	OVER ARM CONE
232	P1095232	HEX BOLT M12-1.75 X 75 (G1095)
232	P1096232	HEX BOLT M12-1.75 X 75 (G1096)
233	P1096233	ROLL PIN 6 x 36
234	P1096234	ROLL PIN 6 X 22
235	P1096235	LOCK WASHER 12MM
240A	P1096240A	MOTOR CLAMP ASSEMBLY
240	P1096240	MOTOR CLAMP
241	P1096241	MOTOR CLAMP CONNECTOR
251	P1096251	HANDLE M10-1.5 X 70
252	P1096252	SET SCREW M8-1.25 X 12 CONE-PT
254A	P1096254A	CRANK ASSEMBLY
254	P1096254	CRANK
255	P1096255	ROLL PIN 6 x 36
257	P1096257	HEX BOLT M10-1.5 X 50
259A	P1096259A	PINION ASSEMBLY
259	P1096259	PINION
260A	P1096260A	HANDWHEEL ASSEMBLY
260V2	P1096260V2	HANDWHEEL W/O HANDLE V2.12.13
261	P1096261	STRAIN RELIEF

