



Model G1037Z

IMPORTANT UPDATE

Applies to Models Mfd. Since 07/25
and Owner's Manual Revised 04/18

The following changes were recently made since the owner's manual was printed:

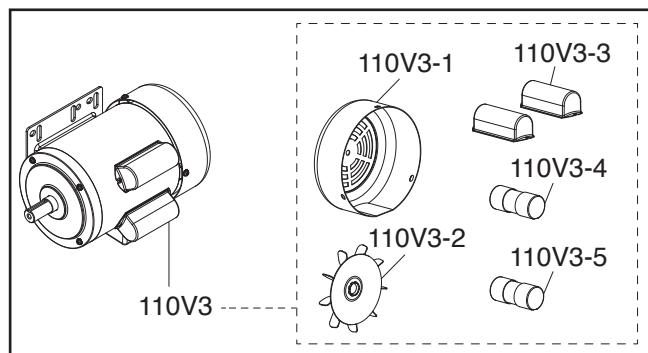
- Motor and wiring changed.

These changes do not affect how the machine assembles or functions; however, the motor amperage has changed. This update includes new power supply circuit requirements, which must be used *instead* of those in the owner's manual.

Aside from the information contained in this update, all other content in the owner's manual applies to this machine. For your own safety, you **MUST** read and understand this update and the applicable owner's manual. **Keep this update for future reference!**

If you have any further questions about this manual update or the changes made to the machine, contact our Technical Support at (570) 546-9663 or email techsupport@grizzly.com.

Revised Motor Parts



REF	PART #	DESCRIPTION
110V3	P1037Z110V3	MOTOR 1-1/2HP 110/220V 1-PH V3.07.25
110V3-1	P1037Z110V3-1	FAN COVER
110V3-2	P1037Z110V3-2	MOTOR FAN
110V3-3	P1037Z110V3-3	CAPACITOR COVER
110V3-4	P1037Z110V3-4	S CAPACITOR 200M 125V 1-3/8 X 2-3/4
110V3-5	P1037Z110V3-5	R CAPACITOR 30M 300V 1-3/8 X 2-7/8

Revised Specifications

Motor:

Amps..... 14A at 110V, 7A at 220V

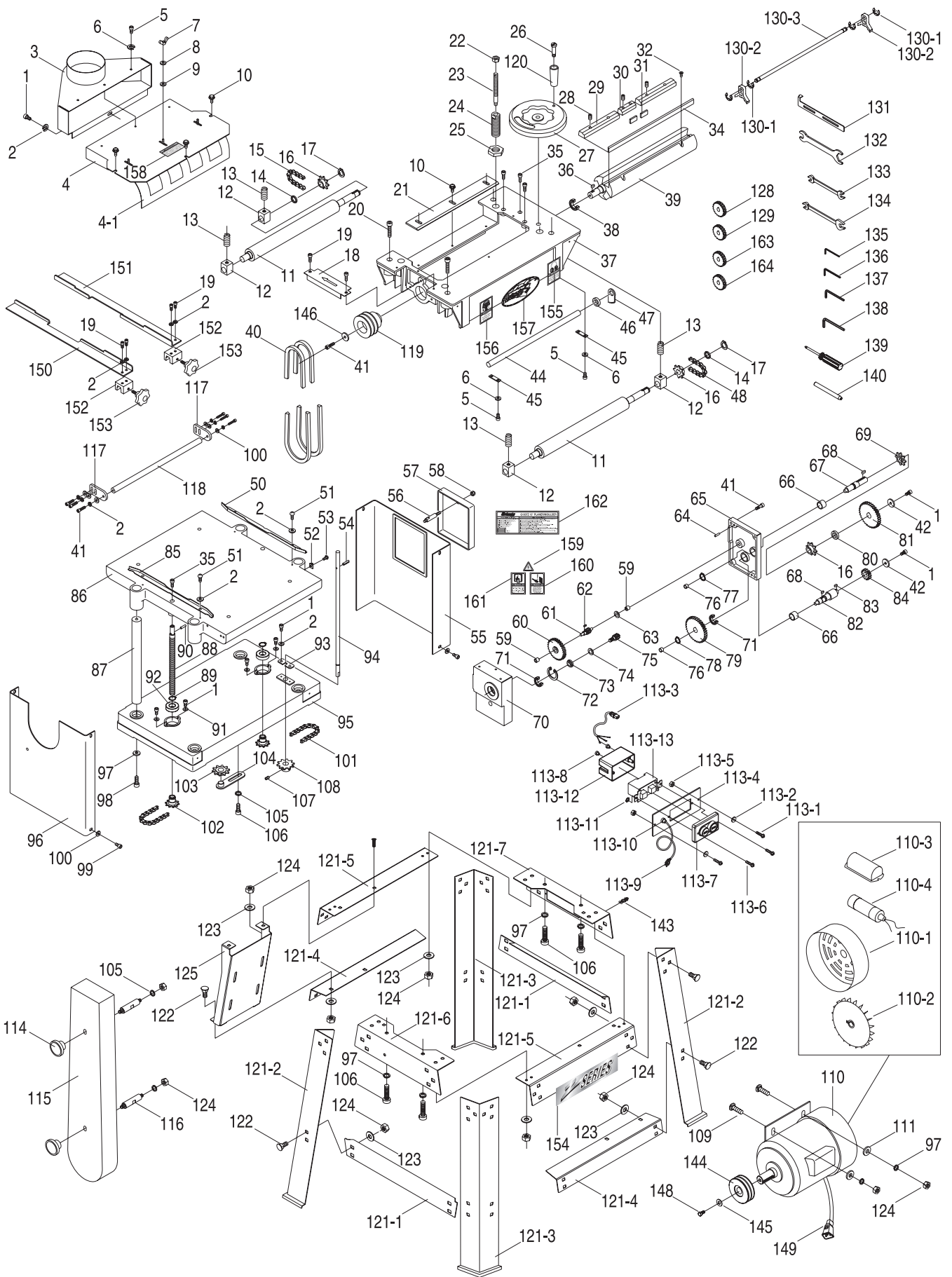
Voltage Conversion

The voltage conversion **MUST** be performed by an electrician or qualified service personnel.

Note: If the diagram included on the motor conflicts with the one in the manual, the motor may have changed since the manual was printed. Use the diagram provided on the motor.

To convert machine to 220V:

1. DISCONNECT MACHINE FROM POWER!
2. Replace 5-15 plug on power cord with 6-15 plug.
3. Re-wire motor for 220V operation. (Refer to diagram on **Page 4** of this update, or inside motor junction box).



REF	PART #	DESCRIPTION
1	PSB26M	Cap Screw M6-1 x 12
2	PLW03M	Lock Washer 6mm
3	P1037Z003	Dust Chute
4	P1037Z004	Chip Bracket
4-1	P1037Z004-1	Chip Guide
5	PSB86M	Cap Screw M5-.8 x 10
6	PLW01M	Lock Washer 5mm
7	PWN03M	Wing Nut M4-.7
8	PLW02M	Lock Washer 4mm
9	PW05M	Flat Washer 4mm
10	PFB01M	Flange Bolt M6-1 x 12
11	P1037Z011	Roller
12	P1037Z012	Bushing
13	P1037Z013	Spring
14	P1037Z014	Spacer
15	P1037Z015	Chain
16	P1037Z016	Sprocket
17	PR05M	Ext Retaining Ring 15mm
18	P1037Z018	Cover
19	PSB04M	Cap Screw M6-1 x 10
20	PSB13M	Cap Screw M8-1.25 x 30
21	P1037Z021	Chip Guard Plate
22	PN02M	Hex Nut M10-1.5
23	P1037Z023	Adjustment Shaft
24	P1037Z024	Adjustable Shaft
25	P1037Z025	Lock Nut M22
26	PS42M	Phlp Hd Scr M8-1.25 x 35
27	P1037Z027	Handwheel
28	PSS14M	Set Screw M8-1.25 x 12
29	P1037Z029	Long Gib
30	P1037Z030	Short Gib
31	P1037Z031	Plate
32	PSS53M	Set Screw M5-.8 x 12
34	P1037Z034	Knife
35	PSB01M	Cap Screw M6-1 x 16
36	PK20M	Key 5 x 5 x 15
37	P1037Z037	Upper Frame
38	P6204	Ball Bearing 6204
39	P1037Z039	Cutterhead
40	PVM50	V-belt M-50 3L500
41	PSB02M	Cap Screw M6-1 x 20
42	PW03M	Flat Washer 6mm
44	P1037Z044	Shaft
45	P1037Z045	Fixing Plate
46	P1037Z046	Spacer
47	P1037Z047	Anti-Kickback Finger
48	P1037Z048	Chain #410 X 18
50	P1037Z050	Fence, Right
51	PS68M	Phlp Hd Scr M6-1 x 10
52	P1037Z052	Pointer
53	PS07M	Phlp Hd Scr M4-.7 x 8
54	PRP42M	Roll Pin 3 x 20

REF	PART #	DESCRIPTION
55	P1037Z055	Cover, Right
56	P1037Z056	Shaft
57	P1037Z057	Gear Cover
58	PN35M	Acorn Nut M6-1
59	P1037Z059	Bushing
60	P1037Z060	Gear 58T
61	P1037Z061	Gear 10T
62	PK03M	Key 3 x 3 x 8
63	PW03M	Flat Washer 6mm
64	P1037Z064	Pin
65	P1037Z065	Gear Box Cover
66	P1037Z066	Bushing
67	P1037Z067	Chain Sprocket Shaft
68	PK29M	Key 4 x 4 x 8
69	P1037Z069	Sprocket
70	P1037Z070	Gear Box
71	P6202	Ball Bearing 6202
72	PR21M	Int Retaining Ring 35mm
73	P1037Z073	Bushing
74	PW14M	Flat Washer 15mm
75	P1037Z075	Gear 9T
76	P1037Z076	Bushing
77	PR06M	Ext Retaining Ring 16mm
78	PR02M	Ext Retaining Ring 14mm
79	P1037Z079	Gear 72T
80	P1037Z080	Spacer
81	P1037Z081	Gear 46T
82	P1037Z082	Shaft
83	PK29M	Key 4 x 4 x 8
84	P1037Z084	Gear 31T
85	P1037Z085	Fence, Left
86	P1037Z086	Middle Frame
87	P1037Z087	Post
88	P1037Z088	Elevation Screw
89	PR09M	Ext Retaining Ring 20mm
90	PRP37M	Roll Pin 3 x 14
91	PW03M	Flat Washer 6mm
92	P6004	Ball Bearing 6004
93	P1037Z093	Fixing Plate
94	P1037Z094	Shaft
95	P1037Z095	Base
96	P1037Z096	Cover, Left
97	PLW04M	Lock Washer 8mm
98	PSB31M	Cap Screw M8-1.25 x 25
99	PSB68M	Cap Screw M6-1 x 8
100	PW03M	Flat Washer 6mm
101	P1037Z101	Chain
102	P1037Z102	Sprocket
103	P1037Z103	Sprocket
104	P1037Z104	Idler Bracket
105	PW01M	Flat Washer 8mm
106	PSB14M	Cap Screw M8-1.25 x 20

REF	PART #	DESCRIPTION
107	PSS02M	Set Screw M6-1 x 6
108	P1037Z108	Sprocket
109	PCB05	Carriage Bolt 5/16-18 x 3/4
110	P1037Z110	Motor
110-1	P1037Z110-1	Fan Cover
110-2	P1037Z110-2	Motor Fan
110-3	P1037Z110-3	Capacitor Cover
110-4	PC400A	Capacitor 400MFD 125V
111	PW01M	Flat Washer 8mm
113	P1037Z113	Switch Assembly
113-1	PS21M	Phlp Hd Scr M4-.7 x 15
113-2	PW05M	Flat Washer 4mm
113-3	P1037Z113-3	Switch Cord
113-4	P1037Z113-4	Switch Plate
113-5	PN04M	Hex Nut M4-.7
113-6	PHTEK28M	Tap Screw M4 x 25
113-7	P1037Z113-7	Switch Cover
113-8	P1037Z113-8	Strain Relief
113-9	P1037Z113-9	Power Cord
113-10	P1037Z113-10	Strain Relief
113-11	PTLW06M	Ext Tooth Washer 4mm
113-12	P1037Z113-12	Switch Box
113-13	P1037Z113-13	Switch
114	P1037Z114	Knob (Female) M8-1.25
115	P1037Z115	Pulley Cover
116	P1037Z116	Stud
117	P1037Z117	Fence Guide Rod Bracket
118	P1037Z118	Fence Guide Rod
119	P1037Z119	Pulley
120	P1037Z120	Handle
121	P1037Z121	Stand Assembly
121-1	P1037Z121-1	Lower Side Brace
121-2	P1037Z121-2	Leg E
121-3	P1037Z121-3	Leg F
121-4	P1037Z121-4	Lower End Brace
121-5	P1037Z121-5	Upper End Brace
121-6	P1037Z121-6	Upper Side Brace, L
121-7	P1037Z121-7	Upper Side Brace, R
122	PCB02	Carriage Bolt 5/16-18 x 1/2
123	PW01M	Flat Washer 8mm

REF	PART #	DESCRIPTION
124	PN02	Hex Nut 5/16-18
125	P1037Z125	Motor Mount
128	P1037Z128	57T Gear
129	P1037Z129	20T Gear
130	P1037Z130	Knife Setting Jig
130-1	PEC10M	E-Clip 9mm
130-2	P1037Z130-2	Knife Setting Jig Foot
130-3	P1037Z130-3	Knife Setting Jig Rod
131	P1037Z131	"L" Gauge
132	P1037Z132	17 x 32 Wrench
133	PWR1012	10 X 12 Wrench
134	PWR1113	11 X 13 Wrench
135	PAW03M	Hex Wrench 3mm
136	PAW04M	Hex Wrench 4mm
137	PAW05M	Hex Wrench 5mm
138	PAW06M	Hex Wrench 6mm
139	P1037Z139	Screwdriver
140	P1037Z140	Drift
143	P1037Z143	Wire Clip
144	P1037Z144	Pulley
145	PW01M	Flat Washer 8mm
146	PW03M	Flat Washer 6mm
147	PW01M	Flat Washer 8mm
148	PB09	Hex Bolt 5/16-18 x 1/2
149	P1037Z149	Motor Cord
150	P1037Z150	Left Moulding Fence
151	P1037Z151	Right Moulding Fence
152	P1037Z152	Bracket
153	P1037Z153	Knob (Male) M6-1 x 20
154	PLABEL-4	Z Series Label
155	P1037Z155	Ear Protection Label
156	P1037Z156	Respirator/Glasses Label
157	G9987	Grizzly Name Plate
158	P1037Z158	Cutterhead Cover Label
159	PLABEL-14	Electricity Label
160	PLABEL-26	Unplug Label
161	PLABEL-12	Read Manual Label
162	P1037Z162	Machine ID Label
163	P1037Z163	31T Gear
164	P1037Z164	46T Gear