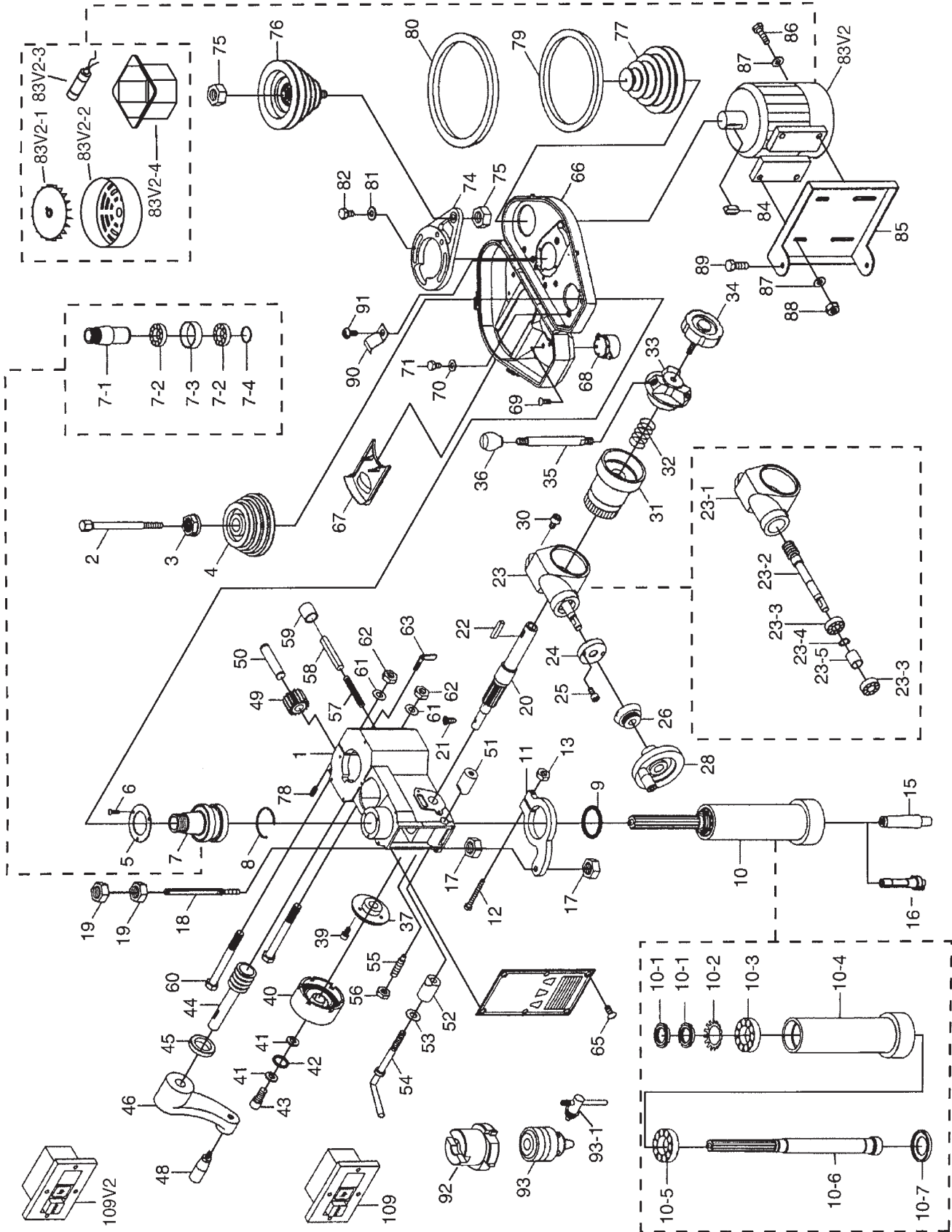


SECTION 9: PARTS

Main Assembly Breakdown



Main Assembly Parts List

REF	PART #	DESCRIPTION
1	P1005Z001	HEAD BODY
2	P1005Z002	CHUCK ARBOR BOLT 7/16-20
3	P1005Z003	SPINDLE LOCKNUT 34 X 16
4	P1005Z004	SPINDLE PULLEY
5	P1005Z005	OUTER BEARING PLATE
6	P1005Z006	PHLP HD SCR 1/4-20 X 1/2
7	P1005Z007	SPINDLE TAPER SLEEVE SET
7-1	P1005Z007-1	SPINDLE TAPER SLEEVE
7-2	P1005Z007-2	BALL BEARING 6007ZZ
7-3	P1005Z007-3	WASHER 60 X 55 X 16
7-4	P1005Z007-4	EXT RETAINING RING 35MM
8	P1005Z008	EXT RETAINING RING 61MM
9	P1005Z009	RUBBER SEAL
10	P1005Z010	RACK SLEEVE SET
10-1	P1005Z010-1	SPANNER NUT 24.5-20
10-2	P1005Z010-2	EXT TOOTH WASHER 25 MM
10-3	P1005Z010-3	TAPERED ROLLER BEARING 30205
10-4	P1005Z010-4	QUILL
10-5	P1005Z010-5	TAPERED ROLLER BEARING 30206
10-6	P1005Z010-6	SPINDLE SHAFT
10-7	P1005Z010-7	BEARING CAP
11	P1005Z011	FEED BASE
12	P1005Z012	HEX BOLT 1/4-20 X 2
13	P1005Z013	HEX NUT 1/4-20
15	P1005Z015	CHUCK ARBOR R8 W7/16-20
16	P1005Z016	CUTTER ARBOR R8 W7/16-20
17	P1005Z017	HEX NUT 3/8-16
18	P1005Z018	GRADUATED ROD SET
19	P1005Z019	HEX NUT 1/2-20
20	P1005Z020	PINION SHAFT
21	P1005Z021	FLAT HD SCR 10-24 X 1/2
22	P1005Z022	KEY 7 X 7 X 20
23	P1005Z023	FEED COVER SET
23-1	P1005Z023-1	FEED COVER
23-2	P1005Z023-2	WORM SHAFT
23-3	P1005Z023-3	BALL BEARING 6202ZZ
23-4	P1005Z023-4	EXT RETAINING RING 15MM
23-5	P1005Z023-5	SPACER 34 X 28
24	P1005Z024	WORM COVER
25	P1005Z025	PHLP HD SCR 10-24 X 3/8
26	P1005Z026	GRADUATED DIAL
28	P1005Z028	HANDWHEEL ASSEMBLY
30	P1005Z030	CAP SCREW 5/16-18 X 3/4
31	P1005Z031	WORM GEAR
32	P1005Z032	COMPRESSION SPRING 11/16 X 1
33	P1005Z033	PINION HUB
34	P1005Z034	PINION HUB CAP
35	P1005Z035	DOWNFEED SHOULDER STUD
36	P1005Z036	DOWNFEED HANDLE KNOB 1/2-12
37	P1005Z037	COIL SPRING BASE
39	P1005Z039	PHLP HD SCR 10-24 X 3/4
40	P1005Z040	COIL SPRING & SPRING COVER
41	P1005Z041	LOCK WASHER 1/4
42	P1005Z042	FLAT WASHER 1/4

REF	PART #	DESCRIPTION
43	P1005Z043	CAP SCREW 1/4-20 X 5/8
44	P1005Z044	WORM SHAFT
45	P1005Z045	BUSHING
46	P1005Z046	CRANK ARM
48	P1005Z048	CRANK HANDLE
49	P1005Z049	WORM GEAR
50	P1005Z050	WORM GEAR SHAFT
51	P1005Z051	GIB
52	P1005Z052	GIB
53	P1005Z053	FLAT WASHER 1/2
54	P1005Z054	LOCK HANDLE
55	P1005Z055	SET SCREW 3/8-16 X 32 DOG POINT
56	P1005Z056	HEX NUT 3/8-16
57	P1005Z057	COMPRESSION SPRING 1/2 X 3-1/16
58	P1005Z058	PIN
59	P1005Z059	RUBBER BUSHING
60	P1005Z060	HEX BOLT 1/2-12 X 6-3/4
61	P1005Z061	FLAT WASHER 1/2
62	P1005Z062	HEX NUT 1/2-12
63	P1005Z063	THUMB SCREW 3/8-16 X 17
65	P1005Z065	PHLP HD SCR 1/4-20 X 1/4
66	P1005Z066	BELT COVER
67	P1005Z067	SLIDING COVER
68	P1005Z068	SPINDLE COVER
69	P1005Z069	FLAT HD SCR M3-.5 X 15
70	P1005Z070	FLAT WASHER 1/4
71	P1005Z071	PHLP HD SCR 1/4-20 X 1/2
74	P1005Z074	IDLER PULLEY BASE
75	P1005Z075	HEX NUT 5/8-11
76	P1005Z076	IDLER PULLEY SET
77	P1005Z077	MOTOR PULLEY SET
78	P1005Z078	OILER 1/4
79	P1005Z079	V-BELT A-30 4L300
80	P1005Z080	V-BELT A-38 4L380
81	P1005Z081	FLAT WASHER 5/16
82	P1005Z082	HEX BOLT 5/16-18 X 1-1/2
83V2	P1005Z083V2	MOTOR 1HP 110V/220V V2.07.10
83V2-1	P1005Z083V2-1	MOTOR FAN V2.07.10
83V2-2	P1005Z083V2-2	MOTOR FAN COVER V2.07.10
83V2-3	P1005Z083V2-3	START CAPACITOR V2.07.10
83V2-4	P1005Z083V2-4	MOTOR JUNCTION BOX V2.07.10
84	P1005Z084	KEY 7 X 7 X 38
85	P1005Z085	MOTOR MOUNT PLATE
86	P1005Z086	HEX BOLT 5/16-18 X 1
87	P1005Z087	FLAT WASHER 5/16
88	P1005Z088	HEX NUT 5/16-18
89	P1005Z089	HEX BOLT 3/8-16 X 1/2
90	P1005Z090	WIRE RELIEF RETAINER
91	P1005Z091	PHLP HD SCR 1/4-20 X 1/2
92	P1005Z092	MILLING CUTTER
93	P1005Z093	CHUCK 1/2-JT6
93-1	P1005Z093-1	CHUCK KEY
109	P1005Z109	SWITCH
109V2	P1005Z109V2	SWITCH V2.07.08



Table Breakdown

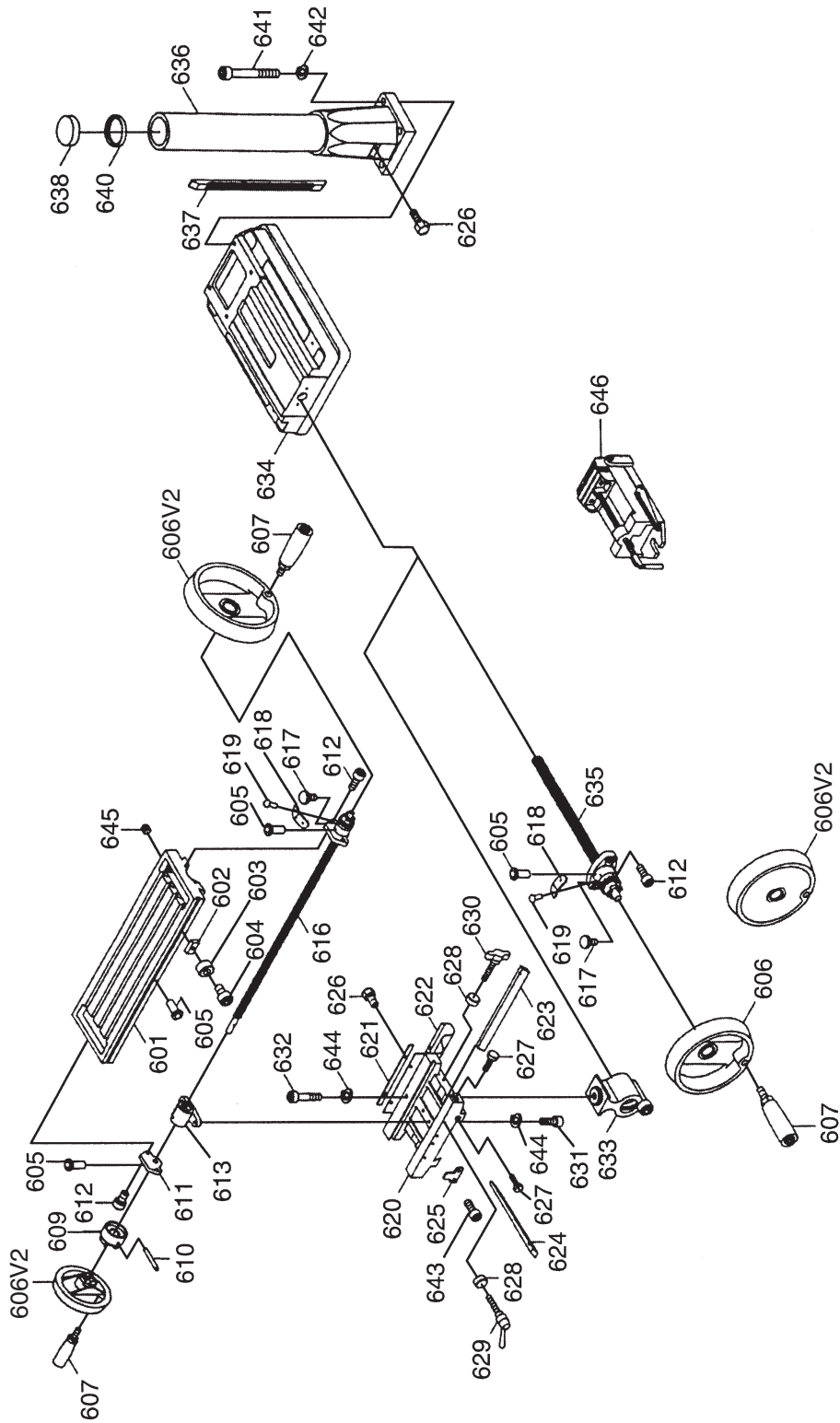
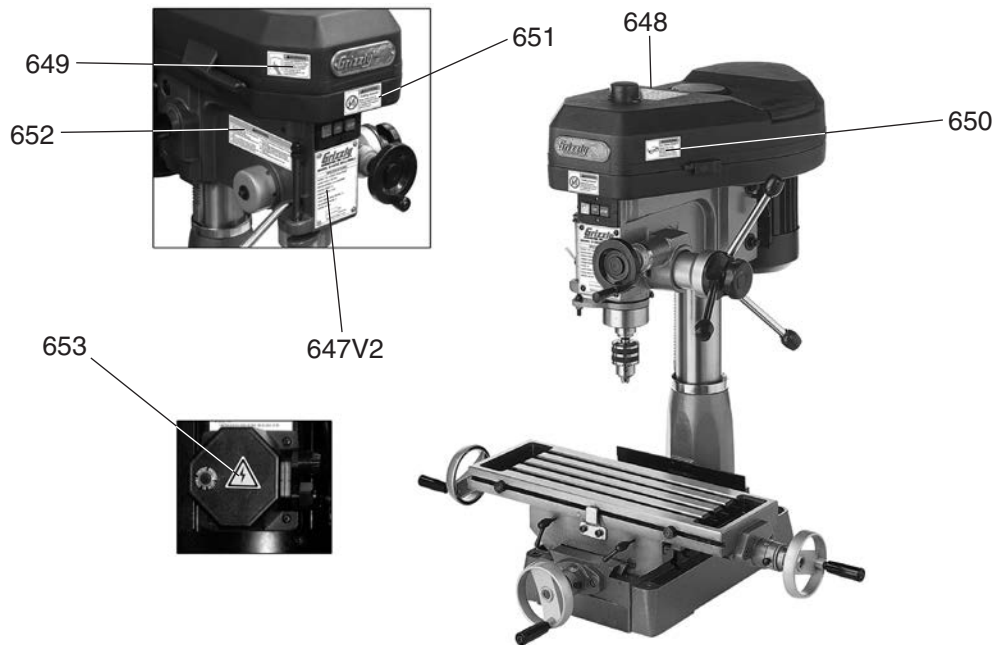


Table and Labels Parts List

REF	PART #	DESCRIPTION
601	P1005Z601	TABLE
602	P1005Z602	FIXED BLOCK
603	P1005Z603	MOVABLE FIXED RING
604	P1005Z604	CAP SCREW 1/4-20 X 1/2
605	P1005Z605	OILER 1/4
606V2	P1005Z606V2	HANDWHEEL PLASTIC V2.07.08
607	P1005Z607	HANDWHEEL HANDLE
609	P1005Z609	TABLE CLUTCH
610	P1005Z610	ROLL PIN 5 X 38
611	P1005Z611	LEFT FLANGE
612	P1005Z612	CAP SCREW 5/16-18 X 3/4
613	P1005Z613	TABLE NUT 23.5-10
616	P1005Z616	ACME SCREW 23.5 X 10 X 762
617	P1005Z617	KNURLED THUMB SCREW M6-1 x 10
618	P1005Z618	LIMIT PLATE
619	P1005Z619	RIVET 2
620	P1005Z620	SADDLE
621	P1005Z621	ANTIDUST PLATE
622	P1005Z622	ANTIDUST PLATE
623	P1005Z623	GIB STRIP
624	P1005Z624	GIB STRIP
625	P1005Z625	MOVABLE FIXED BLOCK
626	P1005Z626	HEX BOLT 5/16-18 X 1/2
627	P1005Z627	GIB STRIP BOLT 5/16-18 X 42
628	P1005Z628	BUSHING

REF	PART #	DESCRIPTION
629	P1005Z629	LOCK HANDLE 5/16-18 X 1-3/8
630	P1005Z630	T SCREW 5/16-18 X 42
631	P1005Z631	CAP SCREW 5/16-18 X 1
632	P1005Z632	CAP SCREW 5/16-18 X 1/4
633	P1005Z633	ACME NUT 23.5 X 10
634	P1005Z634	SWIVEL BASE
635	P1005Z635	ACME SCREW 23.5 X 10 X 390
636	P1005Z636	COLUMN BASE
637	P1005Z637	RACK
638	P1005Z638	COLUMN HEAD SET
640	P1005Z640	COLUMN FLANGE RING
641	P1005Z641	CAP SCREW 7/16-14 X 2
642	P1005Z642	LOCK WASHER 7/16
643	P1005Z643	CAP SCREW 5/16-18 X 3/4
644	P1005Z644	LOCK WASHER 5/16
645	P1005Z645	PLUG
646	P1005Z646	WISE
648	P1005Z648	MACHINE SPEED CHART
649	P1005Z649	READ MANUAL 2.8W X 1.5H
650	P1005Z650	SAFETY GLASSES 2.8W X 1.5H
651	P1005Z651	HAND MILL WARNING SMALL
652	P1005Z652	MACHINE WARNING LABEL
653	P1005Z653	ELECTRICITY
647V2	P1005Z647V2	MACHINE NAME PLATE V2.07.08



WARNING

Safety labels warn about machine hazards and ways to prevent injury. The owner of this machine **MUST** maintain the original location and readability of the labels on the machine. If any label is removed or becomes unreadable, **REPLACE** that label before using the machine again. Contact Grizzly at (800) 523-4777 or www.grizzly.com to order new labels.

