

READ THIS FIRST



Model G0624

IMPORTANT UPDATE

For Machines Mfg. Since August, 2012
and Owner's Manual Printed November, 2006

The following changes were recently made to this machine since the owner's manual was printed:

- Obtained CSA certification for meeting CSA 22.2 #71.2-08 and UL 987-7th standards.
- Changed the motor nominal voltage 110V to 120V.

This document provides relevant updates to portions of the owner's manual that no longer apply and additional information required by CSA—aside from this information, all other content in the owner's manual applies and **MUST** be read and understood for your own safety. **IMPORTANT: Keep this update with the owner's manual for future reference.**

For questions or help, contact our Tech Support at (570) 546-9663 or techsupport@grizzly.com.

Changed Specifications

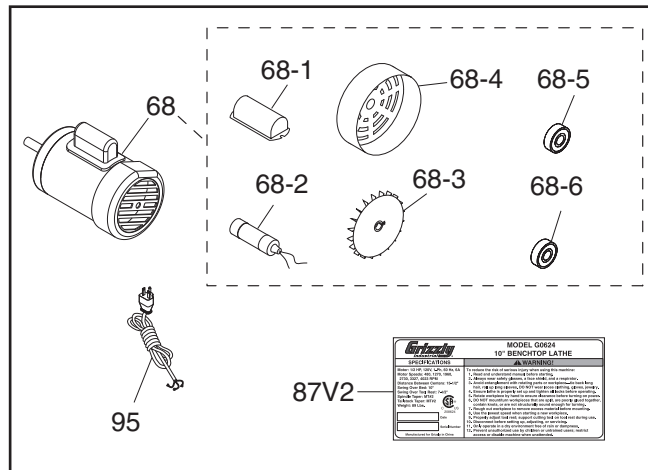
Electrical

Power Requirement..... 120V, Single Phase, 60 Hz

Motor

Voltage 120V
Spindle Speeds 480-4000 RPM

New/Revised G0624 Parts

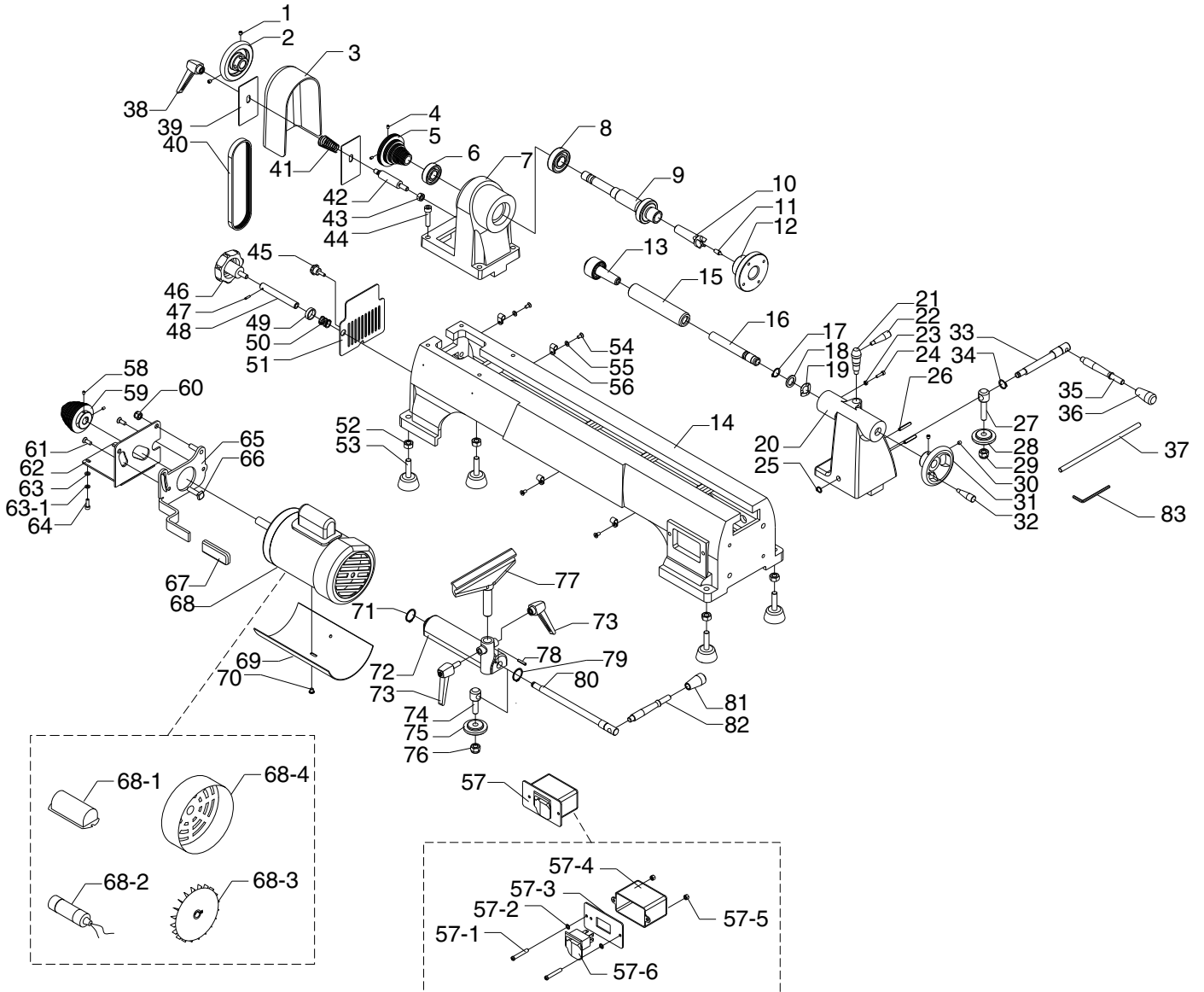


REF	PART #	DESCRIPTION
68	P0624068	MOTOR 1/2HP 120V 1-PH
68-1	P0624068-1	CAPACITOR COVER
68-2	P0624068-2	R CAPACITOR 25M 250V
68-3	P0624068-3	MOTOR FAN
68-4	P0624068-4	MOTOR FAN COVER
68-5	P6202ZZ	BALL BEARING 6202ZZ
68-6	P6200ZZ	BALL BEARING 6200ZZ
87V2	P0624087V2	MACHINE ID LABEL CSA V2.08.12
95	P0624095	POWER CORD 18G 3W 72" 5-15P



COPYRIGHT © SEPTEMBER, 2012 BY GRIZZLY INDUSTRIAL, INC.
WARNING: NO PORTION OF THIS MANUAL MAY BE REPRODUCED IN ANY SHAPE OR FORM WITHOUT THE WRITTEN APPROVAL OF GRIZZLY INDUSTRIAL, INC.
#BLTS15314 PRINTED IN CHINA

Parts Breakdown



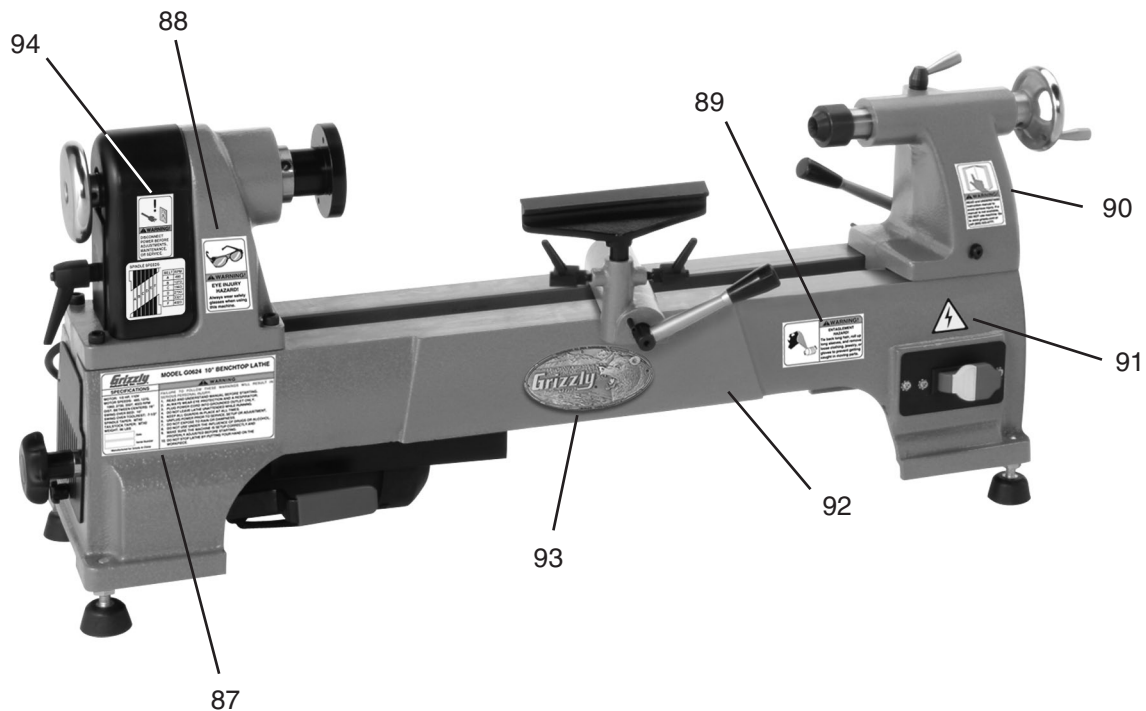
Parts List

REF	PART #	DESCRIPTION
1	PSS02M	SET SCREW M6-1 X 6
2	P0624002	HEADSTOCK HANDWHEEL
3	P0624003	PULLEY SAFETY COVER
4	PSS79M	SET SCREW M4-.7 X 6
5	P0624005	SPINDLE PULLEY
6	P6004ZZ	BALL BEARING 6004ZZ
7	P0624007	HEADSTOCK CASTING
7A	P0624007A	COMPLETE HEADSTOCK ASSEMBLY
8	P6005ZZ	BALL BEARING 6005ZZ
9	P0624009	SPINDLE
10	P0624010	SPUR CENTER MT#2
11	P0624011	INDEXED SPINDLE 5-7MM TAPER
12	P0624012	FACEPLATE 3"
13	P0624013	LIVE CENTER MT#2
13-1	P0624013-1	INDEXED SPINDLE 9-11MM TAPER
14	P0624014	BEDWAY
15	P0624015	TAILSTOCK QUILL
16	P0624016	TAILSTOCK LEADSCREW
17	PR05M	EXT RETAINING RING 15MM
18	PW14	FLAT WASHER 5/8
19	P0624019	RUBBER COLLAR
20	P0624020	TAILSTOCK CASTING
20A	P0624020A	COMPLETE TAILSTOCK ASSY
21	P0624021	ECCENTRIC SHAFT
22	P0624022	QUILL LOCK HANDLE
23	PN04M	HEX NUT M4-.7
24	PCAP16M	CAP SCREW M4-.7 X 16
25	PR01M	EXT RETAINING RING 10MM
26	PRP05M	ROLL PIN 5 X 30
27	P0624027	ADJUSTMENT SHAFT
28	P0624028	SLIDE COLLAR
29	PLN05M	LOCK NUT M10-1.5
30	PSS02M	SET SCREW M6-1 X 6
31	P0624031	TAILSTOCK HANDWHEEL
32	P0624032	TAILSTOCK HANDWHEEL HANDLE
33	P0624033	ECCENTRIC SHAFT
34	PR06M	EXT RETAINING RING 16MM
35	P0624035	TAILSTOCK RELEASE LEVER
36	P0624036	LEVER KNOB
37	P0624037	KNOCKOUT BAR
38	P0624038	LOCK HANDLE
39	P0624039	GUARD PLATE
40	P0624040	RIBBED V-BELT ULTRA-FLEX 3V X 600
41	P0624041	COMPRESSION SPRING
42	P0624042	THREADED SHAFT
43	PN03M	HEX NUT M8-1.25
44	PCAP40M	CAP SCREW M8-1.25 X 35
45	P0624045	THUMB SCREW M5-.8 X 15
46	P0624046	BELT TENSION LOCK KNOB

REF	PART #	DESCRIPTION
47	PRP61M	ROLL PIN 3 X 12
48	P0624048	SHAFT
49	P0624049	SPACER 18MM
50	P0624050	COMPRESSION SPRING
51	P0624051	LOWER PULLEY ACCESS PLATE
52	PN08	HEX NUT 3/8-16
53	P0624053	RUBBER FOOT
54	PS09M	PHLP HD SCR M5-.8 X 10
55	PW02M	FLAT WASHER 5MM
56	P0624056	WIRE CLAMP
57	G8988	SWITCH
57-1	PS10	PHLP HD SCR 10-24 X 1-1/2
57-2	PTLW02M	EXT TOOTH WASHER 5MM
57-3	P0624057-3	SWITCH PLATE
57-4	P0624057-4	SWITCH BOX
57-5	PN07	HEX NUT 10-24
57-6	P0624057-6	SWITCH W/SAFETY KEY
58	PSS02M	SET SCREW M6-1 X 6
59	P0624059	MOTOR PULLEY
60	PLN04M	LOCK NUT M8-1.25
61	PS11M	PHLP HD SCR M6-1 X 16
62	P0624062	MOTOR PLATE
63	PW02M	FLAT WASHER 5MM
63-1	PLW01M	LOCK WASHER 5MM
64	PCAP10M	CAP SCREW M5-.8 X 15
65	P0624065	TENSION BRACKET
66	P0624066	SQUARE HEAD BOLT
67	P0624067	RUBBER SLEEVE
68	P0624068	MOTOR 1/2HP 120V 1-PH
68-1	P0624068-1	CAPACITOR COVER
68-2	P0624068-2	R CAPACITOR 25M 250V
68-3	P0624068-3	MOTOR FAN
68-4	P0624068-4	MOTOR FAN COVER
69	P0624069	DUST GUARD
70	P0624070	LOCTITE SCREW 10-24 X 6
71	PR01M	EXT RETAINING RING 10MM
72	P0624072	TOOL POST BASE
73	P0624073	TOOL REST LOCK HANDLE M8-1.25 X 20
74	P0624074	ADJUST SHAFT
75	P0624075	SLIDE COLLAR
76	PLN05M	LOCK NUT M10-1.5
77	P0624077	TOOL REST
78	PRP39M	ROLL PIN 4 X 20
79	PR02M	EXT RETAINING RING 14MM
80	P0624080	ECCENTRIC SHAFT
81	P0624081	LEVER KNOB
82	P0624082	TOOL REST RELEASE LEVER
83	PAW02.5M	HEX WRENCH 2.5MM



Warning Labels Parts List



REF	PART #	DESCRIPTION
87	P0624087	MACHINE ID LABEL
88	P0624088	SAFETY GLASSES LABEL 1-1/2" X 2-1/2"
89	P0624089	ENTANGLEMENT HAZARD LABEL
90	P0624090	READ MANUAL LABEL 1-1/2" X 2-1/2"
91	PLABEL-14	ELECTRICITY LABEL
92	PPAINT-1	GRIZZLY GREEN PAINT
93	G9987	GRIZZLY MINI NAME PLATE
94	P0624094	DISCONNECT POWER-SPINDLE SPEEDS LABEL

WARNING

Safety labels warn about machine hazards and ways to prevent injury. The owner of this machine **MUST** maintain the original location and readability of the labels on the machine. If any label is removed or becomes unreadable, **REPLACE** that label before using the machine again. Contact Grizzly at (800) 523-4777 or www.grizzly.com to order new labels.

