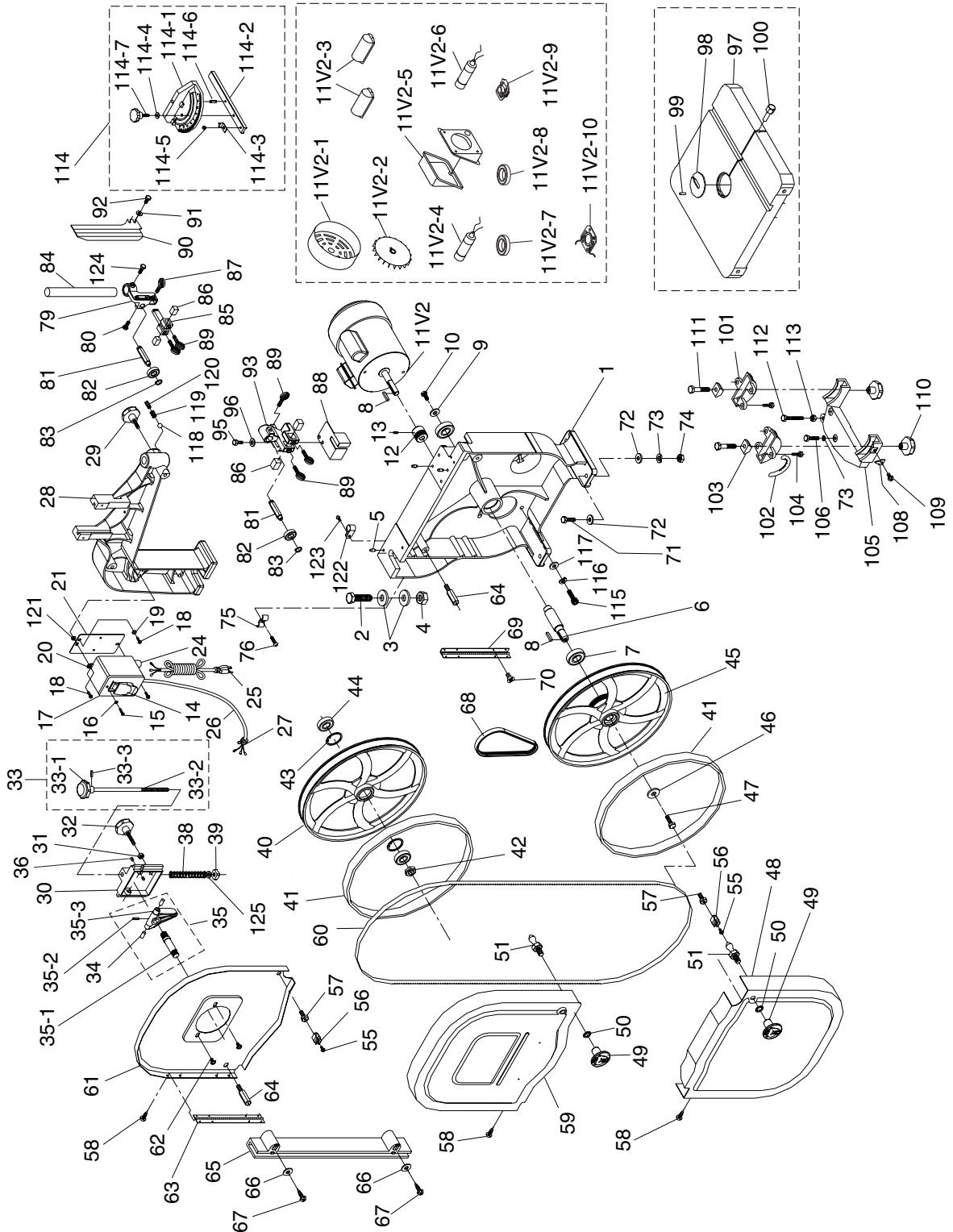


# SECTION 9: PARTS

We do our best to stock replacement parts when possible, but we cannot guarantee that all parts shown are available for purchase. Call (800) 523-4777 or visit [www.grizzly.com/parts](http://www.grizzly.com/parts) to check for availability.

## Main



# Main Parts List

| REF     | PART #        | DESCRIPTION                       |
|---------|---------------|-----------------------------------|
| 1       | P0580001      | BASE                              |
| 2       | P0580002      | HEX BOLT M16-2 X 55               |
| 3       | P0580003      | FLAT WASHER 16MM                  |
| 4       | P0580004      | HEX NUT M16-2                     |
| 5       | P0580005      | PIN 1/4"                          |
| 6       | P0580006      | LOWER WHEEL SHAFT                 |
| 7       | P0580007      | BALL BEARING 6204ZZ               |
| 8       | P0580008      | KEY 5 X 5 X 25                    |
| 9       | P0580009      | FLAT WASHER 8MM                   |
| 10      | P0580010      | PHLP HD SCR M8-1.25 X 16          |
| 11V2    | P0580011V2    | MOTOR 3/4HP 115/230V 1PH V2.11.06 |
| 11V2-1  | P0580011V2-1  | MOTOR FAN COVER                   |
| 11V2-2  | P0580011V2-2  | MOTOR FAN                         |
| 11V2-3  | P0580011V2-3  | CAPACITOR COVER                   |
| 11V2-4  | P0580011V2-4  | R CAPACITOR 25M 250V              |
| 11V2-5  | P0580011V2-5  | ELECTRICAL BOX                    |
| 11V2-6  | P0580011V2-6  | S CAPACITOR 200M 125V             |
| 11V2-7  | P0580011V2-7  | BALL BEARING 6203ZZ               |
| 11V2-8  | P0580011V2-8  | BALL BEARING 6202ZZ               |
| 11V2-9  | P0580011V2-9  | CENTRIFUGAL SWITCH 1725 RPM       |
| 11V2-10 | P0580011V2-10 | CONTACT PLATE                     |
| 12      | P0580012      | MOTOR PULLEY                      |
| 13      | P0580013      | SET SCREW M6-1 X 10               |
| 14      | P0580014      | GRIZZLY SAFETY PADDLE SWITCH      |
| 15      | P0580015      | TAP SCREW M3.5 X 12               |
| 16      | P0580016      | FLAT WASHER 4MM                   |
| 17      | P0580017      | SWITCH ENCLOSURE BRACKET          |
| 18      | P0580018      | PHLP HD SCR M5-.8 X 16            |
| 19      | P0580019      | EXT TOOTH WASHER 5MM              |
| 20      | P0580020      | SWITCH ENCLOSURE                  |
| 21      | P0580021      | SWITCH PLATE                      |
| 24      | P0580024      | STRAIN RELIEF                     |
| 25      | P0580025      | POWER CORD 16G X 3W 73"L          |
| 26      | P0580026      | POWER CORD 16G X 3W 24"L          |
| 27      | P0580027      | STRAIN RELIEF                     |
| 28      | P0580028      | UPPER FRAME ARM                   |
| 29      | P0580029      | KNOB BOLT M10-1.5 X 25            |
| 30      | P0580030      | UPPER WHEEL SLIDING BRACKET       |
| 31      | P0580031      | HEX NUT M8-1.25                   |
| 32      | P0580032      | KNOB BOLT M8-1.25 X 45            |
| 33      | P0580033      | ADJUSTMENT SCREW ASSY 7" THREAD   |
| 33-1    | P0580033-1    | KNOB                              |
| 33-2    | P0580033-2    | MICRO ADJUSTING BOLT 285MM        |
| 33-3    | P0580033-3    | ROLL PIN 3 X 18                   |
| 34      | P0580034      | DOWEL PIN                         |
| 35      | P0580035      | UPPER WHEEL SHAFT HINGE ASSY      |
| 35-1    | P0580035-1    | UPPER WHEEL SHAFT                 |
| 35-2    | P0580035-2    | ROLL PIN 4 X 24                   |
| 35-3    | P0580035-3    | UPPER WHEEL SHAFT HINGE           |
| 36      | P0580036      | SET SCREW M5-.8 X 8               |
| 38      | P0580038      | COIL SPRING 3.8 X 13.5 X 81       |
| 39      | P0580039      | SQUARE NUT M10-1.5                |
| 40      | P0580040      | UPPER WHEEL                       |
| 41      | P0580041      | WHEEL TIRE                        |

| REF | PART #   | DESCRIPTION                     |
|-----|----------|---------------------------------|
| 42  | P0580042 | HEX NUT M12-1.25                |
| 43  | P0580043 | INT RETAINING RING 35MM         |
| 44  | P0580044 | BALL BEARING 6202 ZZ            |
| 45  | P0580045 | LOWER WHEEL                     |
| 46  | P0580046 | FLAT WASHER 8MM                 |
| 47  | P0580047 | HEX BOLT M8-1.25 X 20 LH        |
| 48  | P0580048 | LOWER WHEEL GUARD               |
| 49  | P0580049 | KNOB M8-1.25                    |
| 50  | P0580050 | INT TOOTH WASHER 8MM            |
| 51  | P0580051 | LATCH STUD M8-1.25 X 14         |
| 55  | P0580055 | PHLP HD SCR M5-.8 X 12          |
| 56  | P0580056 | CATCH                           |
| 57  | P0580057 | LATCH STUD M8-1.25 X 14         |
| 58  | P0580058 | TAP SCREW M4 X 8                |
| 59  | P0580059 | COVER UPPER FRONT               |
| 60  | P0580060 | SAW BLADE 6TPI X 93-1/2         |
| 61  | P0580061 | COVER UPPER BACK                |
| 62  | P0580062 | FLANGE SCREW M5-.8 X 8          |
| 63  | P0580063 | HINGE UPPER                     |
| 64  | P0580064 | STANDOFF HEX STUD               |
| 65  | P0580065 | SAW BLADE GUARD                 |
| 66  | P0580066 | SHIM                            |
| 67  | P0580067 | TAP SCREW M3.5 X 16             |
| 68  | P0580068 | BELT 18505J                     |
| 69  | P0580069 | LOWER HINGE                     |
| 70  | P0580070 | FLAT HD SCR M5-.8 X 10          |
| 71  | P0580071 | HEX BOLT M8-1.25 X 35           |
| 72  | P0580072 | FLAT WASHER 8MM                 |
| 73  | P0580073 | LOCK WASHER 8MM                 |
| 74  | P0580074 | HEX NUT M8-1.25                 |
| 75  | P0580075 | CORD CLAMP                      |
| 76  | P0580076 | PHLP HD SCR M5-.8 X 12          |
| 79  | P0580079 | GUIDE SUPPORT BRACKET           |
| 80  | P0580080 | THUMB SCREW M6-1 X 16           |
| 81  | P0580081 | UPPER SPACING SLEEVE            |
| 82  | P0580082 | BALL BEARING 6200 ZZ            |
| 83  | P0580083 | EXT RETAINING RING 10MM         |
| 84  | P0580084 | GUIDE POST                      |
| 85  | P0580085 | BLADE GUIDE SUPPORT             |
| 86  | P0580086 | GUIDE BLOCK 1/2" X 1/2" X 3/8"L |
| 87  | P0580087 | THUMB SCREW M6-1 X 16           |
| 88  | P0580088 | LOWER BLADE GUARD               |
| 89  | P0580089 | THUMB SCREW M6-1 X 12           |
| 90  | P0580090 | LEFT BLADE GUARD                |
| 91  | P0580091 | FLAT WASHER 6MM                 |
| 92  | P0580092 | HEX BOLT M6-1 X 10              |
| 93  | P0580093 | LOWER GUIDE SUPPORT             |
| 95  | P0580095 | HEX BOLT M6-1 X 20              |
| 96  | P0580096 | FLAT WASHER 6MM                 |
| 97  | P0580097 | TABLE                           |
| 98  | P0580098 | T24385 TABLE INSERT             |
| 99  | P0580099 | ROLL PIN 3 X 8                  |
| 100 | P0580100 | TABLE PIN                       |
| 101 | P0580101 | TRUNNION                        |

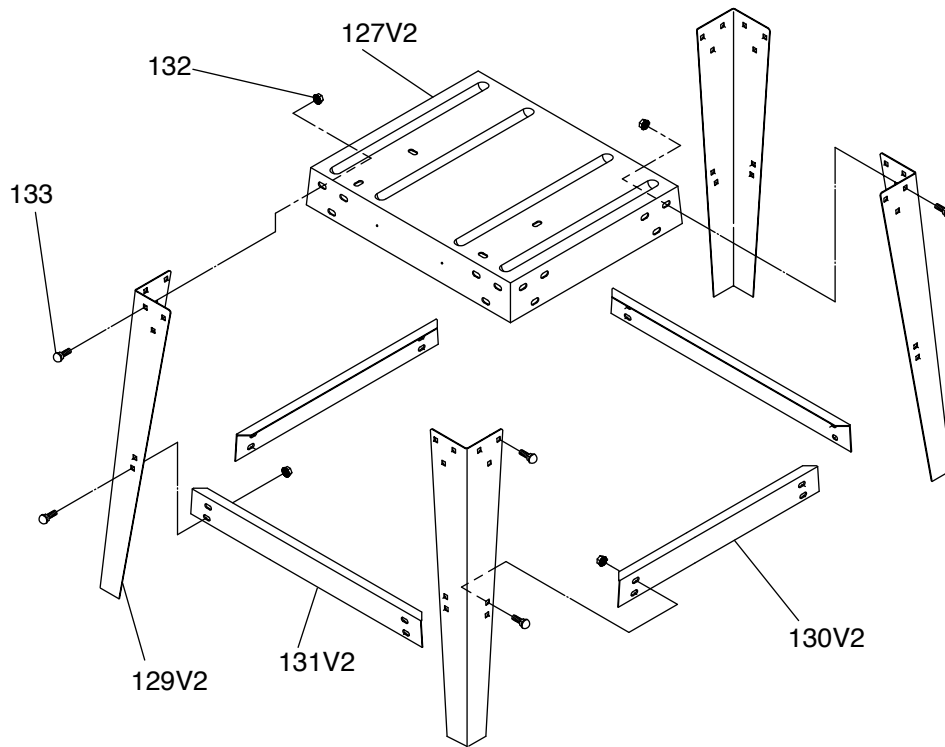


# Main Parts List (Cont.)

| REF   | PART #     | DESCRIPTION              |
|-------|------------|--------------------------|
| 102   | P0580102   | SCALE                    |
| 103   | P0580103   | TRUNNION CLAMP SHOE      |
| 104   | P0580104   | HEX BOLT M6-1 X 12       |
| 105   | P0580105   | TRUNNION SUPPORT BRACKET |
| 106   | P0580106   | HEX BOLT M8-1.25 X 30    |
| 108   | P0580108   | POINTER                  |
| 109   | P0580109   | FLANGE SCREW M5-.8 X 6   |
| 110   | P0580110   | KNOB M10-1.5             |
| 111   | P0580111   | HEX BOLT M10-1.5 X 50    |
| 112   | P0580112   | HEX BOLT M8-1.25 X 80    |
| 113   | P0580113   | HEX NUT M8-1.25          |
| 114   | P0580114   | MITER GAUGE ASSY         |
| 114-1 | P0580114-1 | MITER BODY               |
| 114-2 | P0580114-2 | MITER BAR                |
| 114-3 | P0580114-3 | POINTER                  |

| REF   | PART #     | DESCRIPTION                    |
|-------|------------|--------------------------------|
| 114-4 | P0580114-4 | WASHER PLASTIC                 |
| 114-5 | P0580114-5 | PHLP HD SCR M5-.8 X 6          |
| 114-6 | P0580114-6 | PIN                            |
| 114-7 | P0580114-7 | KNOB 1/4-20 X 3/4              |
| 115   | P0580115   | CAP SCREW M8-1.25 X 25         |
| 116   | P0580116   | LOCK WASHER 8MM                |
| 117   | P0580117   | FLAT WASHER 8MM                |
| 118   | P0580118   | STEEL BALL 5/16                |
| 119   | P0580119   | COMPRESSION SPRING 1 X 5.5 X 9 |
| 120   | P0580120   | SET SCREW M10-1.5 X 10         |
| 122   | P0580122   | CORD CLAMP                     |
| 123   | P0580123   | PHLP HD SCR M5-.8 X 12         |
| 124   | P0580124   | HEX BOLT M6 -1 X 16            |
| 125   | P0580125   | TENSION POINTER                |

## Stand

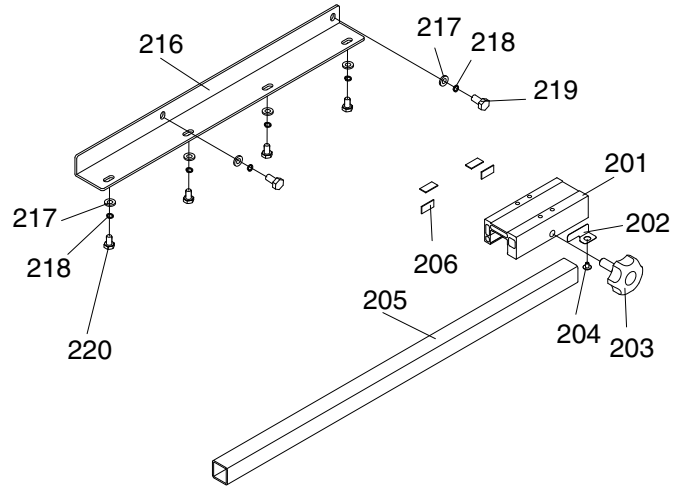
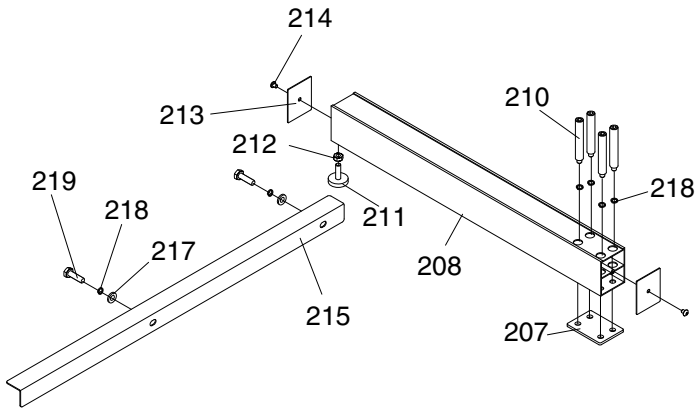


| REF   | PART #     | DESCRIPTION          |
|-------|------------|----------------------|
| 127V2 | P0580127V2 | BASE PLATE V2.03.25  |
| 129V2 | P0580129V2 | LEG V2.03.25         |
| 130V2 | P0580130V2 | SHORT BRACE V2.03.25 |

| REF   | PART #     | DESCRIPTION                |
|-------|------------|----------------------------|
| 131V2 | P0580131V2 | LONG BRACE V2.03.25        |
| 132   | P0580132   | FLANGE NUT M8-1.25         |
| 133   | P0580133   | CARRIAGE BOLT M8-1.25 X 16 |



# Fence



## REF PART # DESCRIPTION

|     |          |                               |
|-----|----------|-------------------------------|
| 201 | P0580201 | FENCE BASE                    |
| 202 | P0580202 | FENCE POINTER                 |
| 203 | P0580203 | HAND KNOB M10-1.5             |
| 204 | P0580204 | FLANGE SCREW M6-1 X 8         |
| 205 | P0580205 | FRONT SQUARE RAIL             |
| 206 | P0580206 | PAD                           |
| 207 | P0580207 | FENCE BRACKET                 |
| 208 | P0580208 | FENCE SUPPORT TUBE            |
| 210 | P0580210 | FENCE SUPPORT SCREW M6-1 X 13 |
| 211 | P0580211 | FENCE ADJUSTMENT SCREW        |

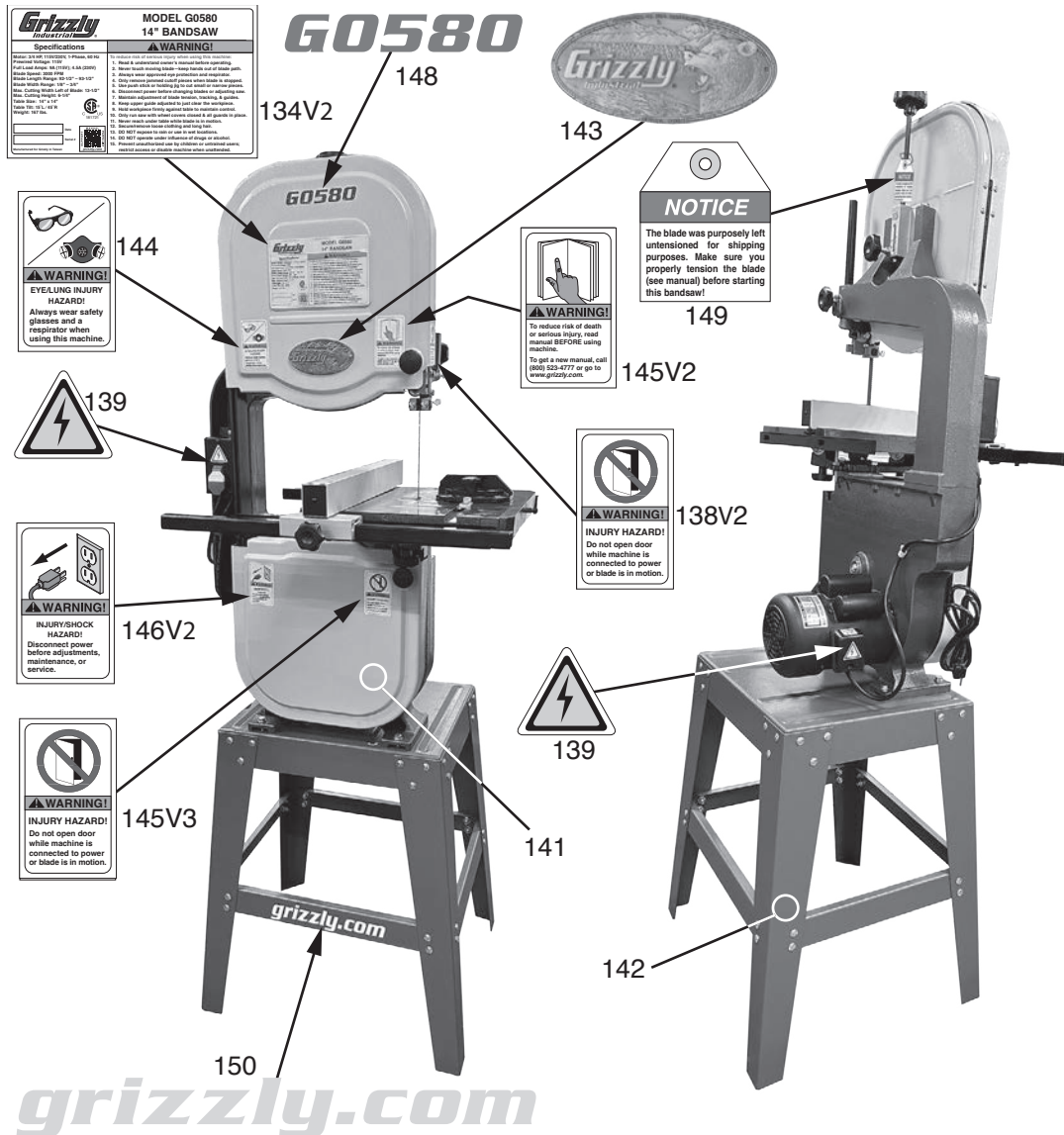
## REF PART # DESCRIPTION

|     |          |                    |
|-----|----------|--------------------|
| 212 | P0580212 | HEX NUT M6-1       |
| 213 | P0580213 | FENCE END CAP      |
| 214 | P0580214 | TAP SCREW M3.5 X 8 |
| 215 | P0580215 | REAR ANGLED RAIL   |
| 216 | P0580216 | FRONT RAIL         |
| 217 | P0580217 | FLAT WASHER 6MM    |
| 218 | P0580218 | LOCK WASHER 6MM    |
| 219 | P0580219 | HEX BOLT M6-1 X 20 |
| 220 | P0580220 | HEX BOLT M6-1 X 10 |

**Please Note:** We do our best to stock replacement parts whenever possible, but we cannot guarantee that all parts shown here are available for purchase. Call (800) 523-4777 or visit our online parts store at [www.grizzly.com](http://www.grizzly.com) to check for availability.



# Labels & Cosmetics



| REF   | PART #     | DESCRIPTION                      |
|-------|------------|----------------------------------|
| 134V2 | P0580134V2 | MACHINE ID LABEL CSA V2.03.12    |
| 138V2 | P0580138V2 | DOOR CLOSED BLADE LABEL V2.03.25 |
| 139   | P0580139   | ELECTRICITY LABEL                |
| 141   | P0580141   | TOUCH-UP PAINT, GRIZZLY PUTTY    |
| 142   | P0580142   | TOUCH UP PAINT, GRIZZLY GREEN    |
| 143   | P0580143   | GRIZZLY NAMEPLATE                |
| 144   | P0580144   | GLASSES/RESPIRATOR LABEL         |

| REF   | PART #     | DESCRIPTION                            |
|-------|------------|--|
| 145V2 | P0580145V2 | READ MANUAL LABEL V2.03.25             |
| 145V3 | P0580145V3 | DOOR CLOSED BLADE LABEL V3.03.25       |
| 146V2 | P0580146V2 | DISCONNECT POWER/INJURY LABEL V2.07.13 |
| 148   | P0580148   | MODEL NUMBER LABEL                     |
| 149   | P0580149   | TENSION BLADE TAG                      |
| 150   | P0580150   | GRIZZLY.COM LABEL                      |

## WARNING

Safety labels help reduce the risk of serious injury caused by machine hazards. If any label comes off or becomes unreadable, the owner of this machine **MUST** replace it in the original location before resuming operations. For replacements, contact (800) 523-4777 or [www.grizzly.com](http://www.grizzly.com).

