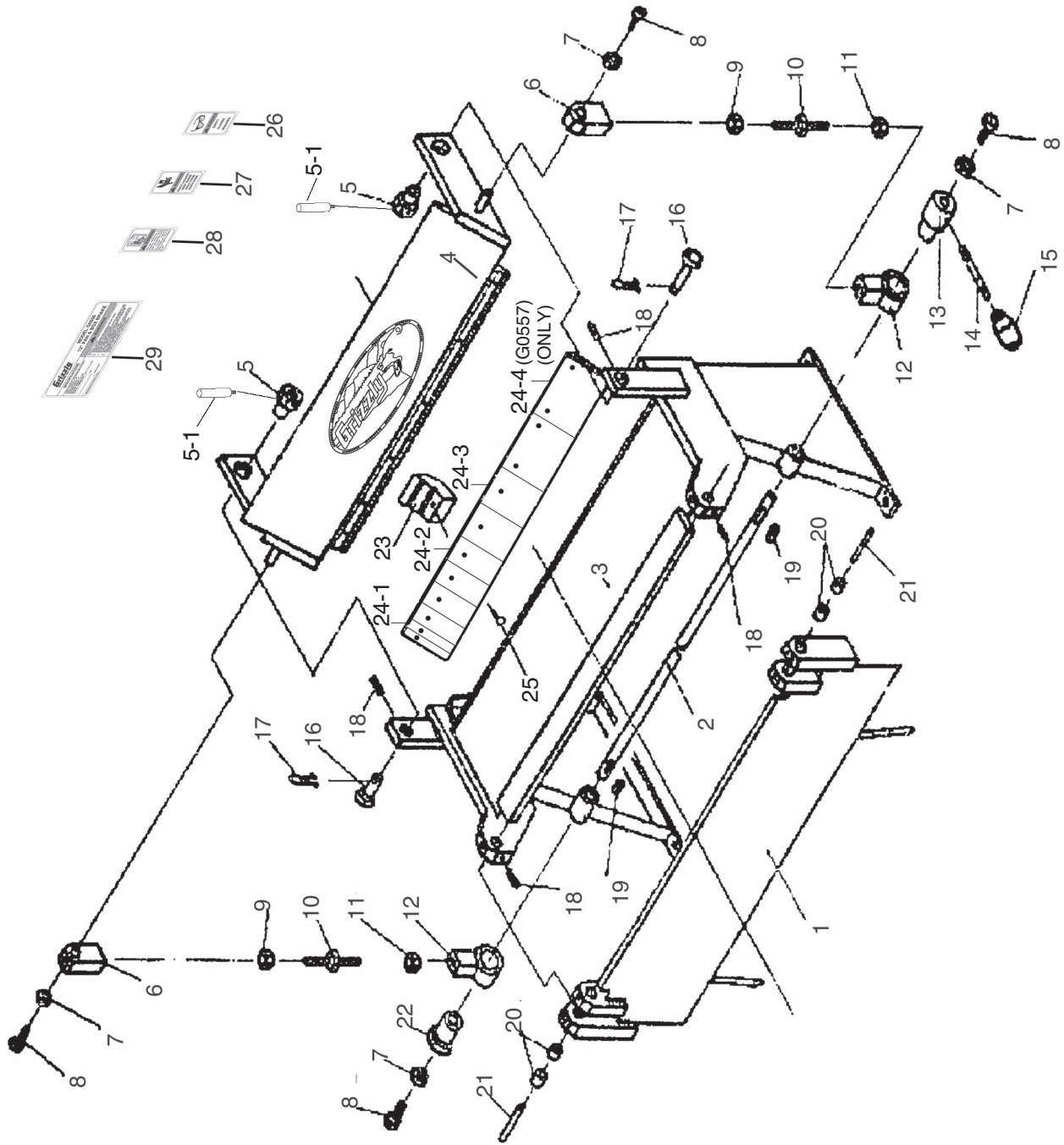


Model G0556/G0557 Parts Breakdown



Model G0556/G0557 Parts List

| REF | PART # | DESCRIPTION |
|-----|------------|-------------------------|
| 1 | P0556001 | APRON (G0556) |
| 1 | P0557001 | APRON (G0576) |
| 2 | P0556002 | SHAFT (G0556) |
| 2 | P0557002 | SHAFT (G0557) |
| 3 | P0556003 | BODY (G0556) |
| 3 | P0557003 | BODY (G0557) |
| 4 | P0556004 | HOLD DOWN ASSY. (G0556) |
| 4 | P0556004 | HOLD DOWN ASSY. (G0557) |
| 5 | P0556005 | UPPER ECCENTRIC |
| 5-1 | P0556005-1 | HANDLE M6-1 X 1-3/4 |
| 6 | P0556006 | CONNECTING BLOCK |
| 7 | PW03M | FLAT WASHER 6MM |
| 8 | PSB04M | CAP SCREW M6-1 X 10 |
| 9 | PN02M | HEX NUT M10-1.5 |
| 10 | P0556010 | TURNBUCKLE |
| 11 | PN02M | HEX NUT M10-1.5 |
| 12 | P0556012 | BUSHING |
| 13 | P0556013 | LOWER RIGHT ECCENTRIC |
| 14 | P0556014 | SCREW ROD |

| REF | PART # | DESCRIPTION |
|------|------------|--------------------------|
| 15 | P0556015 | HANDLE |
| 16 | P0556016 | PIN SHAFT |
| 17 | P0556017 | SPLIT PIN |
| 18 | PSS01M | SET SCREW M6-1 X 10 |
| 19 | PK47M | KEY 4 X 4 X 15MM |
| 20 | P0556020 | BUSHING |
| 21 | P0556021 | SMALL SHAFT |
| 22 | P0556022 | LOWER LEFT ECCENTRIC |
| 23 | P0556023 | T-NUT |
| 24-1 | P0556024-1 | FINGER 1" |
| 24-2 | P0556024-2 | FINGER 2" |
| 24-3 | P0556024-3 | FINGER 3" |
| 24-4 | P0557024-4 | FINGER 4" (G0557) |
| 25 | PSB14M | CAP SCREW M8-1.25 X 20 |
| 26 | P0556026 | SAFETY GLASSES LABEL |
| 27 | P0556027 | PINCH HAZARD LABEL |
| 28 | P0556028 | READ MANUAL LABEL |
| 29 | P0556029 | MACHINE ID LABEL (G0556) |
| 29 | P0557029 | MACHINE ID LABEL (G0557) |

