

Main Parts List

REF	PART #	DESCRIPTION
1	P0555X001	BASE
2	P0555X002	HEX BOLT M16-2 X 55
3	P0555X003	FLAT WASHER 16MM
4	P0555X004	HEX NUT M16-2
5	P0555X005	ALIGNMENT PIN
6	P0555X006	LOWER WHEEL SHAFT
7	P0555X007	BALL BEARING 6204-2RS
8	P0555X008	KEY 5 X 5 X 25
9	P0555X009	FENDER WASHER 8MM
10	P0555X010	CAP SCREW M8-1.25 X 16
11V2	P0555X011V2	MOTOR 1.5HP 1PH 110/220V V2.05.11
11V2-1	P0555X011V2-1	MOTOR FAN COVER V2.05.11
11V2-2	P0555X011V2-2	MOTOR FAN V2.05.11
11V2-3	P0555X011V2-3	CAPACITOR COVER V2.05.11
11V2-4	P0555X011V2-4	S CAPACITOR 200M 125V V2.05.11
11V2-5	P0555X011V2-5	MOTOR JUNCTION BOX V2.05.11
11V2-6	P0555X011V2-6	R CAPACITOR 30M 250V 1-3/8 X 2-3/8 V2.05.11
11V2-7	P0555X011V2-7	CENTRIFUGAL SWITCH V2.05.11
11V2-8	P0555X011V2-8	CENTRIFUGAL SWITCH W/CONTACT PLATE V2.05.11
11V2-9	P0555X011V2-9	BALL BEARING 6205ZZ
11V2-10	P0555X011V2-10	BALL BEARING 6203ZZ
11V2-11	P0555X011V2-11	CAPACITOR COVER V2.05.11
12	P0555X012	MOTOR PULLEY
13	P0555X013	SET SCREW M6-1 X 12
14V2	P0555X014V2	ON/OFF SWITCH 110/220V V2.05.11
15	P0555X015	TAP SCREW M3.5 X 12
16	P0555X016	FLAT WASHER 4MM
17	P0555X017	PHLP HD SCR M5-.8 X 16
18	P0555X018	TENSION INDICATOR
19	P0555X019	EXT TOOTH WASHER 5MM
20	P0555X020	SWITCH BOX
21	P0555X021	SWITCH BOX MOUNT PLATE
22	P0555X022	STRAIN RELIEF
23	P0555X023	PHLP HD SCR M5-.8 X 6
24	P0555X024	STRAIN RELIEF TYPE-2 M16-1.5
25V2	P0555X025V2	POWER CORD 14G 3C 6FT 5-15 V2.05.11
26	P0555X026	MOTOR CORD
27	P0555X027	STRAIN RELIEF
28	P0555X028	UPPER FRAME ARM
29	P0555X029	KNOB BOLT M10-1.5 X 30
30A	P0555X030A	UPPER WHEEL BRACKET V2.08.07
31	P0555X031	WING NUT 8MM
32	P0555X032	KNOB BOLT M8-1.25 X 45
33	P0555X033	TENSION KNOB BOLT ASSEMBLY
34	P0555X034	STEEL PIN
35	P0555X035	UPPER WHEEL SHAFT HINGE ASSY
35-1	P0555X035-1	UPPER WHEEL SHAFT
35-2	P0555X035-2	ROLL PIN 4 X 24
35-3	P0555X035-3	UPPER WHEEL SHAFT HINGE
38	P0555X038	COMPRESSION SPRING
39	P0555X039	SQUARE NUT M10-1.5
40	P0555X040	UPPER WHEEL

REF	PART #	DESCRIPTION
41	P0555X041	WHEEL TIRE
42	P0555X042	HEX NUT M12-1.75
43	P0555X043	INT RETAINING RING 35MM
44	P0555X044	BALL BEARING 6202LLU
45	P0555X045	LOWER WHEEL ASSEMBLY
46	P0555X046	FENDER WASHER 8MM
47	P0555X047	HEX BOLT M8-1.25 X 20 LH
48	P0555X048	LOWER WHEEL GUARD
49	P0555X049	GRIZZLY ROUND KNOB M8-1.25
50	P0555X050	INT TOOTH WASHER 8MM
51	P0555X051	LATCH STUD M8-1.25 X 14
55	P0555X055	PHLP HD SCR M5-.8 X 12
56	P0555X056	CATCH
57	P0555X057	ALIGNMENT BOLT
58	P0555X058	TAP SCREW M4 X 8
59	P0555X059	UPPER WHEEL COVER
60	P0555X060	SAW BLADE 6TPI 93-1/2 X 3/8" X .5MM
61A	P0555X061A	UPPER WHEEL BACK COVER V2.08.07
62	P0555X062	FLANGE SCREW M5-.8 X 8
63	P0555X063	UPPER WHEEL COVER HINGE
64	P0555X064	STANDOFF STUD
65	P0555X065	LEFT BLADE GUARD
66	P0555X066	TAP SCREW FLAT WASHER
67	P0555X067	TAP SCREW M3.5 X 16
68	P0555X068	RIBBED V-BELT 200J5
69	P0555X069	LOWER WHEEL COVER HINGE
70	P0555X070	FLAT HD SCR M5-.8 X 10
71	P0555X071	HEX BOLT M8-1.25 X 35
72	P0555X072	FLAT WASHER M8-1.25 X 18
73	P0555X073	LOCK WASHER 8MM
74	P0555X074	HEX NUT M8-1.25
75	P0555X075	CORD CLAMP
76	P0555X076	PHLP HD SCR M5-.8 X 8
77	P0555X077	WHEEL BRUSH
90	P0555X090	RIGHT UPPER BLADE GUARD
91	P0555X091	FLAT WASHER 6MM
92	P0555X092	HEX BOLT M6-1 X 10
99	P0555X099	PULLEY FLAT WASHER
115	P0555X115	CAP SCREW M8-1.25 X 25
116	P0555X116	LOCK WASHER 8MM
117	P0555X117	FENDER WASHER 8MM
118	P0555X118	STEEL BALL
119	P0555X119	COMPRESSION SPRING
120	P0555X120	SET SCREW M10-1.5 X 10
124	P0555X124	CORD CLAMP
125	P0555X125	PHLP HD SCR M5-.8 X 8
126	P0555X126	LOCK NUT M4-.7
130	P0555X130	SET SCREW M5-.8 X 10
131	P0555X131	UPPER LOCK COLLAR
132	P0555X132	FLAT WASHER 10MM
133	P0555X133	TENSION LEVER



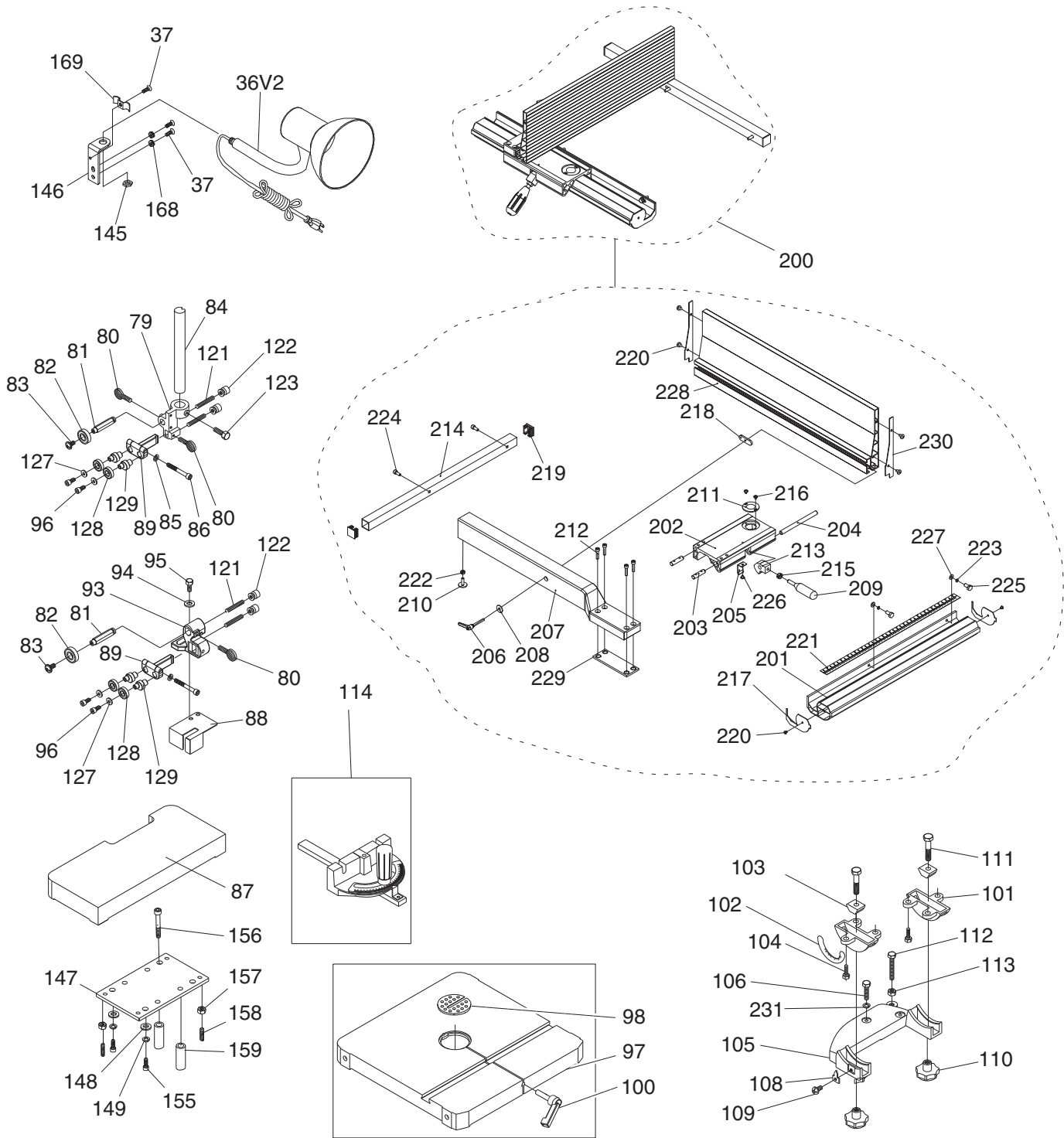
Main Parts List (cont.)

REF	PART #	DESCRIPTION
134	P0555X134	FLAT WASHER 8MM
135	P0555X135	BUSHING
136	P0555X136	BUTTON HD CAP SCR M8-1.25 X 20
137	P0555X137	SPACER
138	P0555X138	HEX BOLT M8-1.25 X 40
139	P0555X139	LOCK NUT M8-1.25
140	P0555X140	SUPPORT PLATE
141	P0555X141	PIVOT ARM
142	P0555X142	LOCK WASHER 8MM
143	P0555X143	CAP SCREW M8-1.25 X 20

REF	PART #	DESCRIPTION
144	P0555X144	SPACER 8 X 20MM
150	P0555X150	LOWER LOCK COLLAR
151	P0555X151	SET SCREW M5-.8 X 5
153	P0555X153	EXT TOOTH WASHER 5MM
154	P0555X154	FLAT WASHER 8MM
160	P0555X160	WHEEL PULLEY
161	P0555X161	BUTTON HD CAP SCR 5/16-18 X 3/4
162	P0555X162	LOCK WASHER 6MM
166	P0555X166	SET SCREW M5-.8 X 8



Table, Fence & Guides



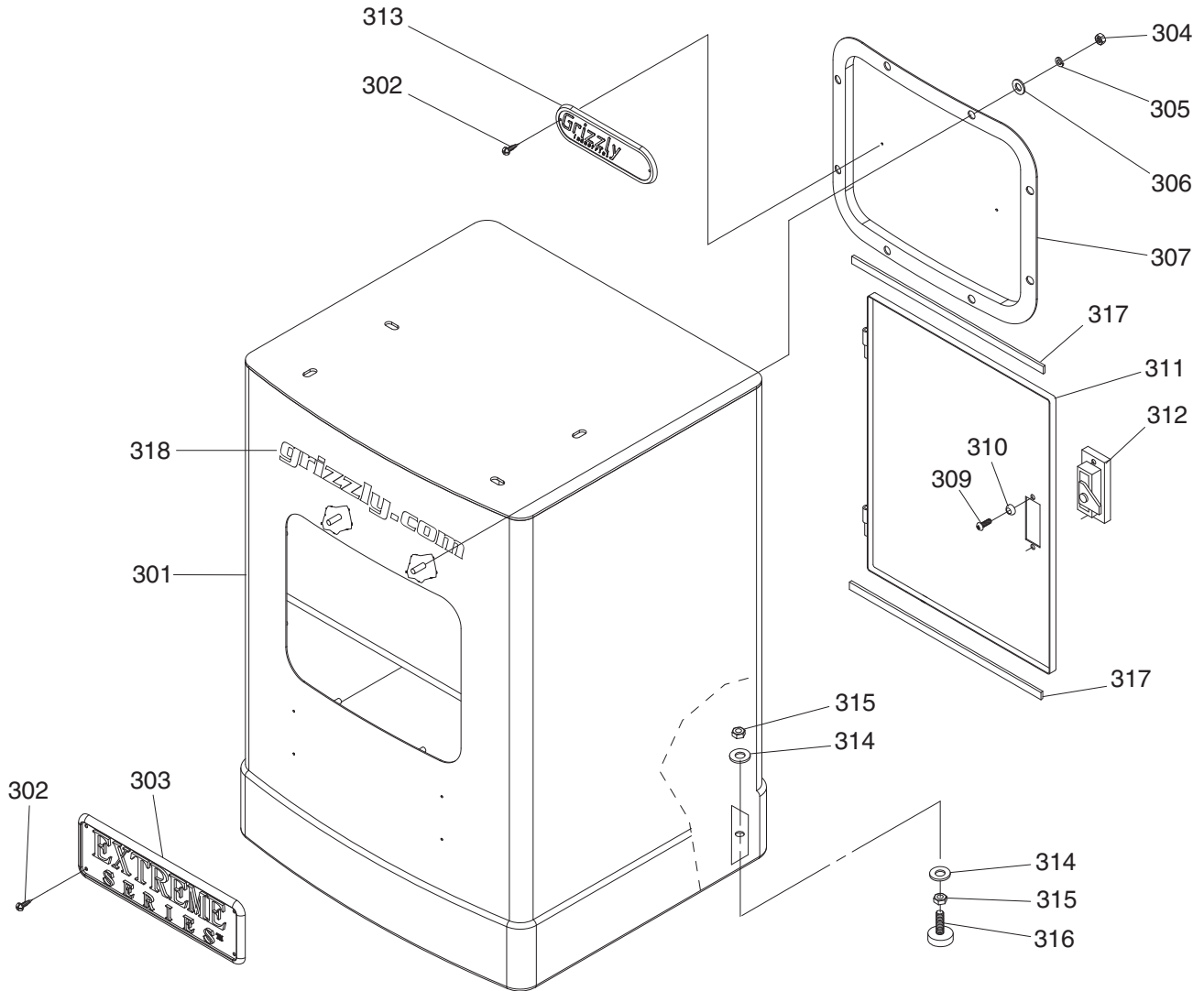
Table, Fence & Guides Parts List

REF	PART #	DESCRIPTION
36V2	P0555X036V2	LAMP ASSY W/POWER CORD V2.04.12
37	P0555X037	FLANGE SCREW M5-.8 X 8
79	P0555X079	UPPER BLADE GUIDE BRACKET
80	P0555X080	THUMB SCREW M6-1 X 16
81	P0555X081	GUIDE SUPPORT SHAFT
82	P0555X082	BALL BEARING 6000Z
83	P0555X083	FLANGE SCREW M6-1 X 8
84	P0555X084	GUIDE POST
85	P0555X085	LOCK WASHER 5MM
86	P0555X086	CAP SCREW M5-.8 X 40
87	P0555X087	TABLE EXTENSION
88	P0555X088	LOWER RIGHT BLADE GUARD
89	P0555X089	GUIDE BEARING SUPPORT BRACKET
93	P0555X093	LOWER BLADE GUIDE BRACKET
94	P0555X094	FLAT WASHER 6MM
95	P0555X095	HEX BOLT M6-1 X 20
96	P0555X096	CAP SCREW M5-.8 X 12
97	P0555X097	TABLE
98	P0555X098	TABLE INSERT
100	P0555X100	TABLE PIN
101	P0555X101	TRUNNION
102	P0555X102	SCALE
103	P0555X103	TRUNNION CLAMP SHOE
104	P0555X104	HEX BOLT M6-1 X 12
105	P0555X105	TRUNNION SUPPORT BRACKET
106	P0555X106	HEX BOLT M8-1.25 X 30
108	P0555X108	POINTER
109	P0555X109	FLANGE SCREW M5-.8 X 6
110	P0555X110	KNOB 10MM
111	P0555X111	TRUNNION HEX BOLT M10-1.5 X 50
112	P0555X112	HEX BOLT M8-1.25 X 80
113	P0555X113	HEX NUT M8-1.25
114	P0555X114	MITER GAUGE BODY ASSEMBLY
121	P0555X121	SET SCREW M8-1 X 35
122	P0555X122	MICRO ADJUSTING NUT
123	P0555X123	HEX BOLT M6-1 X 20
127	P0555X127	FLAT WASHER 5MM
128	P0555X128	BALL BEARING 608ZZ
129	P0555X129	ECCENTRIC BEARING SHAFT
145	P0555X145	LAMP NUT
146	P0555X146	LAMP BRACKET
147	P0555X147	LEVER BOARD

REF	PART #	DESCRIPTION
148	P0555X148	FLAT WASHER 6MM
149	P0555X149	LOCK WASHER 6MM
155	P0555X155	CAP SCREW M6-1 X 25
156	P0555X156	CAP SCREW M8-1.25 x 60
157	P0555X157	HEX NUT M8-1.25
158	P0555X158	SET SCREW M8-1.25 X 20
159	P0555X159	SPACER
168	P0555X168	EXT TOOTH WASHER 5MM
169	P0555X169	CORD CLAMP
200	P0555X200	FENCE KIT ASSEMBLY
201	P0555X201	FRONT FENCE RAIL
202	P0555X202	FENCE BASE
203	P0555X203	FENCE MOUNTING SHAFT
204	P0555X204	LOCK ROD
205	P0555X205	SPRING PIECE
206	P0555X206	LOCK KNOB M8-1.25 X 44
207	P0555X207	FENCE BRACKET
208	P0555X208	FLAT WASHER 8MM
209	P0555X209	LOCK HANDLE
210	P0555X210	FENCE STAND-OFF
211	P0555X211	SCALE WINDOW
212	P0555X212	CAP SCREW M6-1 X 25
213	P0555X213	LOCK CAM
214	P0555X214	REAR FENCE RAIL
215	P0555X215	HEX NUT M8-1.25
216	P0555X216	FLANGE SCREW M4-.7 X 6
217	P0555X217	FRONT RAIL END CAP
218	P0555X218	FENCE MOUNTING KEY
219	P0555X219	REAR RAIL END CAP
220	P0555X220	TAP SCREW M3.5 X 8
221	P0555X221	SCALE
222	P0555X222	HEX NUT M6-1
223	P0555X223	LOCK WASHER 6MM
224	P0555X224	CAP SCREW M6-1 X 16
225	P0555X225	HEX BOLT M6-1 X 20
226	P0555X226	FLANGE SCREW M4-.7 X 8
227	P0555X227	FLAT WASHER 6MM
228	P0555X228	FENCE
229	P0555X229	FENCE BRACKET MOUNTING PLATE
230	P0555X230	FENCE END CAP
231	P0555X231	LOCK WASHER 8MM



Stand

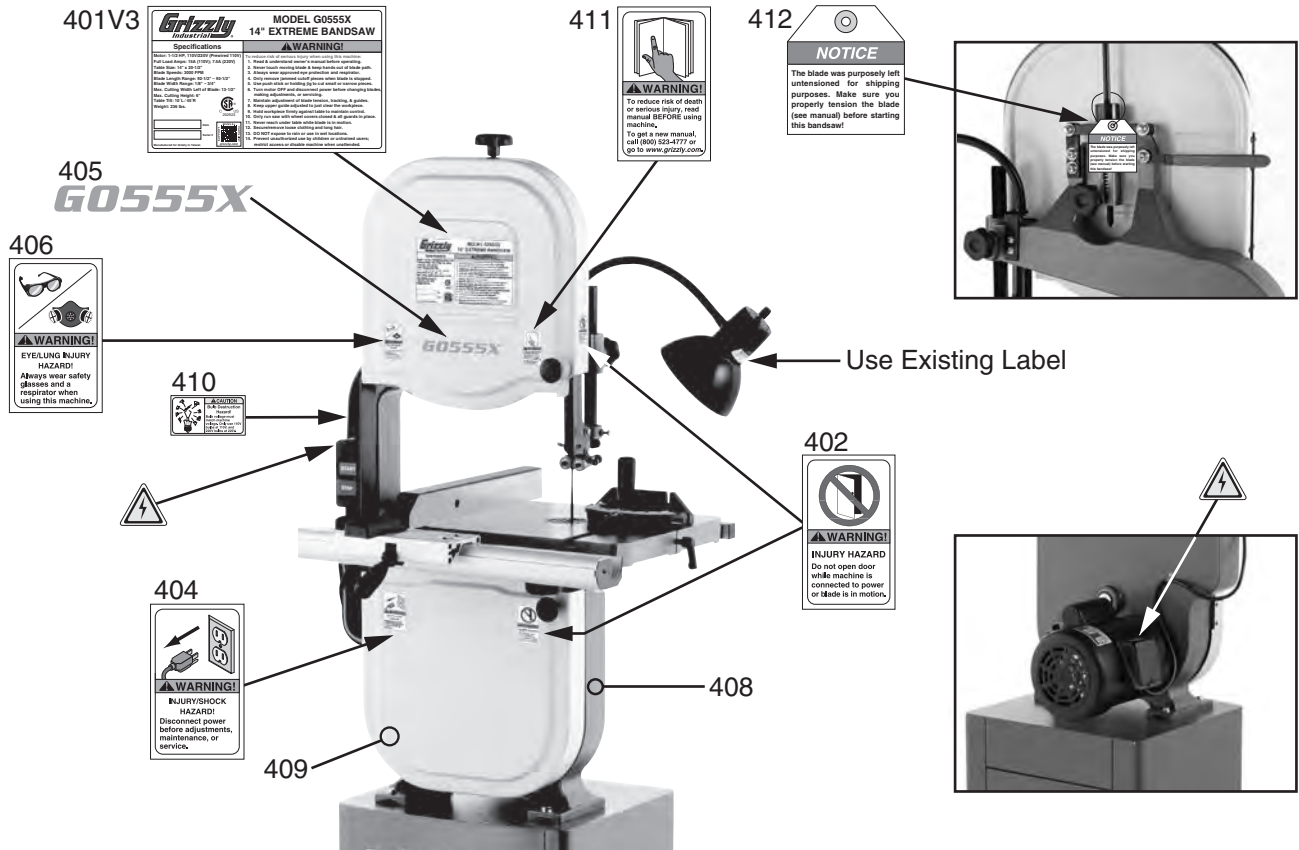


REF	PART #	DESCRIPTION
301	P0555X301	STAND
302	P0555X302	TAP SCREW M3.5 X 8
303	P0555X303	EXTREME SERIES LOGO
304	P0555X304	HEX NUT M6-1
305	P0555X305	LOCK WASHER 6MM
306	P0555X306	FLAT WASHER 6MM
307	P0555X307	FRONT STAND PANEL
309	P0555X309	PHLP HD SCR M4-.7 X 6
310	P0555X310	FLAT WASHER 4MM

REF	PART #	DESCRIPTION
311	P0555X311	DOOR
312	P0555X312	DOOR LATCH ASSEMBLY
313	P0555X313	GRIZZLY LOGO PLATE
314	P0555X314	FLAT WASHER 10MM
315	P0555X315	HEX NUT 3/8-16
316	P0555X316	STAND FOOT
317	P0555X317	DOOR CUSHION
318	P0555X318	GRIZZLY.COM LABEL



Labels & Cosmetics



REF	PART #	DESCRIPTION
401V3	P0555X401V3	MACHINE ID LABEL V3.07.13
402	P0555X402	DONT OPEN DOOR LABEL
404	P0555X404	INJURY/SHOCK HAZARD LABEL
405	P0555X405	MODEL NUMBER LABEL
406	P0555X406	GLASSES/RESPIRATOR LABEL

REF	PART #	DESCRIPTION
408	P0555X408	TOUCH-UP PAINT, GRIZZLY GREEN
409	P0555X409	TOUCH-UP PAINT, GRIZZLY PUTTY
410	P0555X410	BULB DESTRUCTION LABEL
411	P0555X411	READ MANUAL LABEL
412	P0555X412	TENSIONER NOTICE LABEL

⚠ WARNING

Safety labels help reduce the risk of serious injury caused by machine hazards. If any label comes off or becomes unreadable, the owner of this machine **MUST** replace it in the original location before resuming operations. For replacements, contact (800) 523-4777 or www.grizzly.com.

