

READ THIS FIRST



Model G0516

*****IMPORTANT UPDATE*****

For Machines Mfd. Since 4/17
and Owner's Manual Revised 9/09

For questions or help with this product contact Tech Support at (570) 546-9663 or techsupport@grizzly.com

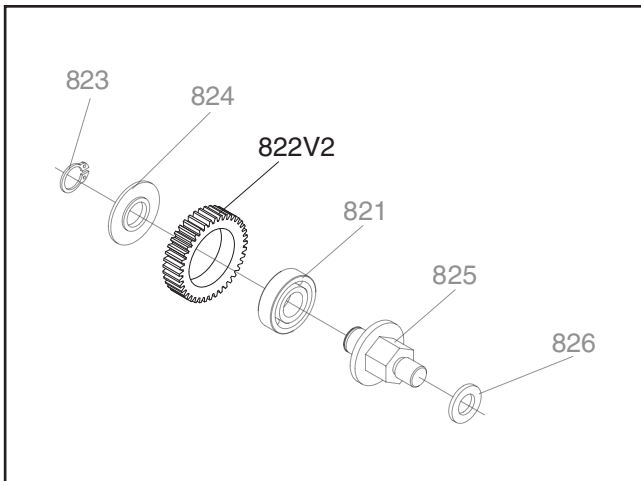
The following change was recently made to this machine since the owner's manual was printed:

- Steel gear now made of polyformaldehyde.

Aside from this information, all other content in the owner's manual applies and **MUST** be read and understood for your own safety. **IMPORTANT: Keep this update with the owner's manual for future reference.**

For questions or help, contact our Tech Support at (570) 546-9663 or techsupport@grizzly.com.

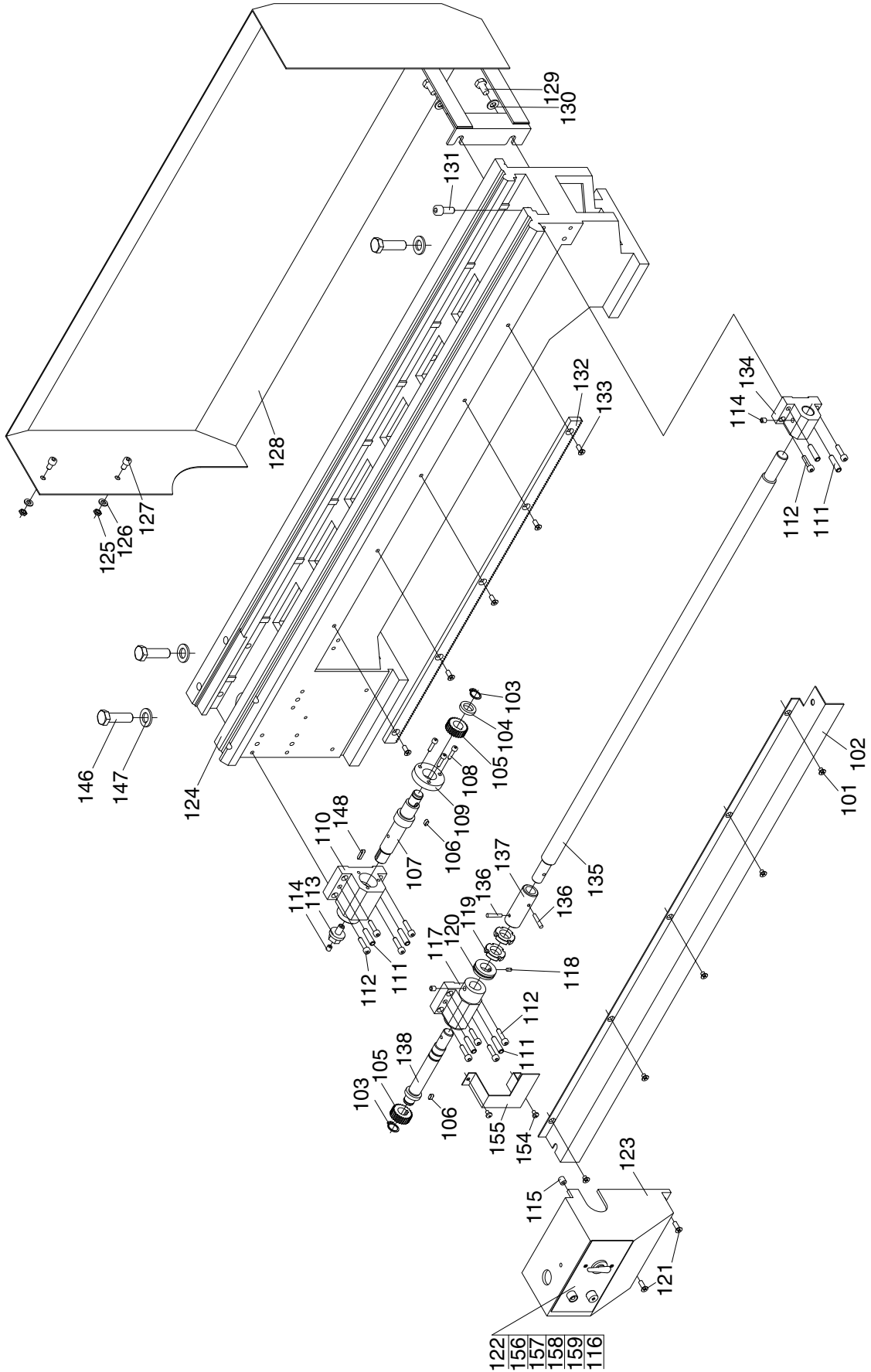
Revised Part



REF	PART #	DESCRIPTION
822V2	P0516822V2	GEAR 40T (POM) V2.04.17

COPYRIGHT © APRIL, 2017 BY GRIZZLY INDUSTRIAL, INC.
**WARNING: NO PORTION OF THIS MANUAL MAY BE REPRODUCED IN ANY SHAPE
OR FORM WITHOUT THE WRITTEN APPROVAL OF GRIZZLY INDUSTRIAL, INC.**
#MN18930 PRINTED IN CHINA

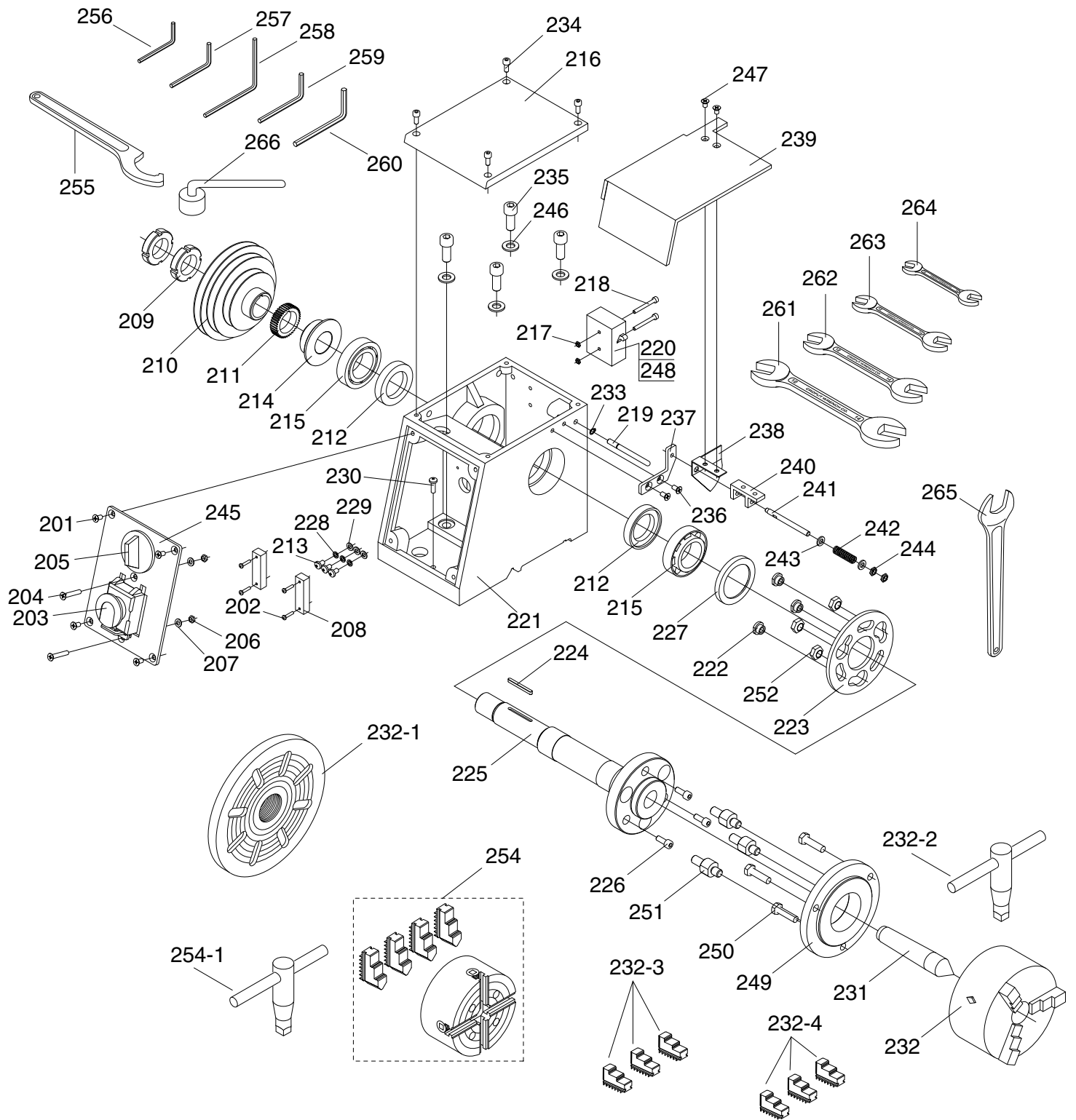
SECTION 8: PARTS



REF	PART #	DESCRIPTION
101	PS05M	PHLP HD SCR M5-.8 X 8
102	P0516102	LEADSCREW COVER
103	PR02M	EXT RETAINING RING 14MM
104	P0516104	CHANGE GEAR SPACER
105	P0516105	SMALL GEAR
106	PK29M	KEY 4 X 4 X 8
107	P0516107	CHANGE GEAR SHAFT
108	PS56M	PHLP HD SCR M4-.7 X 16
109	P0516109	ADJUSTING DISC
110	P0516110	SHAFT SUPPORT
111	P0516111	TAPER PIN 6 X 26
112	PS06M	PHLP HD SCR M5-.8 X 20
113	P0516113	SHOULDER BOLT 21 X 8 X 25
114	P0516114	OIL CUP 6MM
115	P0516115	BLOCK FOR SWITCH
116	PS07M	PHLP HD SCR M4-.7 X 8
117	P0516117	LEADSCREW SUPPORT (L)
118	PS07M	PHLP HD SCR M4-.7 X 8
119	P0516119	ROUND NUT M16 X 1.5
120	P0516120	STEEL WASHER 30 X 16 X 4
121	PS57M	PHLP HD SCR M5-.8 X 14
122	P0516122	SWITCH LABEL
123	P0516123	SHAFT COVER
124	P0516124	BED

REF	PART #	DESCRIPTION
125	PN01M	HEX NUT M6-1
126	PW03M	FLAT WASHER 6MM
127	PB04M	HEX BOLT M6-1 X 10
128	P0516128	SPLASH GUARD
129	PS16M	PHLP HD SCR M8-1.25 x 16
130	PW01M	FLAT WASHER 8MM
131	PS04M	PHLP HD SCR M8-1.25 X 20
132	P0516132	RACK
133	PS08M	PHLP HD SCR M5-.8 X 12
134	P0516134	LEADSCREW SUPPORT (R)
135	P0516135	LONG LEADSCREW 14 X 16 X 79.2
136	PRP56M	ROLL PIN 4 X 25
137	P0516137	SLEEVE JOINT
138	P0516138	JOINT SHAFT
146	PB35M	HEX BOLT M12-1.75 X 40
147	PW06M	FLAT WASHER 12MM
148	PK37M	KEY 4 X 4 X 16
154	PS56M	PHLP HD SCR M4-.7 X 16
155	P0516155	SMALL GEAR PROTECTOR
156	P0516156	GREEN LAMP
157	P0516157	FUSE BOX
158	P0516158	LATHE FUSE F25A 250V
159V2	P0516159 V2	ROTARY SWITCH (3-POS) V2.01.03

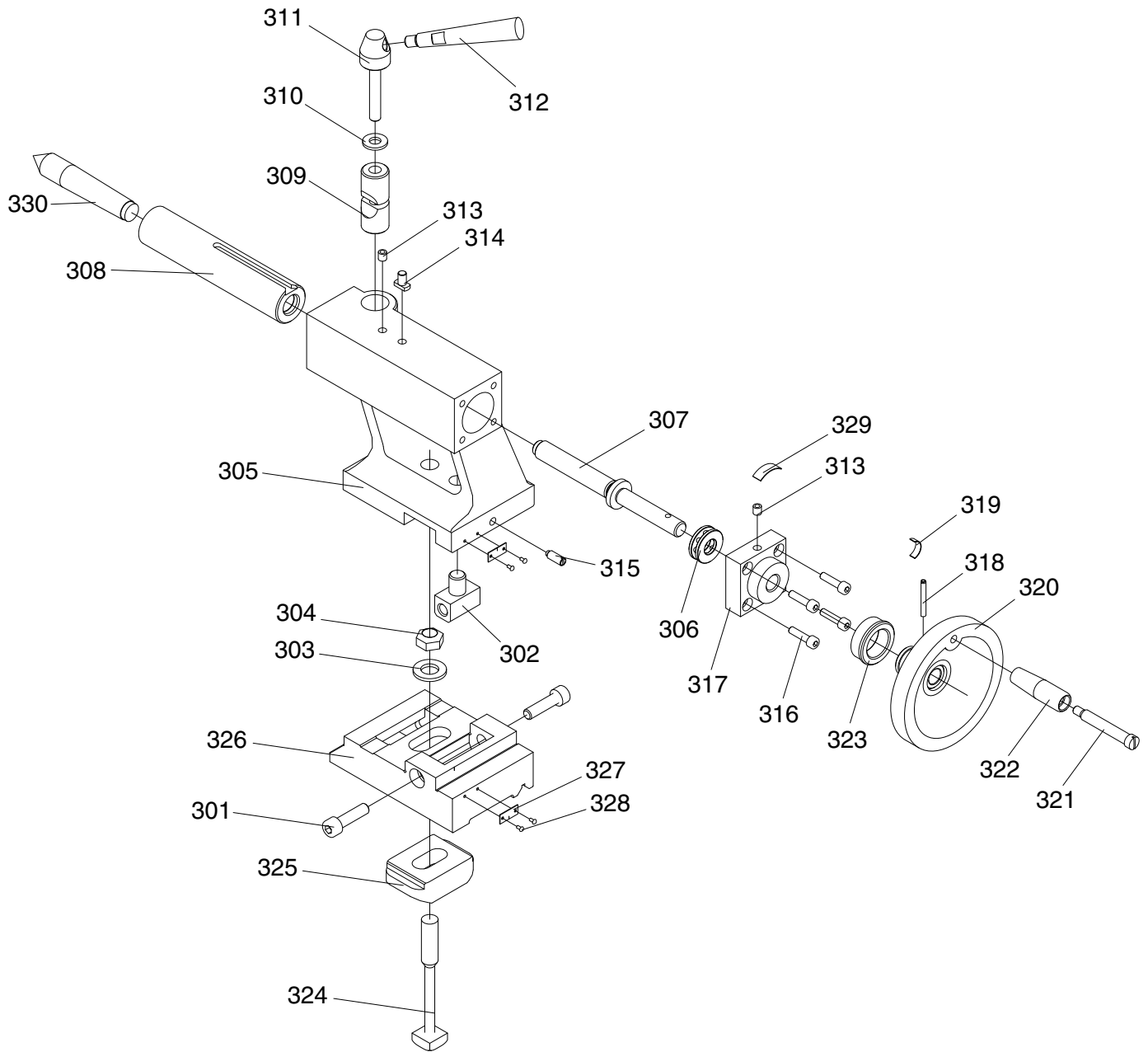




REF	PART #	DESCRIPTION
201	PS09M	PHLP HD SCR M5-.8 X 10
202	PS59M	PHLP HD SCR M3-.5 X 14
203	P0516203	POWER SWITCH W/STOP
204	PS60M	PHLP HD SCR M5-.8 X 30
205	P0516205	FWD/REV SWITCH
206	PN06M	HEX NUT M5-.8
207	PW02M	FLAT WASHER 5MM
208	P0516208	CONNECTOR
209	P0516209	ROUND NUT M27-1.5
210	P0516210	SPINDLE PULLEY
211	P0516211	SPINDLE GEAR
212	P0516212	OIL RING
213	PS05M	PHLP HD SCR M5-.8 X 8
214	P0516214	SPINDLE SPACER
215	P32007	TAPERED BEARING 32007
216	P0516216	SPINDLE BOX COVER
217	PN04M	HEX NUT M4-.7
218	PS25M	PHLP HD SCR M4-.7 X 35
219	P0516219	PIN SHAFT
220	P0516220	BOX FOR MICRO SWITCH
221	P0516221	HEAD STOCK BODY
222	P0516222	FIXING NUT 16 X 11 X 8
223	P0516223	ROTATABLE SPACER
224	PK68M	KEY 4 X 4 X 40
225	P0516225	SPINDLE
226	PS11M	PHLP HD SCR M6-1 X 16
227	P0516227	FRONT BEARING COVER
228	PLW01M	LOCK WASHER 5MM
229	PTLW02M	EXT TOOTH WASHER 5MM
230	PS40M	PHLP HD SCR M5-.8 X 16
231	P0516231	SPINDLE CENTER MT3
232	P0516232	3-JAW CHUCK D-125MM
232-1	P0516232-1	FACEPLATE 8-1/2"
232-2	P0516232-2	3-JAW CHUCK KEY
232-3	P0516232-3	OUTSIDE JAWS FOR 3-JAW CHUCK

REF	PART #	DESCRIPTION
232-4	P0516232-4	INSIDE JAWS FOR 3-JAW CHUCK
233	PR04M	EXT RETAINING RING 6MM
234	PS08M	PHLP HD SCR M5-.8 X 12
235	PS41M	PHLP HD SCR M10-1.5 X 25
236	PS09M	PHLP HD SCR M5-.8 X 10
237	P0516237	SUPPORT
238	P0516238	LIMIT BLOCK
239	P0516239	CHUCK GUARD
240	P0516240	FIXING SUPPORT
241	P0516241	SMALL SHAFT
242	P0516242	COMPRESS SPRING 8.2 X 1.4 X 33
243	PW03M	FLAT WASHER 6MM
244	PN01M	HEX NUT M6-1
245	P0516245	PLATE FOR SWITCHES
246	PW04M	FLAT WASHER 10MM
247	PS05M	PHLP HD SCR M5-.8 X 8
248	P0516248	MICROSWITCH
249	P0516249	3-JAW CHUCK FLANGE
250	PB26M	HEX BOLT M8-1.25 X 30
251	P0516251	PLUG BOLT 19.5 X 17 X 45
252	PN02M	HEX NUT M10-1.5
254	P0516254	4-JAW CHUCK WITH JAWS
254-1	P0516254-1	4-JAW CHUCK KEY
255	P0516255	SPANNER WRENCH 45-52
256	PAW03M	HEX WRENCH 3MM
257	PAW04M	HEX WRENCH 4MM
258	PAW05M	HEX WRENCH 5MM
259	PAW06M	HEX WRENCH 6MM
260	PAW08M	HEX WRENCH 8MM
261	PWR1719	WRENCH 17 X 19
262	PWR1214	COMBO WRENCH 12/14MM
263	PWR810	WRENCH 8 X 10
264	P0516264	WRENCH 5.5/7MM
265	P0516265	WRENCH 36MM
266	P0516266	TOOLPOST WRENCH

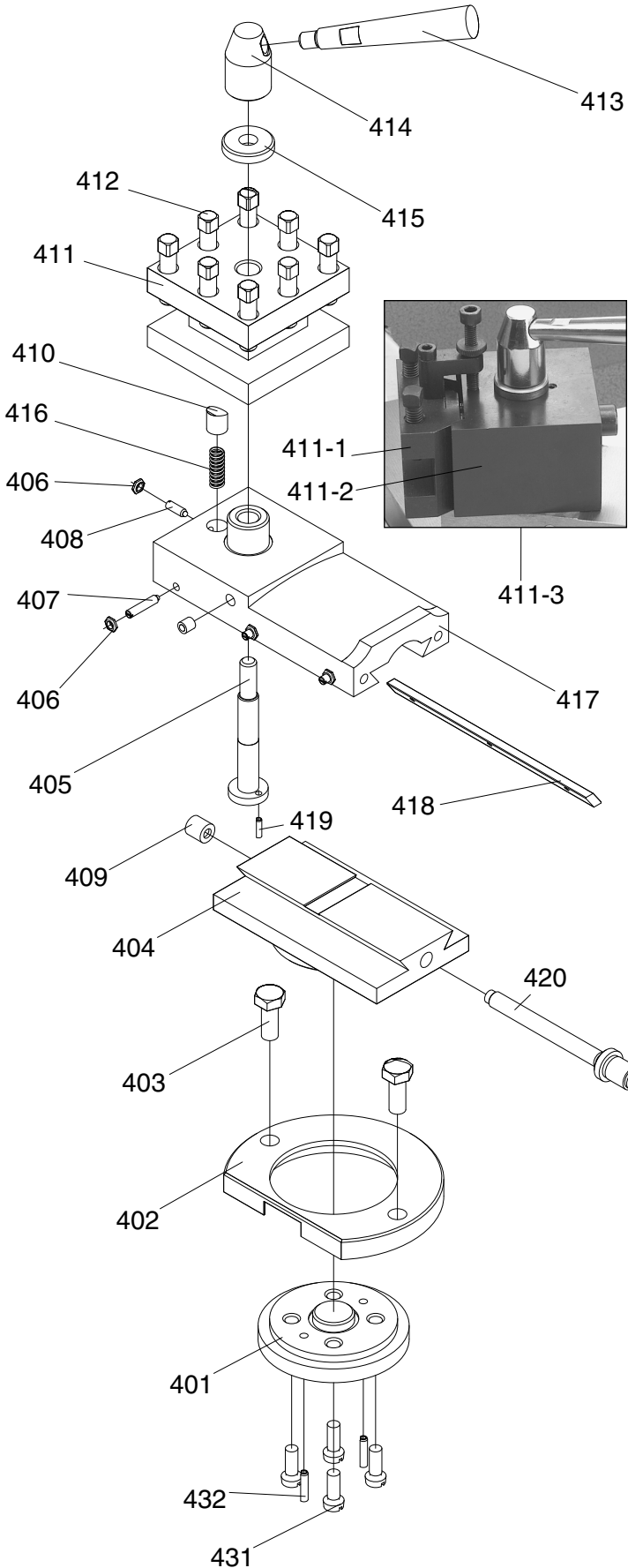




REF	PART #	DESCRIPTION
301	PS28M	PHLP HD SCR M8-1.25 X 30
302	P0516302	TAILSTOCK T-NUT 30 X 16 X 32
303	PW06M	FLAT WASHER 12MM
304	PN09M	HEX NUT M12-1.75
305	P0516305	TAILSTOCK BODY
306	P51101	THRUST BEARING 51101
307	P0516307	TAILSTOCK LEADSCREW
308	P0516308	TAILSTOCK SLEEVE
309	P0516309	TUBULAR CLAMP
310	PW01M	FLAT WASHER 8MM
311	P0516311	CLAMP BOLT 22 X 13.3 X 74
312	P0516312	HANDLE
313	P0516313	OIL CUP
314	P0516314	T-TAP FLAT KEY 12 X 12 X 7
315	PS11M	PHLP HD SCR M6-1 X 16

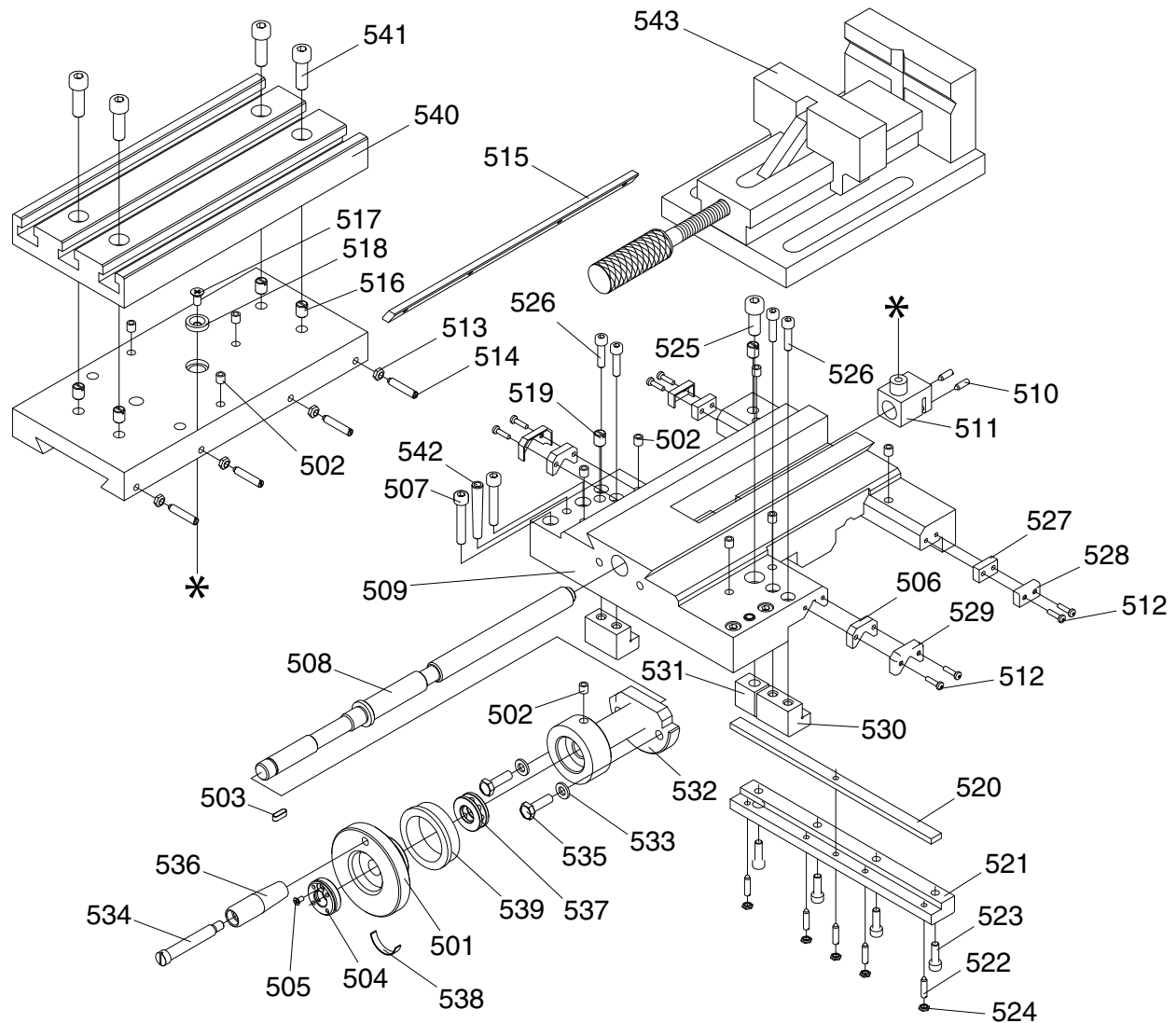
REF	PART #	DESCRIPTION
316	PS06M	PHLP HD SCR M5-.8 X 20
317	P0516317	TAILSTOCK END COVER
318	P0516318	CYLINDER PIN 4 X 30
319	P0516319	SPRING BOW
320	P0516320	HAND WHEEL
321	P0516321	HANDLE BOLT 60.5 X 10 X 8
322	P0516322	HANDLE SLEEVE
323	P0516323	INDEX RING
324	P0516324	SQ HD BOLT M12-1.75 X 100
325	P0516325	TAILSTOCK CLAMP PLATE
326	P0516326	BASE
327	P0516327	ZERO POSITION SCALE
328	P0516328	SCALE RIVET
329	P0516329	INDICATOR SCALE
330	P0516330	TAILSTOCK CENTER MT2





REF	PART #	DESCRIPTION
401	P0516401	CUTTER REST BASE
402	P0516402	CLAMP DISC
403	PB09M	HEX BOLT M8-1.25 X 20
404	P0516404	CUTTER REST DISC
405	P0516405	CUTTER REST BOLT 78 X 19 X 7
406	PN04M	HEX NUT M4-.7
407	PSS50M	SET SCREW M4-.7 X 20
408	PS02M	PHLP HD SCR M4-.7 X 12
409	P0516409	OIL CUP 10MM
410	P0516410	FIXING PIN
411	P0516411	SQUARE CUTTER REST
411-1	P0516411-1	REMOVABLE TOOL HOLDER
411-2	P0516411-2	TOOL HOLDER
411-3	P0516411-3	QUICK CHANGE TOOL POST ASSY
412	PS28M	PHLP HD SCR M8-1.25 X 30
413	P0516312	HANDLE
414	P0516414	HANDLE BASE
415	P0516415	HANDLE SPACER
416	P0516416	SPRING 0.5 X 3.5 X 17MM
417	P0516417	CUTTER REST CARRIAGE
418	P0516418	PAD IRON GIB
419	PRP44M	ROLL PIN 3 X 10
420	P0516420	CARRIAGE LEAD SCREW 120 X 16 X 65
421	PK39M	KEY 3 X 3 X 10
422	P0516114	OIL CUP 6MM
423	P0516423	LEADSCREW SUPPORT
424	PS40M	PHLP HD SCR M5-.8 X 16
425	P0516425	SPRING PLATE
426	P0516426	HANDLE
427	PN03M	HEX NUT M8-1.25
428	PW01M	FLAT WASHER 8MM
429	P0516429	CARRIAGE HANDWHEEL
430	P0516430	INDEX RING
431	PS11M	PHLP HD SCR M6-1 X 16
432	P0516432	CYLINDER PIN 4 X 16

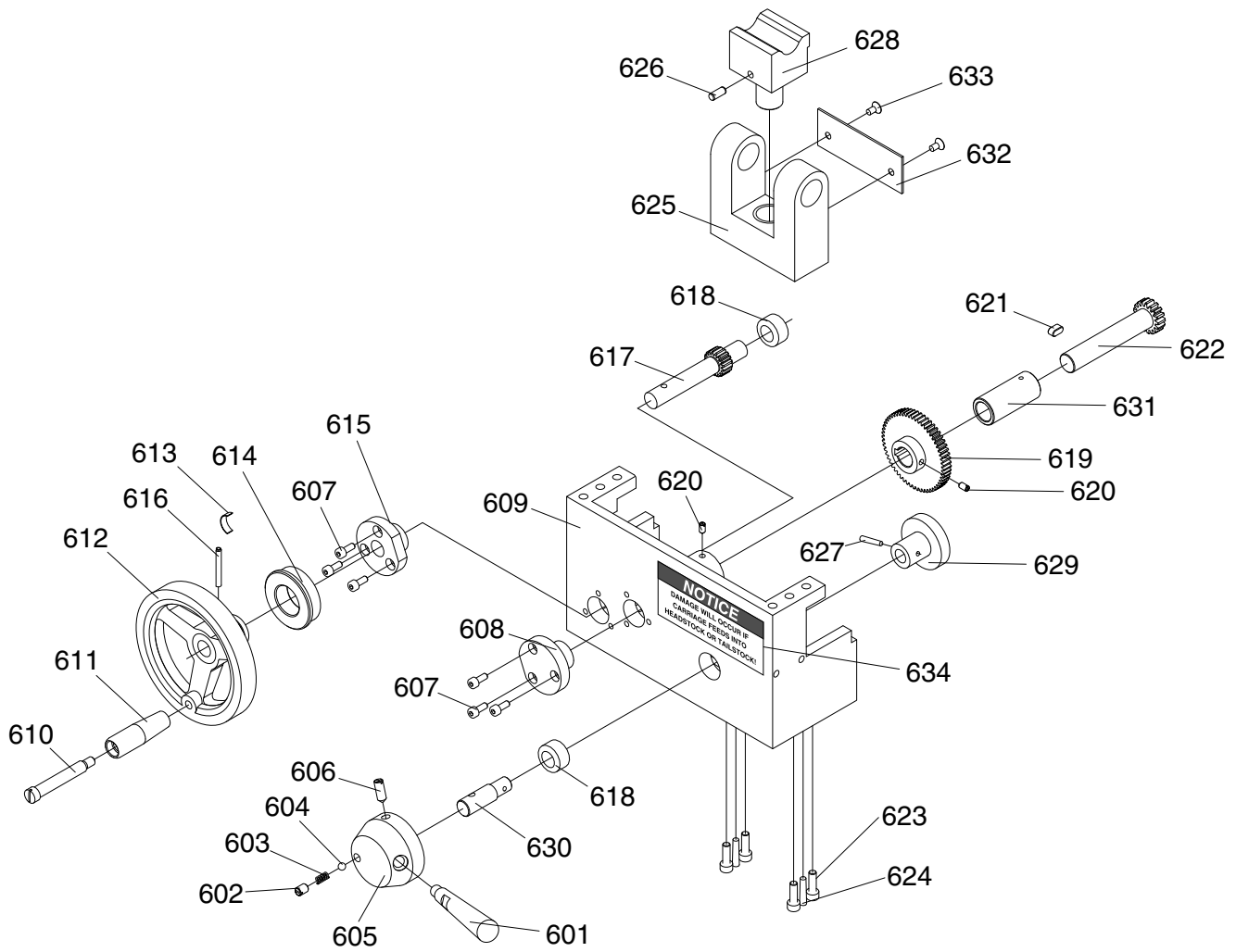




REF	PART #	DESCRIPTION
501	P0516501	HAND WHEEL
502	P0516114	OIL CUP 6MM
503	PK69M	KEY 4 X 4 X 12
504	P0516504	ROUND NUT 26 X 12 X 8
505	PS12M	PHLP HD SCR M3-.5 X 6
506	P0516506	OIL-STOPPING FELT
507	PS31M	PHLP HD SCR M6-1 X 35
508	P0516508	SADDLE LEADSCREW
509	P0516509	SADDLE
510	PS02M	PHLP HD SCR M4-.7 X 12
511	P0516511	CLEARANCE NUT 23 X 31 X 14
512	PS50M	PHLP HD SCR M3-.5 X 12
513	PN06M	HEX NUT M5-.8
514	P0516514	DOG POINT SET SCREW M5 X 25
515	P0516515	PAD IRON GIB
516	P0516516	CROSS SLIDE
517	PS09M	PHLP HD SCR M5-.8 X 10
518	P0516518	CROSS SLIDE SPACER
519	PS39M	PHLP HD SCR M8-1.25 X 10
520	P0516520	GIB STRIP
521	P0516521	REAR-CLAMP PLATE
522	PS56M	PHLP HD SCR M4-.7 X 16

REF	PART #	DESCRIPTION
523	PS40M	PHLP HD SCR M5-.8 X 16
524	PN04M	HEX NUT M4-.7
525	PS04M	PHLP HD SCR M8-1.25 X 20
526	PS06M	PHLP HD SCR M5-.8 X 20
527	P0516527	OIL-STOPPING FELT
528	P0516528	PROTECTING PANEL
529	P0516529	PROTECTING PANEL
530	P0516530	FRONT-CLAMP PLATE
531	P0516531	BRAKING PLATE
532	P0516532	LEADSCREW SUPPORT
533	PW03M	FLAT WASHER 6MM
534	P0516534	HANDLE BOLT 60.5 X 10 X 8
535	PB08M	HEX BOLT M6-1 X 20
536	P0516536	HANDLE SLEEVE
537	P8101	THRUST BEARING 8101
538	P0516538	SPRING PLATE
539	P0516539	INDEX RING
540	P0516540	MILLING TABLE
541	PSB13M	CAP SCREW M8-1.25 X 30
542	PRP58M	ROLL PIN 6 X 45
543	P0516543	MILLING VISE

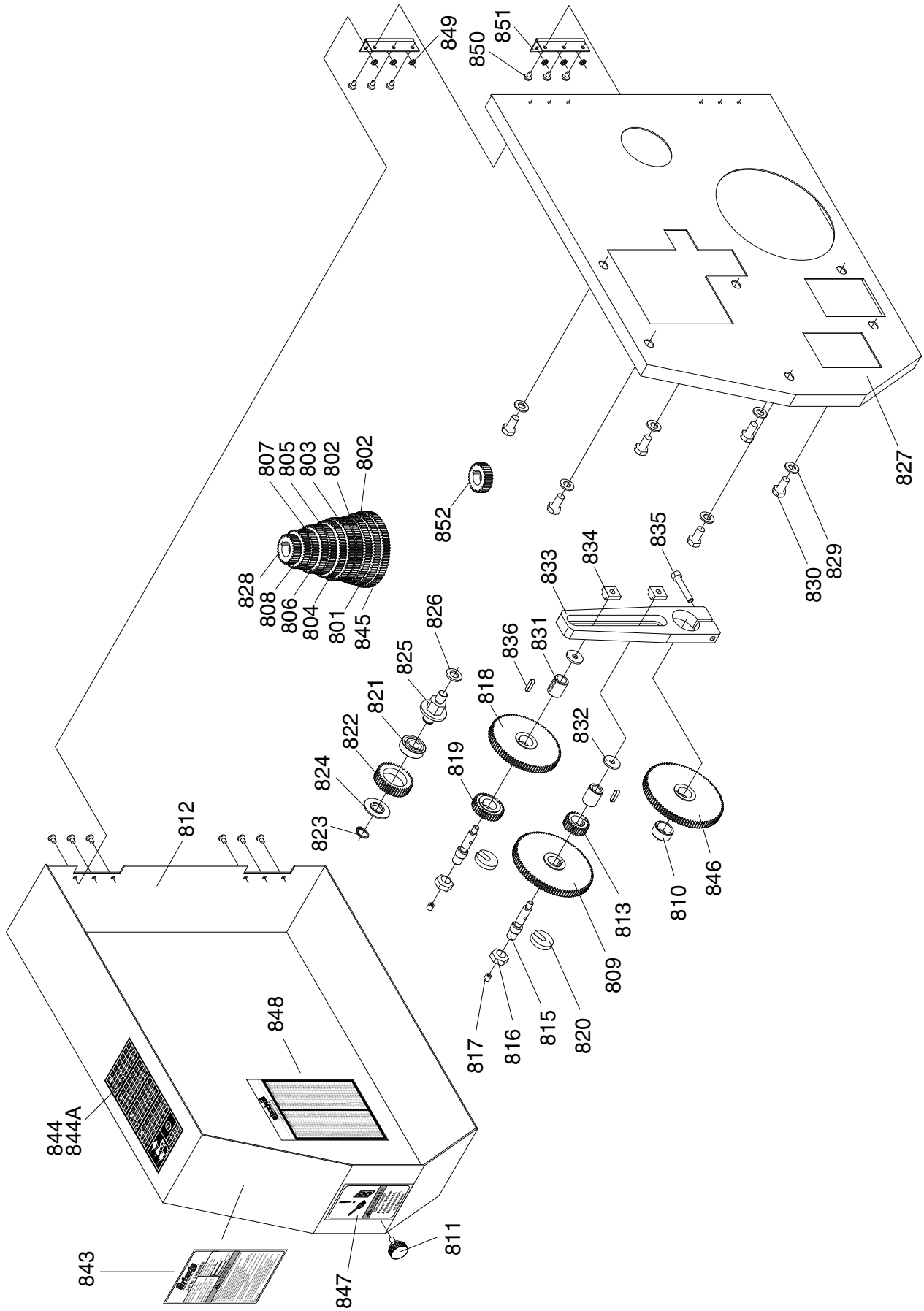




REF	PART #	DESCRIPTION
601	P0516601	HANDLE
602	PS03M	PHLP HD SCR M6-1 X 8
603	P0516603	COMPRESS SPRING 6.1 X 4 X 2.5
604	P0516604	STEEL BALL 5MM
605	P0516605	HANDLE SEAT
606	PS11M	PHLP HD SCR M6-1 X 16
607	PS38M	PHLP HD SCR M4-.7 X 10
608	P0516608	END COVER
609	P0516609	APRON BODY
610	P0516610	HANDLE BOLT 60.5 X 10 X 8
611	P0516611	HANDLE SLEEVE
612	P0516612	HAND WHEEL
613	P0516613	SPRING PLATE
614	P0516614	INDEX RING
615	P0516615	SMALL SHAFT SLEEVE
616	PRP73M	ROLL PIN 4 X 30
617	P0516617	SMALL GEAR SHAFT

REF	PART #	DESCRIPTION
618	P0516618	SHAFT SLEEVE
619	P0516619	GEAR
620	PS07M	PHLP HD SCR M4-.7 X 8
621	PK06M	KEY 5 X 5 X 10
622	P0516622	GEAR SHAFT
623	PS40M	PHLP HD SCR M5-.8 X 16
624	PRP20M	ROLL PIN 4 X 22
625	P0516625	HALF NUT BASE 110 X 79.5
626	PRP59M	ROLL PIN 5 X 12
627	PRP42M	ROLL PIN 3 X 20
628	P0516628	HALF NUT 40 X 78 X 58.5
629	P0516629	SLOTTED DISC
630	P0516630	ROTATING SHAFT
631	P0516631	SHAFT SLEEVE
632	P0516632	MOVING PLATE
633	PS07M	PHLP HD SCR M4-.7 X 8
634	P0516634	CARRIAGE FEED NOTICE

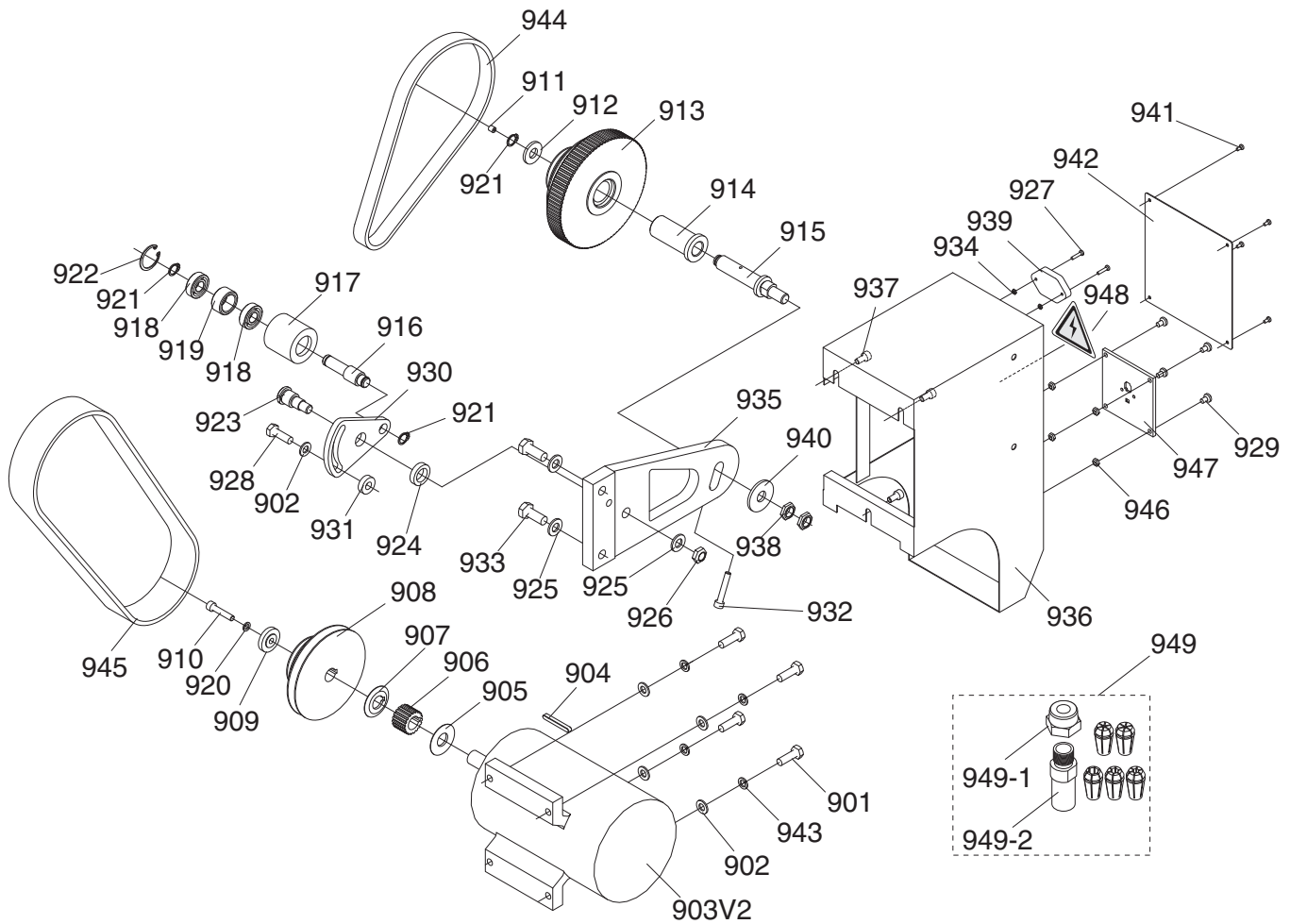




REF	PART #	DESCRIPTION
801	P0516801	GEAR Z:72
802	P0516802	GEAR Z:70
803	P0516803	GEAR Z:68
804	P0516804	GEAR Z:66
805	P0516805	GEAR Z:60
806	P0516806	GEAR Z:50
807	P0516807	GEAR Z:48
808	P0516808	GEAR Z:45
809	P0516809	GEAR Z:90
810	P0516810	PIVOT SHAFT SPACER
811	P0516811	KNURLING BOLT 20 X 5 X 23
812	P0516812	DRIVE/GEAR BOX COVER
813	P0516813	GEAR Z:30T
815	P0516815	ADJUSTABLE SHAFT
816	PN09M	HEX NUT M12-1.75
817	P0516114	OIL CUP 6MM
818	P0516818	GEAR Z:80
819	P0516819	GEAR Z:35
820	P0516820	OPEN LOCK WASHER 25 X 7 X 5
821	P6001	BALL BEARING 6001ZZ
822	P0516822	GEAR Z:40
823	PR03M	EXT RETAINING RING 12MM
824	P0516824	FRONT SHAFT SPACER

REF	PART #	DESCRIPTION
825	P0516825	FIXED-SHAFT BOLT 30 X 10 X 41
826	P0516826	REAR SHAFT SPACER
827	P0516827	SUPPORT PLATE
828	P0516828	GEAR Z:40
829	PW01M	FLAT WASHER 8MM
830	PB03M	HEX BOLT M8-1.25 X 16
831	P0516831	SLIDING BEARING 16 X 9 X 20
832	P0516832	ADJ SHAFT SPACER
833	P0516833	GEAR REST
834	P0516834	ADJ SHAFT NUT 15 X 8 X 16
835	PS31M	PHLP HD SCR M6-1 X 35
836	PK37M	KEY 4 X 4 X 16
843	P0516843	MACHINE ID LABEL
844	P0516844	GEAR CHANGE LABEL V1.11.02
844A	P0516844A	GEAR CHANGE LABEL V2.03.08
845	P0516845	GEAR Z:75
846	P0516846	GEAR Z:100
847	PLABEL-26	UNPLUG LABEL
848	PLABEL-27	MM CONVERSION CHART
849	PN04M	HEX NUT M4-.7
850	PS63M	PHLP HD SCR M6-1 X 4
851	P0516851	HINGE
852	P0516852	GEAR Z:65

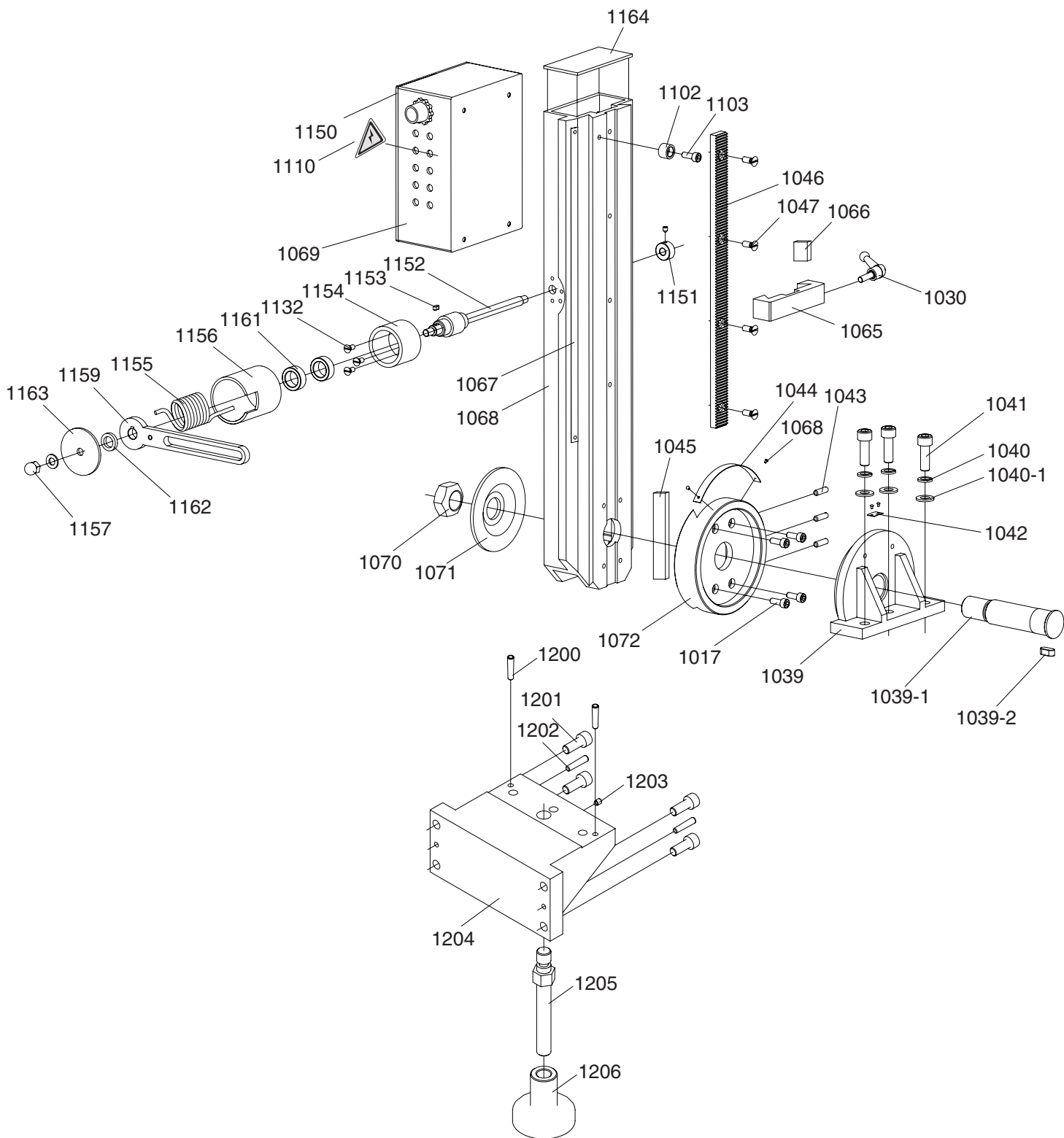


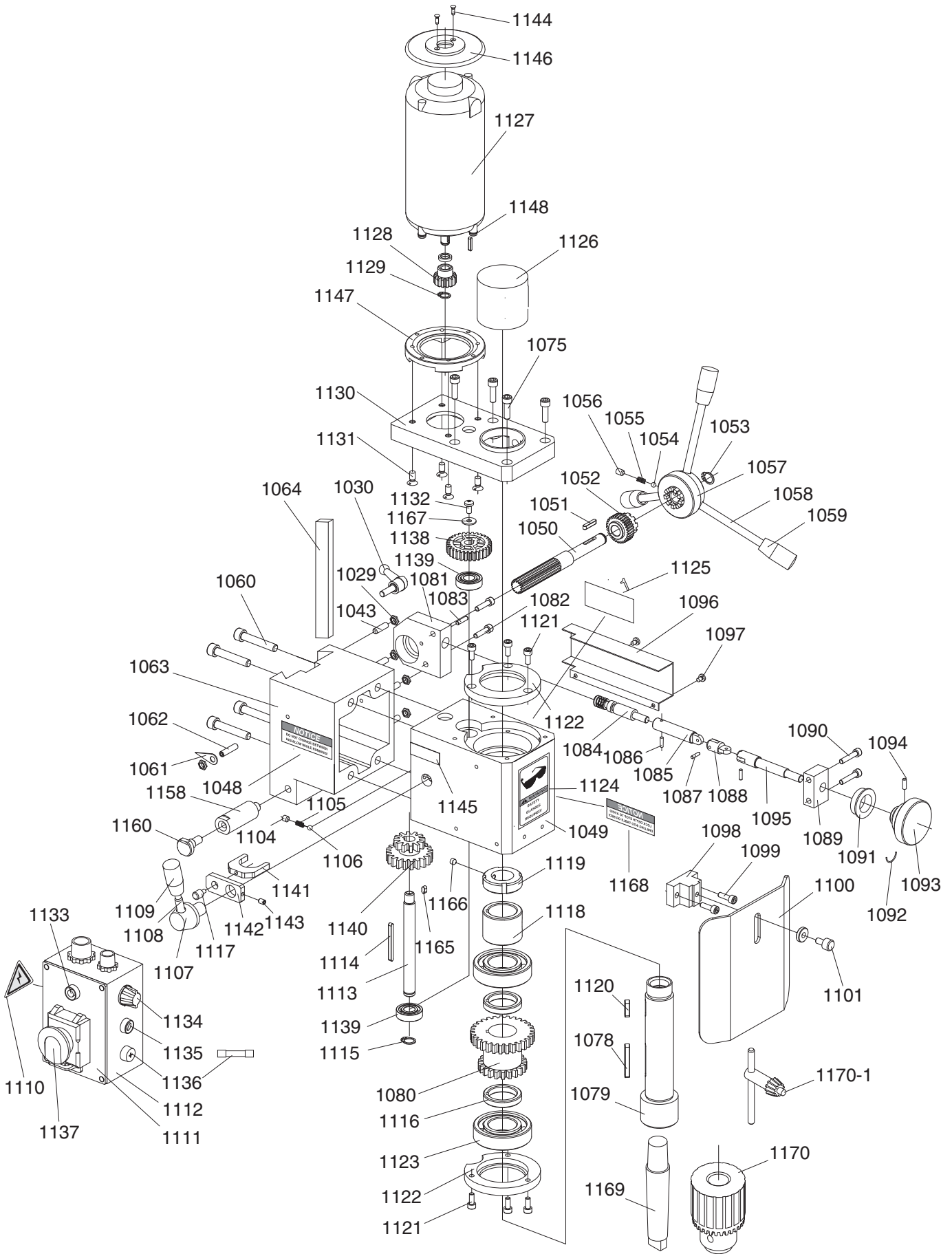


REF	PART #	DESCRIPTION
901	PB26M	HEX BOLT M8-1.25 X 30
902	PW01M	FLAT WASHER 8MM
903V2	P0516903V2	MOTOR 3/4 HP 110V 1-PH V2.11.09
904	PK02M	KEY 5 X 5 X 40
905	P0516905	MOTOR SHAFT SPACER
906	P0516906	DRIVE PULLEY
907	P0516907	KEYWAY SHAFT SPACER 37 X 16 X 2.5
908	P0516908	MOTOR PULLEY
909	P0516909	CHECK RING
910	PS62M	PHLP HD SCR M6-1 X 30
911	P0516114	OIL CUP 6MM
912	P0516912	GREAT WASHER 26 X 12 X 3
913	P0516913	COUNTER PULLEY
914	P0516914	SLIDE BEARING 30.1 X 16 X 62
915	P0516915	ARM SHAFT
916	P0516916	BEARING ARBOR
917	P0516917	TENSION PULLEY
918	P6001	BALL BEARING 6001ZZ
919	P0516919	SPACER
920	PLW03M	LOCK WASHER 6MM
921	PR03M	EXT RETAINING RING 12MM
922	PR19M	EXT RETAINING RING 28MM
923	P0516923	PIVOT
924	P0516924	PIVOT SPACER
925	PW04M	FLAT WASHER 10MM
926	PN02M	HEX NUT M10-1.5

REF	PART #	DESCRIPTION
927	PS59M	PHLP HD SCR M3-.5 X 14
928	PB07M	HEX BOLT M8-1.25 X 25
929	PS05M	PHLP HD SCR M5-.8 X 8
930	P0516930	FAN-SUPPORT
931	P0516931	ADJ SLOT SPACER
932	PS31M	PHLP HD SCR M6-1 X 35
933	PB32M	HEX BOLT M10-1.5 X 25
934	PN06M	HEX NUT M5-.8
935	P0516935	PULLEY SUPPORT
936	P0516936	MOTOR COVER
937	PS14M	PHLP HD SCR M6-1 X 12
938	P0516938	ARM SHAFT NUT M12
939	P0516939	SOCKET OUTLET
940	P0516940	SUPPORT SPACER
941	PS12M	PHLP HD SCR M3-.5 X 6
942	P0516942	ELECTRIC TOP COVER
943	PLW04M	LOCK WASHER 8MM
944	P0516944	TIMING BELT 1.5 X 124 X 15MM
945	PVM30	V-BELT M-30 3L300
946	PN06M	HEX NUT M5-.8
947	P0516947	MAIN POWER SOCKET
948	PLABEL-14	ELECTRICITY LABEL
949	P0516949	QUICK CHANGE COLLET SET
949-1	P0516949-1	COLLET NUT
949-2	P0516949-2	COLLET SHAFT







REF	PART #	DESCRIPTION
1017	PSB01M	CAP SCREW M6-1 X 16
1029	PN01M	HEX NUT M6-1
1030	P05161030	HANDLE
1039	P05161039	FUSELAGE SEAT
1039-1	P05161039-1	SHAFT
1039-2	PK70M	KEY 8 X 8 X 12
1040	PLW06M	LOCK WASHER 10MM
1040-1	PW04M	FLAT WASHER 10MM
1041	PSB72M	CAP SCREW M10-1.5 X 30
1042	P05161042	GUIDE FINGER
1043	PSS46M	SET SCREW M6-1 X 22
1044	P05161044	RULER
1045	P05161045	WEDGE
1046	P05161046	GEAR RACK 8 5/8"
1047	PSB26M	CAP SCREW M6-1 X 12
1048	P05161048	HIGH/LOW NOTICE
1049	P05161049	SPINDLE BOX
1050	P05161050	PINION
1051	PK30M	KEY 4 X 4 X 25
1052	P05161052	BEVEL GEAR
1053	PR03M	EXT RETAINING RING 12MM
1054	P05161054	BALL 5MM
1055	P05161055	SPRING 0.8 X 0.8 X 10MM
1056	PS03M	PHLP HD SCR M6-1 X 8
1057	P05161057	HANDLE STOCK
1058	P05161058	OPERATING LEVER
1059	P05161059	LEVER CAP
1060	PSB31M	CAP SCREW M8-1.25 X 25
1061	P05161061	GUIDE FINGER
1062	PSB06M	CAP SCREW M6-1 X 25
1063	P05161063	SPINDLE BOX SEAT
1064	P05161064	WEDGE

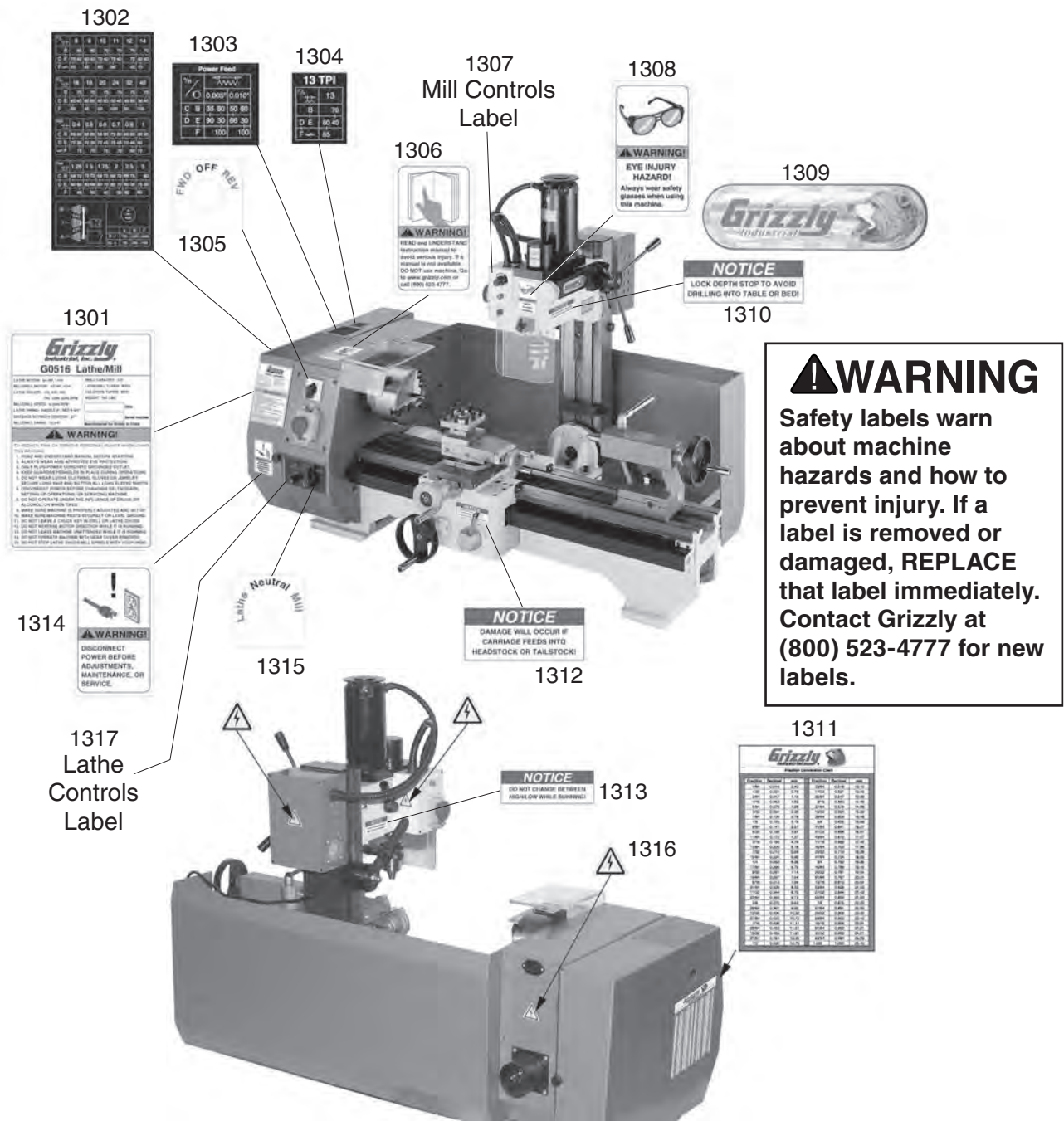
REF	PART #	DESCRIPTION
1065	P05161065	LIMIT BLOCK
1066	P05161066	WEDGE
1067	P05161067	RULER
1068	P05161068	RIVET
1069	P05161069	ELECTRIC BOX
1070	P8689070	LOCK NUT M24-3
1071	P05161071	BIG WASHER 95 X 25 X 12
1072	P05161072	CONNECTING STRUT
1075	PSB02M	CAP SCREW M6-1 X 20
1078	PK02M	KEY 5 X 5 X 40
1079	P05161079	SPINDLE
1080	P8689080	TRANSMISSION GEAR (WIDE)
1081	P05161081	SUPPORT BLOCK
1082	PS06M	PHLP HD SCR M5-.8 X 20
1083	PRP60M	ROLL PIN 4 X 15
1084	P05161084	WORM
1085	P05161085	SLEEVE
1086	PRP61M	ROLL PIN 3 X 12
1087	PRP61M	ROLL PIN 3 X 12
1088	P05161088	ADJUSTABLE UNION
1089	P05161089	BRACKET
1090	PS22M	PHLP HD SCR M5-.8 X 25
1091	P05161091	DIAL
1092	P05161092	SPRING STEEL 1MM
1093	P05161093	SMALL HAND WHEEL
1094	PS40M	PHLP HD SCR M5-.8 X 16
1095	P05161095	SMALL SHAFT
1096	P05161096	COVER
1097	PS17M	PHLP HD SCR M4-.7 X 6
1098	P8689098	DUST COVER SUPPORT
1099	PS40M	PHLP HD SCR M5-.8 X 16



REF	PART #	DESCRIPTION
1100	P8689100	CHIP GUARD
1101	P05161101	CLAMP BOLT M6-1.0 X 12
1102	P05161102	UPPER END WASHER 16 X 7 X 11
1103	P05161103	END SCREW M6-1 X 16MM
1104	PSS02M	SET SCREW M6-1 X 6
1105	P05161105	SPRING .8 X 4.8 X 10MM
1106	P05161106	BALL 5MM
1107	P05161107	HANDLE SEAT
1108	P05161108	DOUBLE HD BOLT M8-1.25 X 70
1109	P05161109	KNOB
1110	PLABEL-14	ELECTRICITY LABEL
1111	P8689111	CONTROLLER
1112	P05161112	LABEL ON CONTROLLER
1113	P05161113	SHAFT I
1114	PK71M	KEY 4 X 4 X 45
1115	PR49M	INT RETAINING RING 12MM
1116	P05161116	SPACING RING
1117	P05161117	SMALL SHAFT
1118	P05161118	SPACING RING
1119	P05161119	SPINDLE NUT 42 X 36 X 6
1120	PK12M	KEY 5 X 5 X 30
1121	PSB03M	CAP SCREW M5-.8 X 8
1122	P05161122	BEARING COVER
1123	P6206	BALL BEARING 6206
1124	PLABEL-11	SAFETY GLASSES LABEL
1125	P05161125	FINE FEEDING LABEL
1126	P05161126	PROTECTING COVER
1127	P05161127	MOTOR 4/5 HP 110V 1-PH
1128	P05161128	MOTOR GEAR
1129	PR16M	EXT RETAINING RING 9MM
1130	P05161130	MOTOR SEAT
1131	PFH02M	FLAT HD SCR M6-1 X 12
1132	PS05M	PHLP HD SCR M5-.8 X 8
1133	P05161133	LAMP
1134	P05161134	SPEED CONTROL KNOB
1135	P05161135	SWITCH
1136	P05161136	MILL FUSE F5A L 250V
1137	P05161137	STOP SWITCH
1138	P05161138	GEAR 30T

REF	PART #	DESCRIPTION
1139	P6001	BALL BEARING 6001
1140	P05161140	GEAR 12T/20T
1141	P05161141	BAR
1142	P05161142	LINKING BOARD
1143	PSS31M	SET SCREW M5-.8 X 8
1144	P05161144	TAPPING SCREW 2.9 X 8MM
1145	P05161145	H/L LABEL
1146	P05161146	MOTOR COVER
1147	P05161147	MOTOR FLANGE
1148	PS68M	PHLP HD SCR M6-1 X 10
1150	P05161150	PC BOARD
1151	P05161151	LOCK SLEEVE
1152	P05161152	ROTOR SHAFT
1153	PK72M	KEY 4 X 4 X 6
1154	P05161154	SPRING SUPPORT
1155	P05161155	TORSION SPRING 100 X 13.7
1156	P05161156	COVER
1157	PN03M	HEX NUT M8-1.25
1158	P05161158	PROP
1159	P05161159	SUPPORTING SHANK
1160	P05161160	SHANK SCREW 20 X 10 X 30
1161	P05161161	ROTOR SHAFT SPACER
1162	P05161162	SHANK COVER SPACER
1163	P05161163	SHANK COVER
1164	P05161164	TOP COVER
1165	PS12M	PHLP HD SCR M3-.5 X 6
1166	PS03M	PHLP HD SCR M6-1 X 8
1167	PW02M	FLAT WASHER 5MM
1168	P05161168	DEPTH STOP NOTICE
1169	P05161169	ARBOR MT#3~B16
1170	P05161170	DRILL CHUCK B16 1-13MM
1170-1	P05161170-1	DRILL CHUCK KEY
1200	PRP08M	ROLL PIN 6 X 30
1201	PS58M	PHLP HD SCR M10-1.5 X 40
1202	PRP08M	ROLL PIN 6 X 30
1203	PS03M	PHLP HD SCR M6-1 X 8
1204	P05161204	SUPPORT
1205	P05161205	SUPPORT BOLT 25.4 X 16 X 140
1206	P05161206	SUPPORT PLATE





REF	PART #	DESCRIPTION
1301	P0516843	G0516 MACHINE ID LABEL
1302	P0516844A	GEAR/SPEED CHANGE LABEL
1303	P05161303	FEED SPEED LABEL
1304	P05161304	13TPI THREADING LABEL
1305	P05161305	FWD/REV LABEL
1306	PLABEL-12A	READ MANUAL LABEL
1307	P05161307	MILL CONTROLS LABEL
1308	PLABEL-11	SAFETY GLASSES LABEL
1309	PLABEL-10	COLOR GRIZZLY LABEL

REF	PART #	DESCRIPTION
1310	P05161168	DEPTH STOP NOTICE
1311	PLABEL-27	INCH/MM CONVERSION CHART
1312	P0516634	CARRIAGE FEED NOTICE
1313	P05161048	HIGH/LOW NOTICE
1314	PLABEL-26	DISCONNECT POWER LABEL
1315	P05161315	LATHE/MILL LABEL
1316	PLABEL-14	ELECTRICITY LABEL
1317	P05161317	LATHE CONTROLS LABEL

