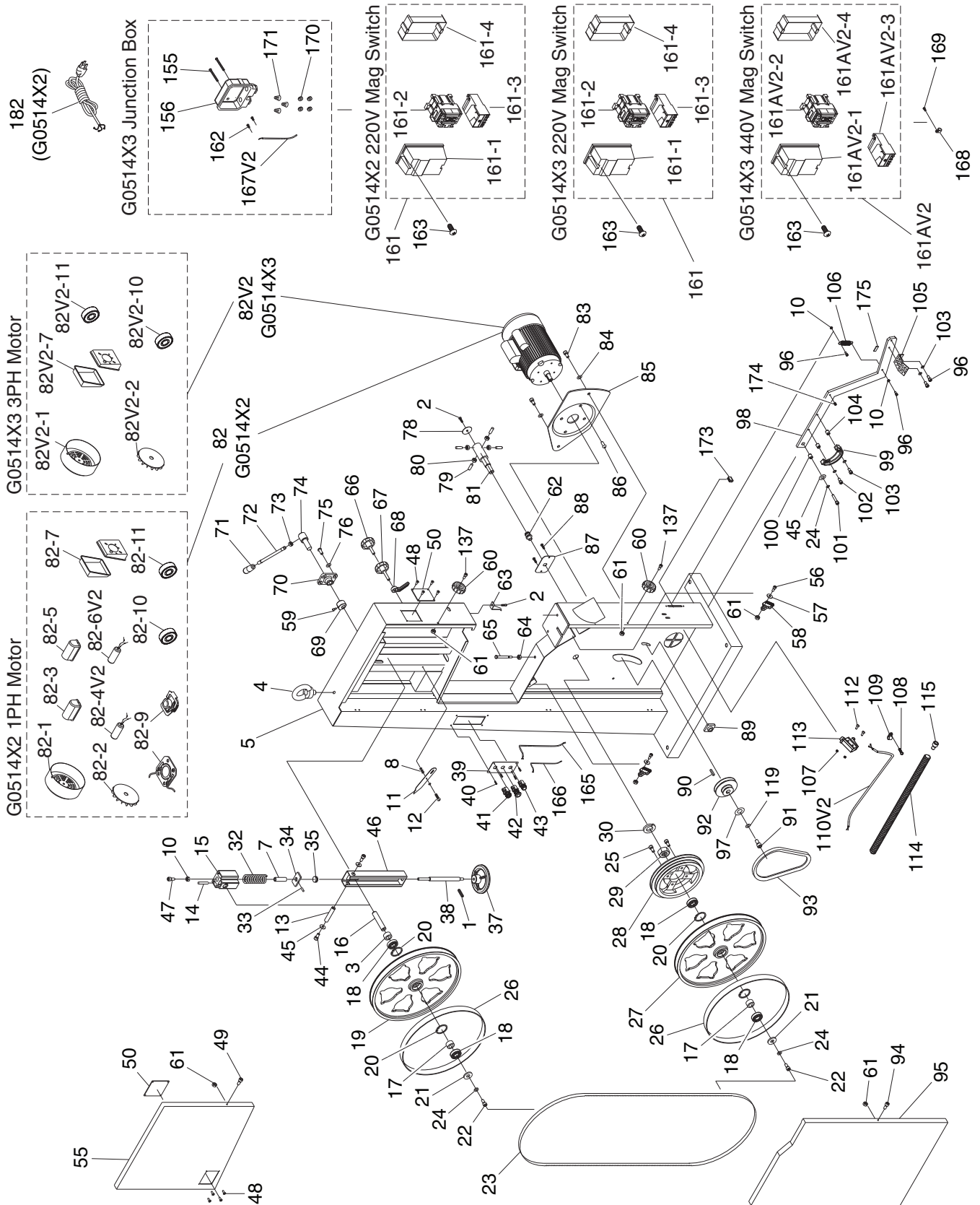


# G0514X2 & G0514X3 Main



# G0514X2 & G0514X3 Main Parts List

REF	PART #	DESCRIPTION
1	P0514X2001	SET SCREW M6-1 X 10
2	P0514X2002	FLANGE SCREW M5-.8 X 10
3	P0514X2003	BUSHING
4	P0514X2004	LIFTING EYE BOLT M10-1.5
5	P0514X2005	MACHINE BODY
7	P0514X2007	BUSHING
8	P0514X2008	FLAT WASHER 6MM
10	P0514X2010	HEX NUT M6-1
11	P0514X2011	TENSION POINTER
12	P0514X2012	STEP SCREW M4-.7 X 5
13	P0514X2013	SLEEVE
14	P0514X2014	ROLL PIN 5 X 35
15	P0514X2015	UPPER WHEEL SHAFT HINGE
16	P0514X2016	UPPER WHEEL SHAFT
17	P0514X2017	BUSHING
18	P0514X2018	BALL BEARING 6204 2RS
19	P0514X2019	UPPER WHEEL 19"
20	P0514X2020	INT RETAINING RING 47MM
21	P0514X2021	WHEEL FLAT WASHER 8MM
22	P0514X2022	CAP SCREW M8-1.25 X 16
23	P0514X2023	BLADE 6TPI HOOK 143"
24	P0514X2024	LOCK WASHER 8MM
25	P0514X2025	CAP SCREW M8-1.25 X 20
26	P0514X2026	URETHANE TIRE (PAIR)
27	P0514X2027	LOWER WHEEL 19"
28	P0514X2028	IDLER PULLEY
29	P0514X2029	HEX NUT 1-14
30	P0514X2030	LOCK WASHER 1"
32	P0514X2032	COMPRESSION SPRING 7 X 8 X 90
33	P0514X2033	ROLL PIN 3 X 16
34	P0514X2034	SPRING BASE PLATE
35	P0514X2035	THRUST BEARING 51201
37	P0514X2037	TENSION HANDWHEEL
38	P0514X2038	ADJUSTMENT SHAFT
39	P0514X2039	CONTROL PANEL
40	P0514X2040	TAP SCREW M4 X 10
41	P0514X2041	KEYED POWER SWITCH
42	P0514X2042	ON BUTTON
43	P0514X2043	OFF BUTTON
44	P0514X2044	CAP SCREW M8-1.25 X 16
45	P0514X2045	FENDER WASHER 8MM
46	P0514X2046	UPPER WHEEL SLIDING BRACKET
47	P0514X2047	CAP SCREW M6-1 X 90
48	P0514X2048	STEEL BLIND RIVET 3 X 10MM
49	P0514X2049	CAP SCREW M6-1 X 12
50	P0514X2050	CLEAR WINDOW
55	P0514X2055	WHEEL COVER UPPER
56	P0514X2056	CAP SCREW M6-1 X 25
57	P0514X2057	FLAT WASHER 6MM
58	P0514X2058	WHEEL BRUSH
59	P0514X2059	CAP SCREW M6-1 X 25
60	P0514X2060	STAR HANDLE

REF	PART #	DESCRIPTION
61	P0514X2061	LOCK NUT M6-1
62	P0514X2062	STRAIN RELIEF 16MM
63	P0514X2063	HEIGHT POINTER
64	P0514X2064	HEX NUT M8-1.25
65	P0514X2065	HEX BOLT M8-1.25 X 90
66	P0514X2066	KNOB BOLT M10-1.5 X 20
67	P0514X2067	KNOB BOLT M10-1.5 X 53
68	P0514X2068	THREADED HANDLE 10MM
69	P0514X2069	CAM
70	P0514X2070	HUB BRACKET
71	P0514X2071	KNOB
72	P0514X2072	LEVER
73	P0514X2073	HEX NUT M12-1.75
74	P0514X2074	LEVER HUB
75	P0514X2075	BUTTON HD CAP SCR M8-1.25 X 20
76	P0514X2076	LOCK WASHER 8MM
78	P0514X2078	SHAFT END CAP
79	P0514X2079	SET SCREW M8-1.25 X 20
80	P0514X2080	HEX NUT M8-1.25
81	P0514X2081	LOWER WHEEL SHAFT
83	P0514X2083	HEX BOLT M10-1.5 X 25
84	P0514X2084	LOCK WASHER 10MM
85	P0514X2085	MOTOR MOUNT PLATE
86	P0514X2086	BUTTON HD CAP SCR M8-1.25 X 20
87	P0514X2087	PLATE
88	P0514X2088	FLANGE SCREW M5-.8 X 10
89	P0514X2089	GUIDE KEY
90	P0514X2090	KEY 5 X 5 X 35
91	P0514X2091	HEX BOLT M8-1.25 X 20 LH
92	P0514X2092	MOTOR PULLEY
93	P0514X2093	V-BELT A42
94	P0514X2094	CAP SCREW M6-1 X 10
95	P0514X2095	LOWER WHEEL COVER
96	P0514X2096	CAP SCREW M6-1 X 16
97	P0514X2097	FENDER WASHER 8MM
98	P0514X2098	BRAKE LEVER
99	P0514X2099	BRAKE PAD
100	P0514X2100	BUSHING
101	P0514X2101	CAP SCREW M8-1.25 X 25
102	P0514X2102	CAP SCREW M6-1 X 25
103	P0514X2103	LOCK WASHER 6MM
104	P0514X2104	BUSHING
105	P0514X2105	BRAKE PEDAL PAD
106	P0514X2106	EXTENSION SPRING
107	P0514X2107	HEX NUT M4-.7
108	P0514X2108	TAP SCREW M4 X 8
109	P0514X2109	CORD CLAMP 5/8"
110V2	P0514X2110V2	BRAKE SWITCH CORD V2.05.11
112	P0514X2112	PHLP HD SCR M4-.7 X 30
113	P0514X2113	BRAKE SWITCH KL7141
114	P0514X2114	CORD CONDUIT 1/2" X 43-5/16"
115	P0514X2115	STRAIN RELIEF



# G0514X2 & G0514X3 Main Parts List

REF	PART #	DESCRIPTION
119	P0514X2119	LOCK WASHER 8MM
137	P0514X2137	CAP SCREW M6-1 X 20
163	P0514X2163	FLANGE SCREW M5-.8 X 10
165	P0514X2165	CONTROL CORD 16G 3W
166	P0514X2166	MOTOR CORD 14G 3W
166	P0514X2166	MOTOR CORD 14G 4W

REF	PART #	DESCRIPTION
168	P0514X2168	CORD CLAMP
169	P0514X2169	FLANGE SCREW M5-.8 X 12
173	P0514X2173	STRAIN RELIEF 9 X 10MM
174	P0514X2174	SET BOLT M7-1 X 10 NYLON
175	P0514X2175	SPACER NYLON
182	P0514X2182	POWER CORD 14AWG 3C 6-15 (G0514X2)

## G0514X3 Power Connection Junction Box

REF	PART #	DESCRIPTION
155	P0514X2155	FLANGE SCREW M5-.8 X 50
156	P0514X2156	TERMINAL BOX
162	P0514X2162	PHLP HD SCR M4-.7 X 10

REF	PART #	DESCRIPTION
167V2	P0514X2167V2	GROUNDING WIRE 90MM V2.05.11
170	P0514X2170	EXT TOOTH WASHER 5MM
171	P0514X2171	WIRE NUT P3

## G0514X2 220V Motor

REF	PART #	DESCRIPTION
82	P0514X2082	MOTOR 3HP 220V 1PH 60HZ
82-1	P0514X2082-1	MOTOR FAN COVER
82-2	P0514X2082-2	MOTOR FAN
82-3	P0514X2082-3	START CAPACITOR COVER
82-4V2	P0514X2082-4V2	S CAPACITOR 300M 250V V2.05.11
82-5	P0514X2082-5	R CAPACITOR COVER

REF	PART #	DESCRIPTION
82-6V2	P0514X2082-6V2	R CAPACITOR 60M 300V V2.05.11
82-7	P0514X2082-7	MOTOR JUNCTION BOX
82-9	P0514X2082-9	CENTRIFUGAL SWITCH W/ CONTACT PLATE
82-10	P0514X2082-10	FRONT MOTOR BEARING
82-11	P0514X2082-11	REAR MOTOR BEARING

## G0514X3 220V Motor

REF	PART #	DESCRIPTION
82V2	P0514X3082V2	MOTOR 3HP 220/440V 3PH V2.05.11
82V2-1	P0514X3082V2-1	MOTOR FAN COVER
82V2-2	P0514X3082V2-2	MOTOR FAN

REF	PART #	DESCRIPTION
82V2-7	P0514X3082V2-7	MOTOR JUNCTION BOX
82V2-10	P0514X3082V2-10	FRONT MOTOR BEARING
82V2-11	P0514X3082V2-11	REAR MOTOR BEARING

## G0514X2 220V Magnetic Switch

REF	PART #	DESCRIPTION
161	P0514X161	MAG SWITCH ASSY 3HP 1PH 220V
161-1	P0514X2161-1	MAG SWITCH BACK COVER
161-2	P0514X2161-2	CONTACTOR SDE MA-18

REF	PART #	DESCRIPTION
161-3	P0514X2161-3	OL RELAY SDE RA-20 12-18A
161-4	P0514X2161-4	MAG SWITCH FRONT COVER

## G0514X3 220V Magnetic Switch

REF	PART #	DESCRIPTION
161	P0514X3161	MAG SWITCH ASSY 220V
161-1	P0514X3161-1	SWITCH BACK COVER 220V
161-2	P0514X3161-2	CONTACTOR SDE MA-09 220V

REF	PART #	DESCRIPTION
161-3	P0514X3161-3	OL RELAY SDE RA-20 8-12A
161-4	P0514X3161-4	SWITCH FRONT COVER 220V

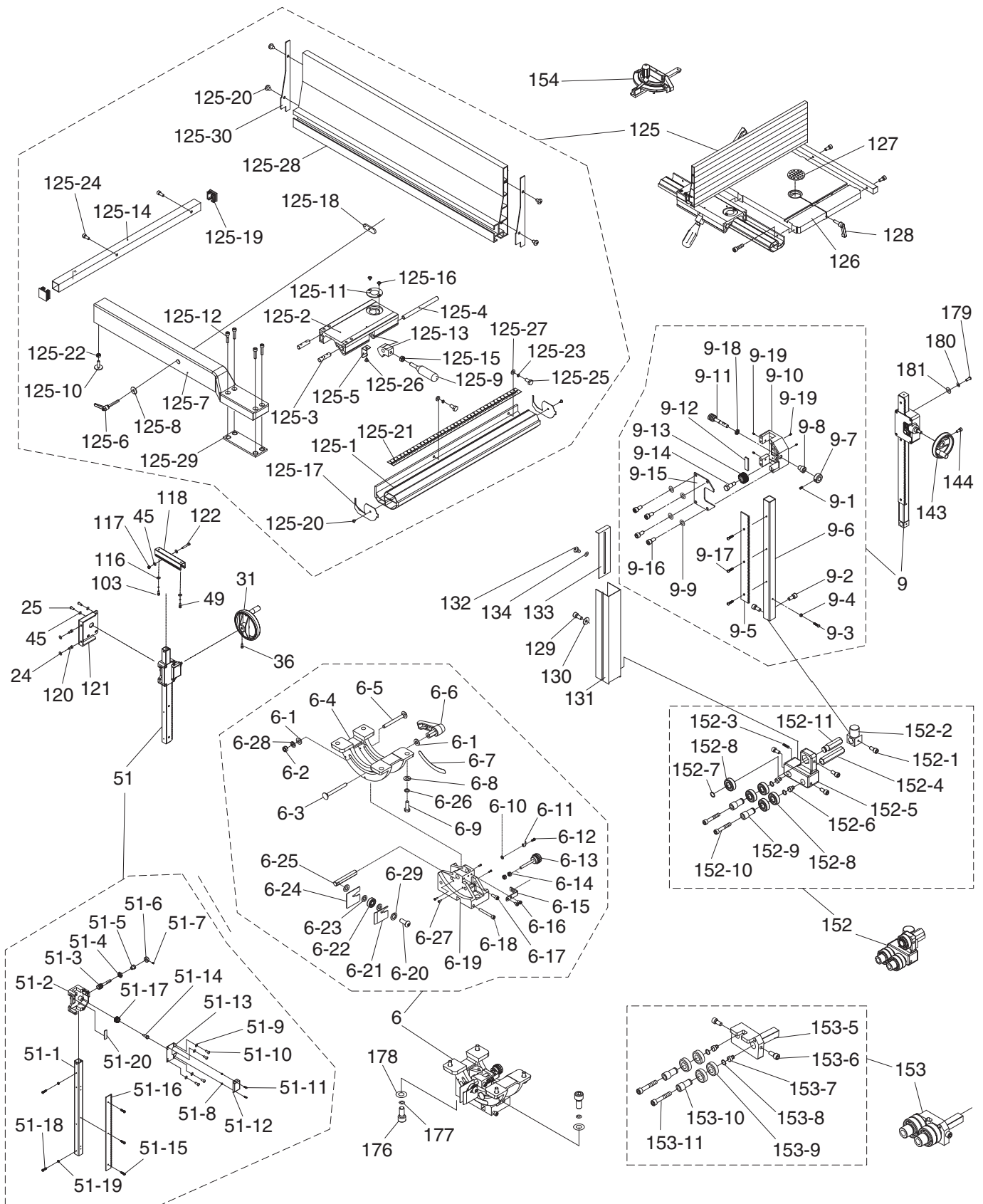
## G0514X3 440V Magnetic Switch

REF	PART #	DESCRIPTION
161AV2	P0514X3161AV2	MAG SWITCH ASSY 440V V2.05.11
161AV2-1	P0514X3161AV2-1	MAG SWITCH BACK COVER
161AV2-2	P0514X3161AV2-2	CONTACTOR SDE MA-09 440V

REF	PART #	DESCRIPTION
161AV2-3	P0514X3161AV2-3	OL RELAY SDE RA-20 5-8A
161AV2-4	P0514X3161AV2-4	MAG SWITCH FRONT COVER



# G0514X2 & G0514X3 Fence & Guides



# G0514X2 & G0514X3 Fence & Guides Parts List

REF	PART #	DESCRIPTION
6	P0514X2006	TRUNNION ASSEMBLY
6-1	P0514X2006-1	FENDER WASHER 8MM
6-2	P0514X2006-2	LOCK NUT M8-1.25
6-3	P0514X2006-3	CARRIAGE BOLT M8-1.25 X 85
6-4	P0514X2006-4	TRUNNION
6-5	P0514X2006-5	CARRIAGE BOLT M8-1.25 X 80
6-6	P0514X2006-6	LOCK HANDLE
6-7	P0514X2006-7	ANGLE SCALE
6-8	P0514X2006-8	FLAT WASHER 8MM
6-9	P0514X2006-9	HEX BOLT M8-1.25 X 25
6-10	P0514X2006-10	FLAT WASHER 4MM
6-11	P0514X2006-11	TILT POINTER
6-12	P0514X2006-12	PHLP HD SCR M4-.7 X 6
6-13	P0514X2006-13	ADJUSTMENT KNOB BOLT M6-1
6-14	P0514X2006-14	HEX NUT M6-1
6-15	P0514X2006-15	L-BRACKET
6-16	P0514X2006-16	FLAT HD SCR M5-.8 X 16
6-17	P0514X2006-17	CAP SCREW M6-1 X 16
6-18	P0514X2006-18	CAP SCREW M6-1 X 50
6-19	P0514X2006-19	TRUNNION SUPPORT BRACKET
6-20	P0514X2006-20	BUTTON HD CAP SCR M10-1.5 X 30
6-21	P0514X2006-21	RIGHT CLAMP PLATE
6-22	P0514X2006-22	BALL BEARING 6000ZZ
6-23	P0514X2006-23	FLAT WASHER 10MM
6-24	P0514X2006-24	LEFT CLAMP PLATE
6-25	P0514X2006-25	ADJUSTMENT BLOCK
6-26	P0514X2006-26	LOCK WASHER 8MM
6-27	P0514X2006-27	CAP SCREW M5-.8 X 6
6-28	P0514X2006-28	LOCK WASHER 8MM
6-29	P0514X2006-29	LOCK WASHER 10MM
9	P0514X2009	UPPER GUIDE POST ASSEMBLY
9-1	P0514X2009-1	SET SCREW M5-.8 X 5
9-2	P0514X2009-2	CAP SCREW M6-1 X 16
9-3	P0514X2009-3	PHLP HD SCR M4-.7 X 10
9-4	P0514X2009-4	HEX NUT M4-.7
9-5	P0514X2009-5	RACK
9-6	P0514X2009-6	GUIDE POST
9-7	P0514X2009-7	LOCK COLLAR
9-8	P0514X2009-8	BUSHING
9-9	P0514X2009-9	LOCK WASHER 8MM
9-10	P0514X2009-10	GUIDE POST BRACKET
9-11	P0514X2009-11	WORM SHAFT
9-12	P0514X2009-12	FIXED PLATE
9-13	P0514X2009-13	GEAR 15T
9-14	P0514X2009-14	GEAR STEP BOLT
9-15	P0514X2009-15	COVER PLATE
9-16	P0514X2009-16	CAP SCREW M8-1.25 X 16
9-17	P0514X2009-17	FLAT HD SCR M4-.7 X 8

REF	PART #	DESCRIPTION
9-18	P0514X2009-18	HEX NUT M16-1.5
9-19	P0514X2009-19	GUIDE BRACKET PLASTIC SET SCREW
24	P0514X2024	LOCK WASHER 8MM
25	P0514X2025	CAP SCREW M8-1.25 X 20
31	P0514X2031	TABLE TILT HANDWHEEL
36	P0514X2036	CAP SCREW M6-1 X 25
45	P0514X2045	FENDER WASHER 8MM
49	P0514X2049	CAP SCREW M6-1 X 12
51	P0514X2051	TABLE TILT BRACKET ASSEMBLY
51-1	P0514X2051-1	SQUARE TUBE
51-2	P0514X2051-2	GUIDE BRACKET
51-3	P0514X2051-3	WORM SHAFT
51-4	P0514X2051-4	HEX NUT M16-1.5
51-5	P0514X2051-5	BUSHING
51-6	P0514X2051-6	LOCK COLLAR 22 X 10 X 10MM
51-7	P0514X2051-7	SET SCREW M5-.8 X 5
51-8	P0514X2051-8	HEX NUT M5-.8
51-9	P0514X2051-9	LOCK WASHER 8MM
51-10	P0514X2051-10	CAP SCREW M8-1.25 X 16
51-11	P0514X2051-11	FLANGE SCREW M5-.8 X 10
51-12	P0514X2051-12	PINION GEAR COVER
51-13	P0514X2051-13	BRACKET COVER
51-14	P0514X2051-14	PINION GEAR STEP BOLT
51-15	P0514X2051-15	FLAT HD SCR M4-.7 X 8
51-16	P0514X2051-16	RACK
51-17	P0514X2051-17	PINION GEAR 15T
51-18	P0514X2051-18	PHLP HD SCR M4-.7 X 10
51-19	P0514X2051-19	HEX NUT M4-.7
51-20	P0514X2051-20	FIXED PLATE
103	P0514X2103	LOCK WASHER 6MM
116	P0514X2116	FLAT WASHER 6MM
117	P0514X2117	LOCK NUT M8-1.25
118	P0514X2118	SLIDING PLATE
120	P0514X2120	HEX BOLT M8-1.25 X 20
121	P0514X2121	TRUNNION PLATE
122	P0514X2122	CAP SCREW M8-1.25 X 55
125	P0514X2125	FENCE SET ASSEMBLY
125-1	P0514X2125-1	FRONT RAIL 720MM
125-2	P0514X2125-2	FENCE BASE
125-3	P0514X2125-3	ALIGNMENT ROD
125-4	P0514X2125-4	LOCK ROD
125-5	P0514X2125-5	LOCK PLATE
125-6	P0514X2125-6	LOCK HANDLE M8-1.25 X 44
125-7	P0514X2125-7	FENCE 640MM
125-8	P0514X2125-8	FLAT WASHER 8MM
125-9	P0514X2125-9	LOCK LEVER
125-10	P0514X2125-10	REAR FENCE STANDOFF
125-11	P0514X2125-11	SCALE WINDOW



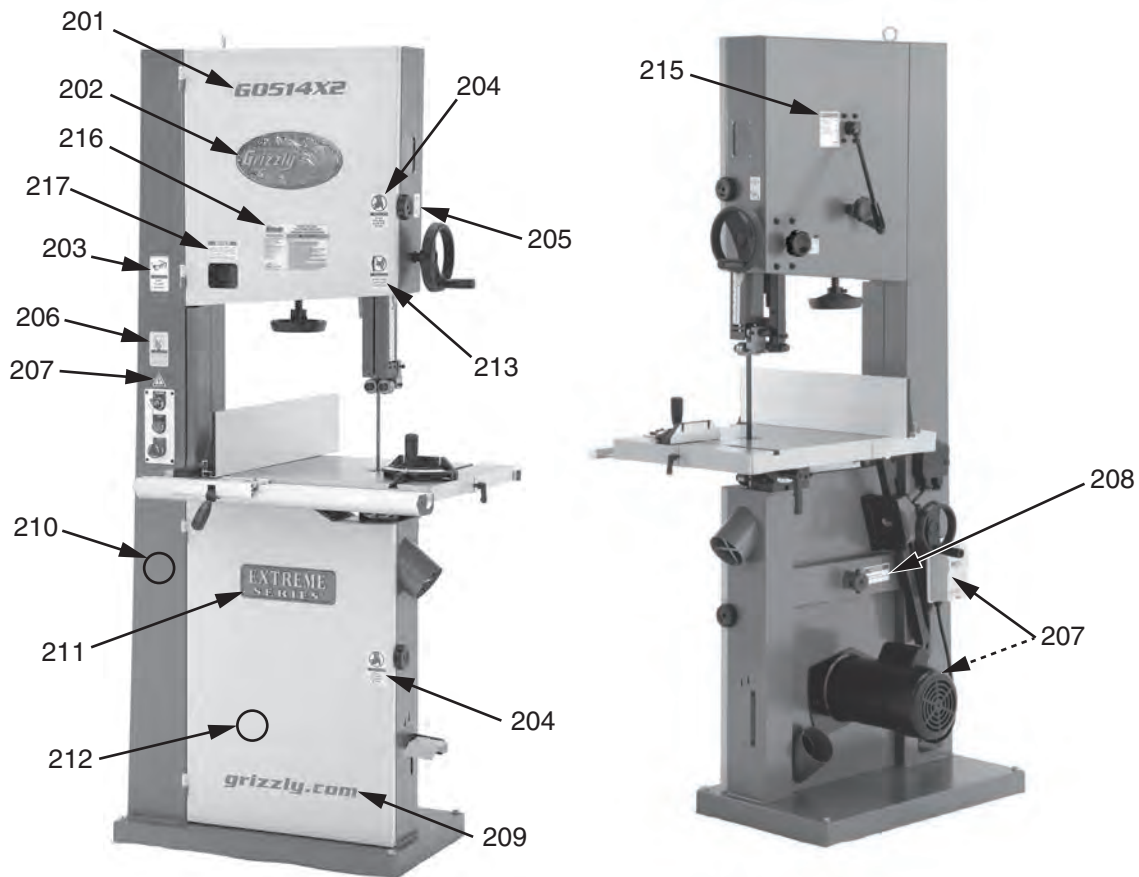
# G0514X2 & G0514X3 Fence & Guides Parts List

REF	PART #	DESCRIPTION
125-12	P0514X2125-12	CAP SCREW M6-1 X 25
125-13	P0514X2125-13	LOCK WEDGE
125-14	P0514X2125-14	REAR RAIL 710MM
125-15	P0514X2125-15	HEX NUT M8-1.25
125-16	P0514X2125-16	FLANGE SCREW M4-.7 X 6
125-17	P0514X2125-17	FRONT RAIL END PLATE
125-18	P0514X2125-18	GUIDE PLATE
125-19	P0514X2125-19	REAR RAIL END PLUG
125-20	P0514X2125-20	TAP SCREW M3.5 X 8
125-21	P0514X2125-21	SCALE 21-1/2"
125-22	P0514X2125-22	HEX NUT M6-1
125-23	P0514X2125-23	LOCK WASHER 6MM
125-24	P0514X2125-24	CAP SCREW M6-1 X 16
125-25	P0514X2125-25	HEX BOLT M6-1 X 20
125-26	P0514X2125-26	FLANGE BOLT M4-.7 X 8
125-27	P0514X2125-27	FLAT WASHER 6MM
125-28	P0514X2125-28	RESAW FENCE 640MM ALUMINUM
125-29	P0514X2125-29	FENCE BASE PLATE
125-30	P0514X2125-30	RESAW FENCE END PLATE
126	P0514X2126	TABLE 27 X 19"
127	P0514X2127	TABLE INSERT
128	P0514X2128	TABLE PIN
129	P0514X2129	CAP SCREW M5-.8 X 10
130	P0514X2130	FLAT WASHER 5MM
131	P0514X2131	GUIDE POST COVER
132	P0514X2132	STEP SCREW
133	P0514X2133	SLIDING COVER
134	P0514X2134	FIBER FLAT WASHER
143	P0514X2143	GUIDE POST HANDWHEEL

REF	PART #	DESCRIPTION
144	P0514X2144	CAP SCREW M6-1 X 20
152	P0514X2152	UPPER BLADE GUIDE ASSEMBLY
152-1	P0514X2152-1	CAP SCREW M6-1 X 16
152-2	P0514X2152-2	GUIDE POST CONNECTOR
152-3	P0514X2152-3	SET SCREW M6-1 X 10
152-4	P0514X2152-4	BRACKET ROD
152-5	P0514X2152-5	UPPER BLADE GUIDE BRACKET
152-6	P0514X2152-6	BIAS SHAFT
152-7	P0514X2152-7	EXT RETAINING RING 15MM
152-8	P0514X2152-8	BALL BEARING 6202ZZ
152-9	P0514X2152-9	BEARING BUSHING
152-10	P0514X2152-10	CAP SCREW M6-1 X 35
152-11	P0514X2152-11	ADJUSTMENT ROD
153	P0514X2153	LOWER BLADE GUIDE ASSEMBLY
153-5	P0514X2153-5	GUIDE BRACKET CONNECTOR
153-6	P0514X2153-6	CAP SCREW M6-1 X 16
153-7	P0514X2153-7	BIAS SHAFT
153-8	P0514X2153-8	EXT RETAINING RING 15MM
153-9	P0514X2153-9	BALL BEARING 6202ZZ
153-10	P0514X2153-10	BEARING BUSHING
153-11	P0514X2153-11	CAP SCREW M6-1 X 35
154	P0514X2154	MITER GAUGE ASSEMBLY
176	P0514X2176	CAP SCREW M10-1.5 X 35
177	P0514X2177	LOCK WASHER 10MM
178	P0514X2178	FLAT WASHER 10MM
179	P0514X2179	BUTTON HD CAP SCR M8-1.25 X 30
180	P0514X2180	LOCK WASHER 8MM
181	P0514X2181	FLAT WASHER 8MM



# G0514X2 & G0514X3 Labels



REF	PART #	DESCRIPTION
201	P0514X2201	MODEL NUMBER LABEL
202	P0514X2202	GRIZZLY LOGO PLATE
203	P0514X2203	GLASSES/RESPIRATOR LABEL
204	P0514X2204	OPEN DOOR LABEL
205	P0514X2205	GUARD ADJ LABEL
206	P0514X2206	READ MANUAL LABEL
207	P0514X2207	ELECTRICITY LABEL
208	P0514X2208	TABLE LOCK LEVER LABEL

REF	PART #	DESCRIPTION
209	P0514X2209	GRIZZLY.COM LABEL
210	P0514X2210	TOUCH-UP PAINT, GRIZZLY GREEN
211	P0514X2211	EXTREME SERIES NAMEPLATE
212	P0514X2212	TOUCH-UP PAINT, PUTTY
213	P0514X2213	DISCONNECT POWER LABEL
215	P0514X2215	TENSION ADJ LABEL
216	P0514X2216	MACHINE ID LABEL
217	P0514X2217	GUIDE POST LOCK KNOB LABEL

## WARNING

Safety labels warn about machine hazards and ways to prevent injury. The owner of this machine **MUST** maintain the original location and readability of the labels on the machine. If any label is removed or becomes unreadable, **REPLACE** that label before using the machine again. Contact Grizzly at (800) 523-4777 or [www.grizzly.com](http://www.grizzly.com) to order new labels.

