



# MODEL H8363 DELUXE SHOP STOOL INSTRUCTION SHEET

## ⚠️ WARNING

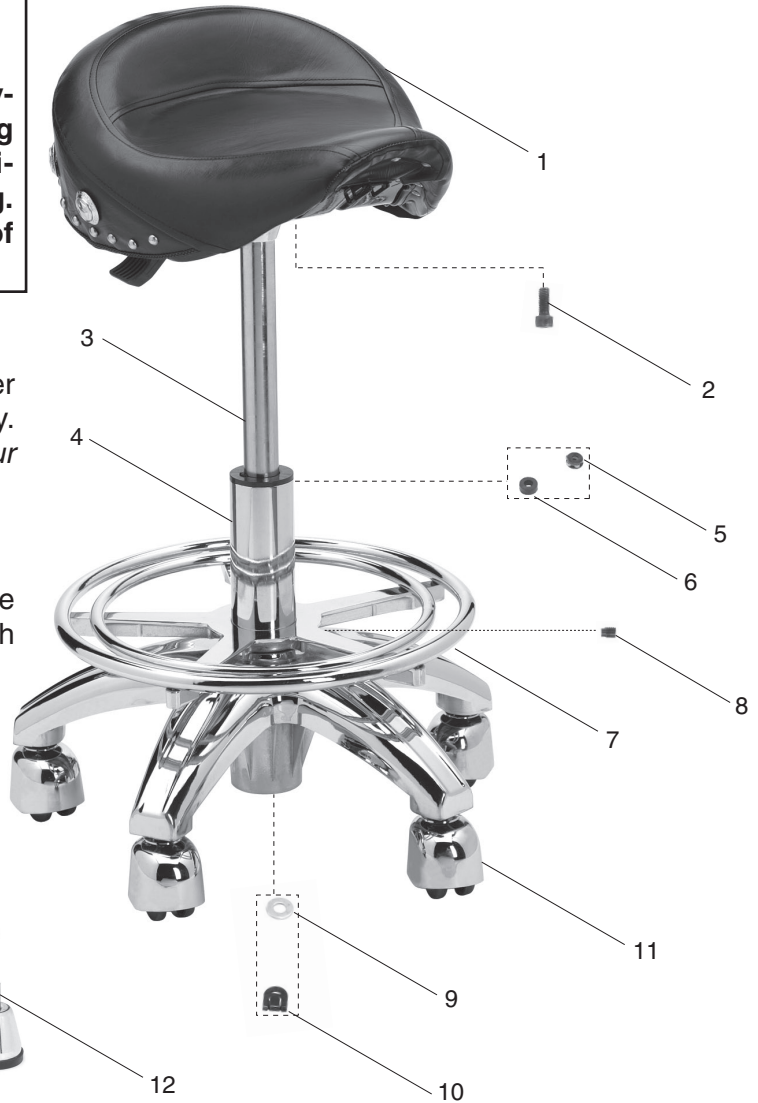
This stool is for sitting only. Due to the swiveling seat and wheels, standing on or using this stool as a step stool can result in serious personal injury from accidental falling. Do not exceed the maximum weight limit of 250 lbs.

## Assembly

Install either the foot assembly or the caster assembly to the bottom of the base assembly. If you need help with the Model H8363, call our Technical Support line at: (570) 546-9663.

## Maintenance

Use a damp cloth or vinyl treatment to clean the seat. Do not use abrasive materials or harsh cleaning products.



REF	PART #	DESCRIPTION
1	PH8363001	SEAT ASSEMBLY
2	PSB14M	CAP SCREW M8-1.25 X 20
3	PH8363003	UPPER SHAFT ASSEMBLY
4	PH8363004	LOWER SHAFT AND BASE ASSEMBLY
5	PH8363005	THRUST BEARING
6	PH8363006	SPACER
7	PH8363007	FOOT REST ASSEMBLY

REF	PART #	DESCRIPTION
8	PH8363008	PILOT SET SCREW M8-1.25 X 10
9	PW01M	FLAT WASHER 8MM
10	PH8363010	CLIP
11	PH8363011	CASTER ASSEMBLY
12	PH8363012	FOOT ASSEMBLY
13	PH8363013	SPECIAL WRENCH

COPYRIGHT © DECEMBER, 2007 BY GRIZZLY INDUSTRIAL, INC.  
**WARNING: NO PORTION OF THIS MANUAL MAY BE REPRODUCED IN ANY SHAPE OR FORM WITHOUT THE WRITTEN APPROVAL OF GRIZZLY INDUSTRIAL, INC.**  
 #JM10217 PRINTED IN CHINA