



# MODEL H8140 COOLANT TANK INSTRUCTION SHEET

## Introduction

This 7 gallon tank system can be added to any metal cutting machine for efficient cutting, reduced tool wear and better finishes. Includes pump, switch, enclosed tank, coolant return hose and flexible nozzle with magnetic base.

## Specifications

Maximum Capacity ..... 7 gal.  
Maximum Flow ..... 3 gal./min.  
Max Height of Nozzle Above Tank ..... 9 ft.  
Horsepower ..... 1/16 HP  
Voltage ..... 110V

## Operation

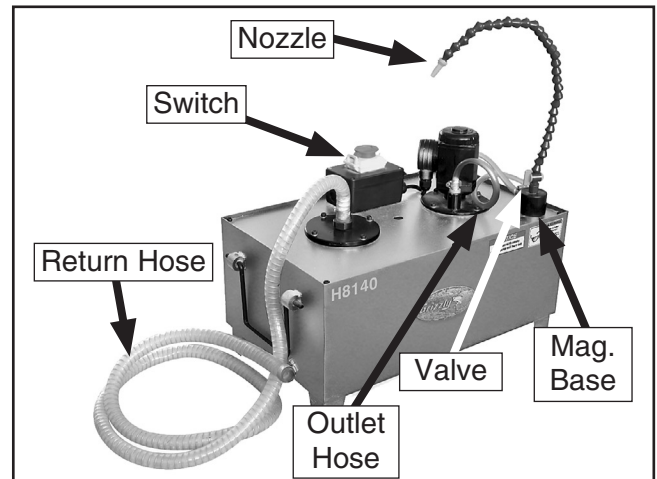
1. Connect the return hose (**Figure 1**) to the coolant return on the machine performing the cutting task.
2. Fill the coolant tank with water-based cutting fluid according to the fluid manufacturer's instructions.

### **! WARNING**

**Do not use flammable liquids. Serious personal injury or death could occur if this warning is not heeded.**

3. Move the magnetic base to a suitable location on the machine, and adjust the nozzle.
4. Plug the coolant tank into power and turn it **ON**.
5. Adjust the coolant hose valve to control the flow of coolant.

*If you need help with your new coolant tank, call our Tech Support at: (570) 546-9663.*



**Figure 1.** H8140 features.

### **! WARNING**

**BIOLOGICAL and POISON HAZARD!**



The reservoir on this machine is designed to store cutting fluid. During storage some fluids grow dangerous microbes, or, due to the collection of toxic metal chips in the fluid, the fluid can become a potent and extremely poisonous solution to humans and animals.

**USE** correct personal protection equipment when handling cutting fluids to prevent infections and poisoning.

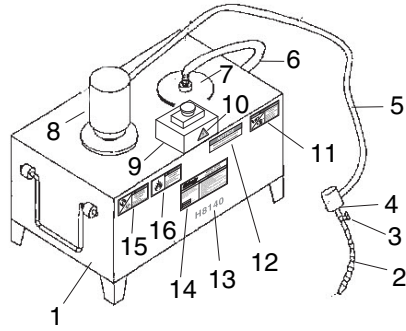
**FOLLOW** federal, state, and the fluid manufacturer requirements to properly dispose of cutting fluid when it becomes unsafe.

COPYRIGHT © FEBRUARY, 2007 BY GRIZZLY INDUSTRIAL, INC.

**WARNING: NO PORTION OF THIS MANUAL MAY BE REPRODUCED IN ANY SHAPE OR FORM WITHOUT THE WRITTEN APPROVAL OF GRIZZLY INDUSTRIAL, INC.**

#BL9008 PRINTED IN CHINA

# Parts List and Breakdown



REF	PART #	DESCRIPTION
1	PH8140001	COOLANT TANK
2	PH8140002	NOZZLE WITH UNIVERSAL TUBE
3	PH8140003	VALVE
4	PH8140004	MAGNETIC BASE
5	PH8140005	OUTLET HOSE
6	PH8140006	RETURN HOSE
7	PH8140007	FILTER
8	PH8140008	MOTOR
9	PH8140009	SWITCH
10	PLABEL-14	ELECTRICITY LABEL
11	PH8140011	RESPIRATOR/GLASSES LABEL-HORIZ.
12	PH8140012	NOTICE-MOTOR BURN OUT
13	PH8140013	MODEL NUMBER LABEL
14	PH8140014	MACHINE ID LABEL
15	PH8140015	BIOLOGICAL & POISON HAZARD LABEL
16	PH8140016	EXPLOSION HAZARD LABEL



# Wiring Diagram

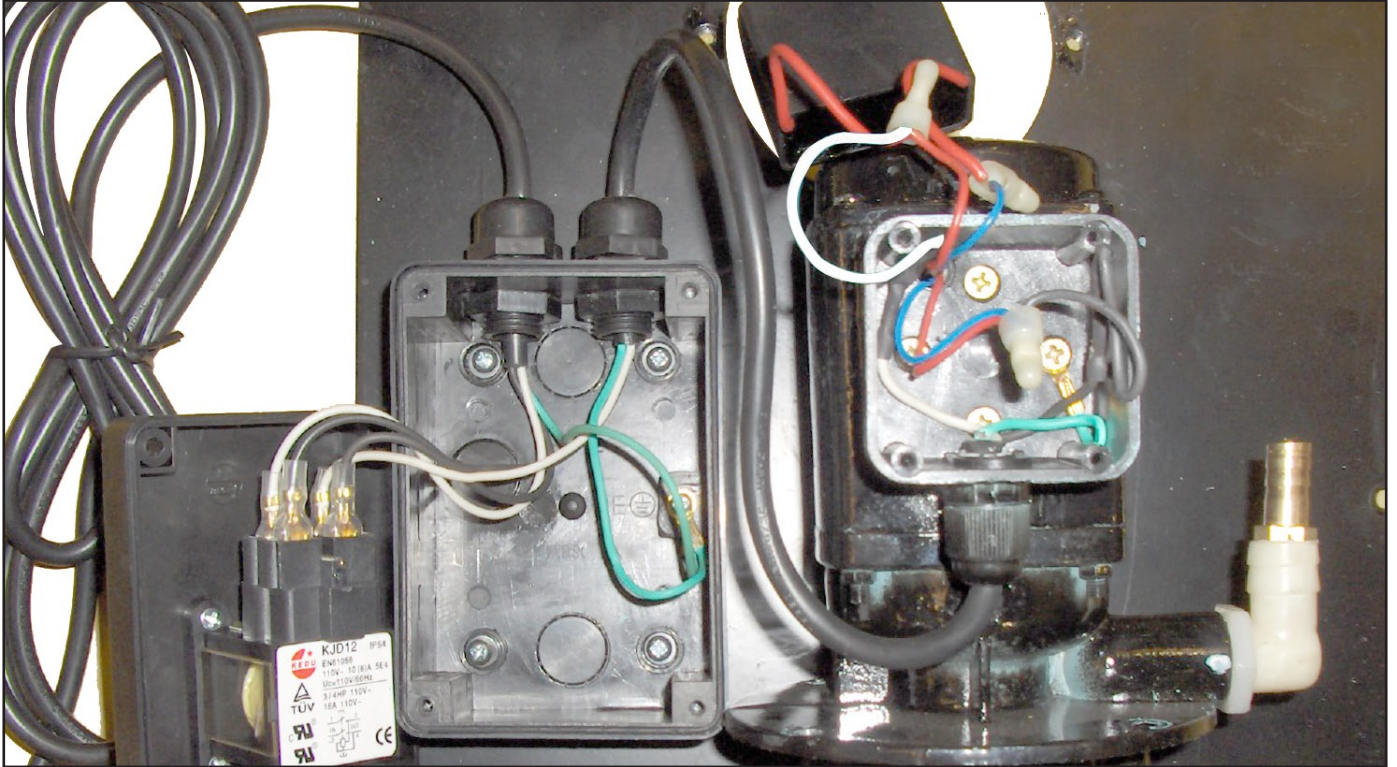
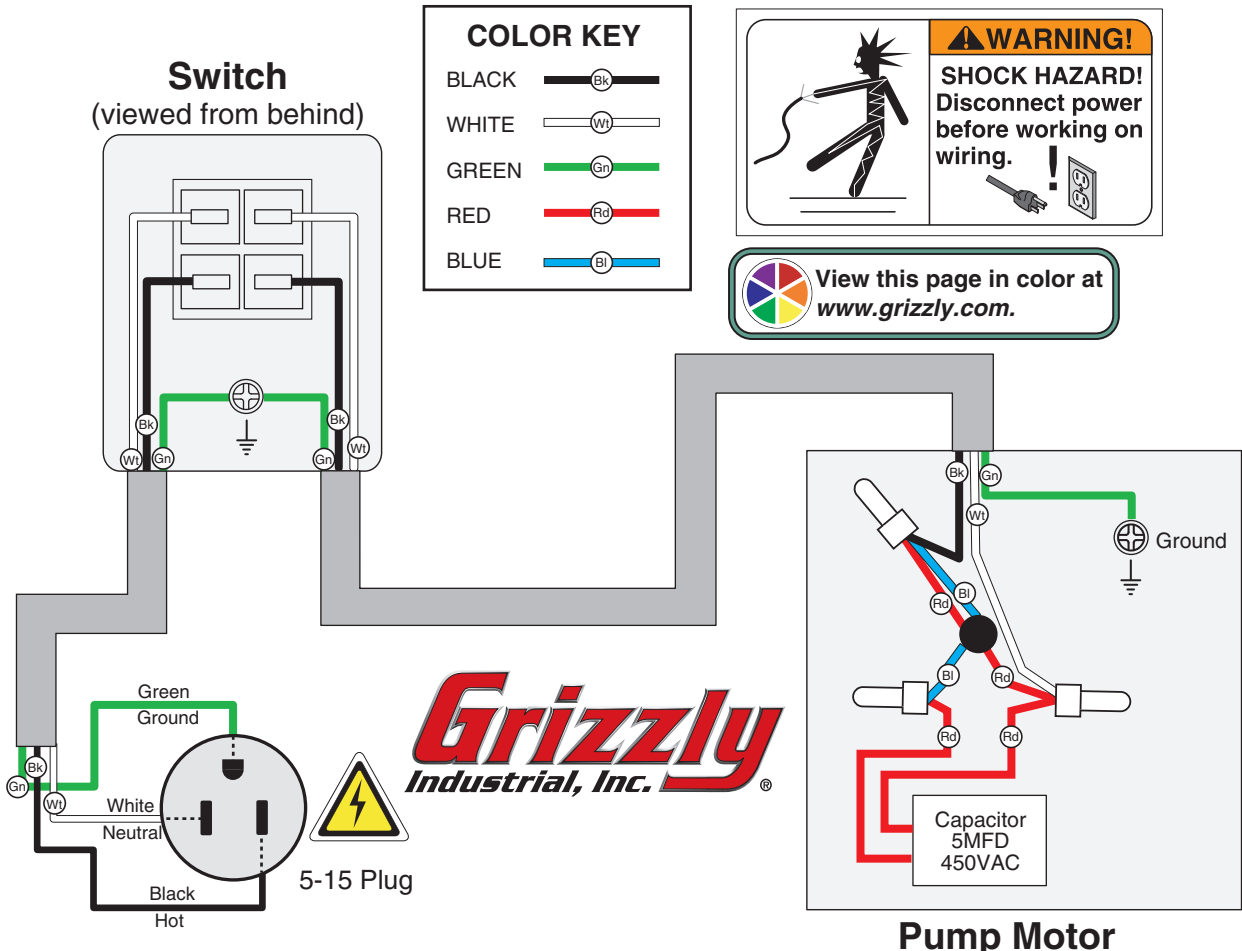


Figure 2. Model H8140 wiring components.



H8140 Coolant Tank



