



# MODEL H8096 1½ Ton Aluminum Jack

## Specifications

Maximum Lifting Capacity .....3000 lbs.  
Lifting Range .....3¼"–15"  
Weight .....27 lbs.

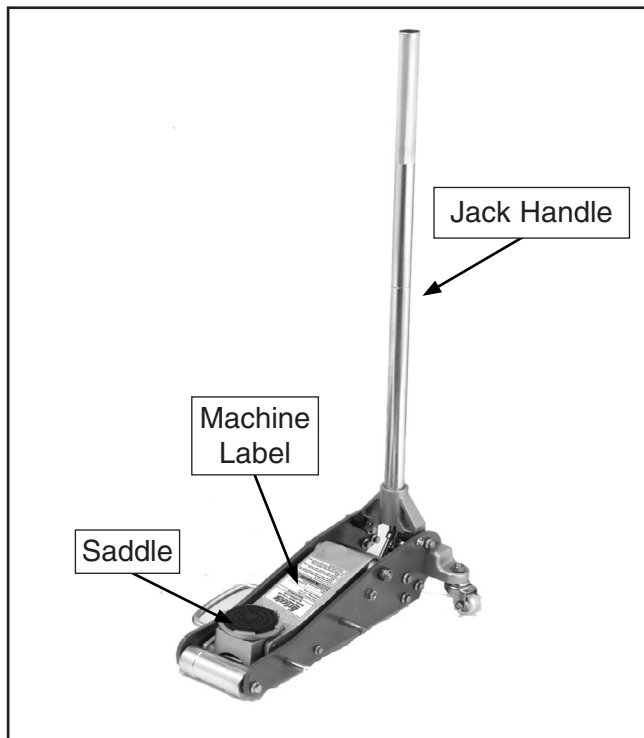


Figure 1. Model H8096 Identification.

## Operation

### To raise the saddle:

Turn the handle clockwise as far as it will turn and pump the handle up and down. Turning the handle clockwise will close the release valve.

### To lower the saddle:

Slowly turn the jack handle counterclockwise.

## **⚠**WARNING

Failure to follow these instructions could result in serious personal injury or death:

1. **DO NOT** overload this jack beyond its rated capacity. Overloading can cause the jack to collapse and drop the load.
2. **ALWAYS** support the vehicle with appropriately rated support stands before working under it.
3. **DO NOT** attempt to move the vehicle while the jack is in use.
4. Use only on hard level surfaces like concrete or asphalt. Other surfaces are potentially unstable.
5. Center the load on the jack to maintain proper balance and stability.
6. **DO NOT** use jack if it begins leaking fluid or if it sinks when placed under load. These are indications that the jack needs to be immediately serviced.

*If you need help with the Model H8096, call our Technical Support line at: (570) 546-9663.*

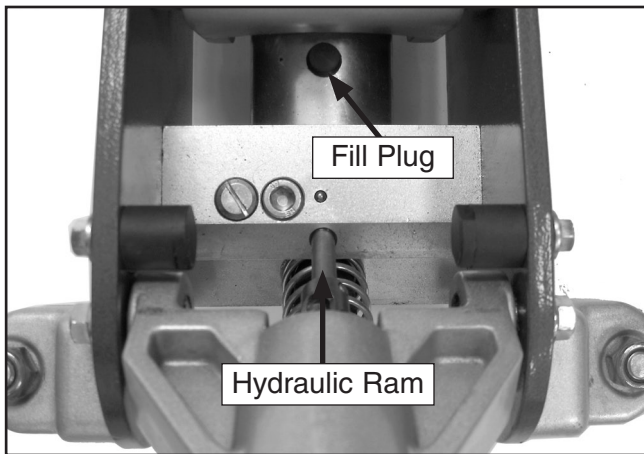
## Maintenance

Keep the hydraulic ram clean and free of any dust, dirt, or foreign debris. Abrasive material stuck to the ram can damage the hydraulic seal when the ram is retracted back into the jack. Regularly wipe the hydraulic ram clean with a lightly oiled rag.

The Model H8096 will require hydraulic fluid after long-term use. This will be noticeable if the jack will not reach its maximum height when pumped. Only use a high quality hydraulic fluid.

### To add hydraulic fluid:

1. Completely lower the jack saddle.
2. Remove the fill plug shown in **Figure 3**.



**Figure 3.** Fill plug.

3. Add fluid until it reaches the top of the fill plug hole.
4. Replace the fill plug.
5. Test the operation of the jack by pumping it up to the maximum height and applying a load to the saddle. The jack should hold the weight of the load without a sinking or spongy feeling.

—If the jack did not perform properly, then air may need to be bled from the pump system.

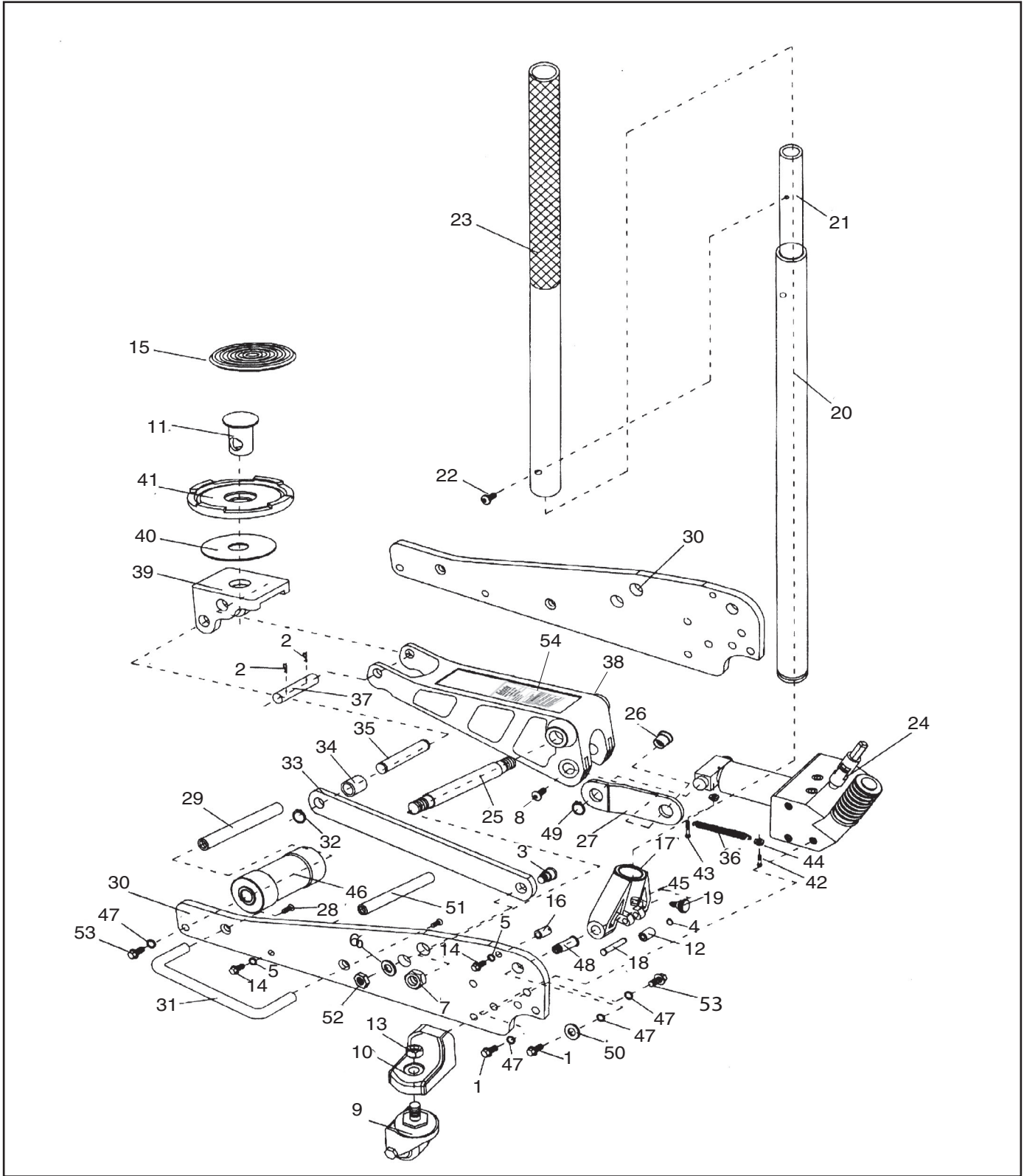
## Bleeding the Air

If the jack becomes spongy or will not rise when pumped, then air bubbles may be in the hydraulic system. These air bubbles must be bled from the hydraulic fluid before the jack can be safely operated.

### To remove the air bubbles:

1. Rotate the handle counterclockwise five full turns.
2. Place a shop rag around and under the oil fill hole.
3. Remove the fill plug.
4. Pump the jack handle rapidly to force the air bubbles out through the fill hole. When the air bubbles stop coming out, add fluid as needed, then put the fill plug back.

# H8096 Main Parts Breakdown



## **⚠ WARNING**

The machine label warns about hazards and ways to prevent injury. The owner of the jack **MUST** maintain the original location and readability of the label. If the label is removed or becomes unreadable, contact Grizzly at (800) 523-4777 or [www.grizzly.com](http://www.grizzly.com) to order a new label.

# H8096 Main Parts List

REF PART #	DESCRIPTION
1	PH8096001 FLANGE BOLT M10-1.5 X 25
2	PH8096002 HAIR PIN COTTER PIN
3	PH8096003 LINKAGE SCREW
4	PH8096004 SPECIAL RING
5	PH8096005 SPECIAL WASHER 8MM
6	PW01M FLAT WASHER 8MM
7	PLN09M LOCK NUT M12-1.75
8	PH8096008 BUTTON HD CAP SCR M10-1.5 X 16
9	PH8096009 REAR CASTER ASSY
10	PH8096010 REAR CASTER BRACKET
11	PH8096011 SADDLE AXIS
12	PH8096012 PISTON PRESS WHEEL
13	PLN09M LOCK NUT M12-1.75
14	PH8096014 FLANGE BOLT M8-1.25 X 20
15	PH8096015 RUBBER PAD
16	PH8096016 SCREW BUSHING
17	PH8096017 HANDLE SOCKET
18	PH8096018 PRESS WHEEL SHAFT
19	PH8096019 HANDLE BASE SCREW
20	PH8096020 LOWER HANDLE
21	PH8096021 JOINT CONNECTOR
22	PSBS18M BUTTON HD CAP SCR M6-1 X 18
23	PH8096023 UPPER HANDLE
24	PH8096024 PUMP ASSEMBLY
25	PH8096025 LIFT ARM AXIS
26	PH8096026 AXIS PIN
27	PH8096027 SHORT LINKAGE

REF PART #	DESCRIPTION
28	PH8096028 SPECIAL SCREW M6-1 X 20
29	PH8096029 FRONT WHEEL AXIS
30	PH8096030 FRAME
31	PH8096031 HANDLE BAR
32	PR47M EXT RETAINING RING 13MM
33	PH8096033 LONG LINKAGE
34	PH8096034 BUSHING
35	PH8096035 CONNECT ROD AXIS
36	PH8096036 SPRING
37	PH8096037 SADDLE BASE AXIS
38	PH8096038 LIFTING ARM
39	PH8096039 SADDLE BASE
40	PH8096040 NYLON WASHER
41	PH8096041 SADDLE
42	PH8096042 EYE BOLT M6-1 X 18
43	PH8096043 EYE BOLT M6-1 X 30
44	PN01M HEX NUT M6-1
45	PH8096045 SPRING PIN M3-.5 X 14
46	PH8096046 FRONT WHEEL
47	PH8096047 SPECIAL WASHER 10MM
48	PH8096048 SOCKET SHAFT
49	PR08M EXT RETAINING RING 19MM
50	PW04M FLAT WASHER 10MM
51	PH8096051 STRENGTHEN ROD
52	PN09M HEX NUT M12-1.75
53	PH8096053 FLANGE BOLT M10-1.5 X 20
54	PH8096054 MACHINE LABEL



# *grizzly.com*

**TOOL WEBSITE**

Buy Direct and Save with Grizzly® – Trusted, Proven and a Great Value!

*Visit Our Website Today And Discover  
Why Grizzly® Is The Industry Leader!*

- SECURE ORDERING
- ORDERS SHIPPED WITHIN 24 HOURS
- E-MAIL RESPONSE WITHIN ONE HOUR

-OR-

Call Today For A **FREE**  
Full Color Catalog

**1-800-523-4777**

